



Camelia Cottage Weaving Street, Weaving, Maidstone, Kent, ME14 5JR
Guide Price £725,000

**** GUIDE PRICE £725,000 - £750,000 **** A stunning modernised and spacious 4 bedroom, 2 bathroom chalet style detached house spanning over 1,800 sqft.

As you enter, you're welcomed by an inviting entrance hall leading to a beautiful kitchen with granite worktops, a light and airy sitting room with media wall and built-in storage, a study/snug, and an impressive orangery with lantern and bi-fold doors that open onto the secluded rear garden.

Upstairs, the property offers a spacious landing, 4 bedrooms, including the principal with beautiful en-suite, and a modern family bathroom with both shower and bath.

Externally, the property includes a garage with an office to the rear, and a large driveway with parking for 8+ vehicles to the front. The rear boasts a secluded rear garden with a large storage shed, patio and decked seating areas.

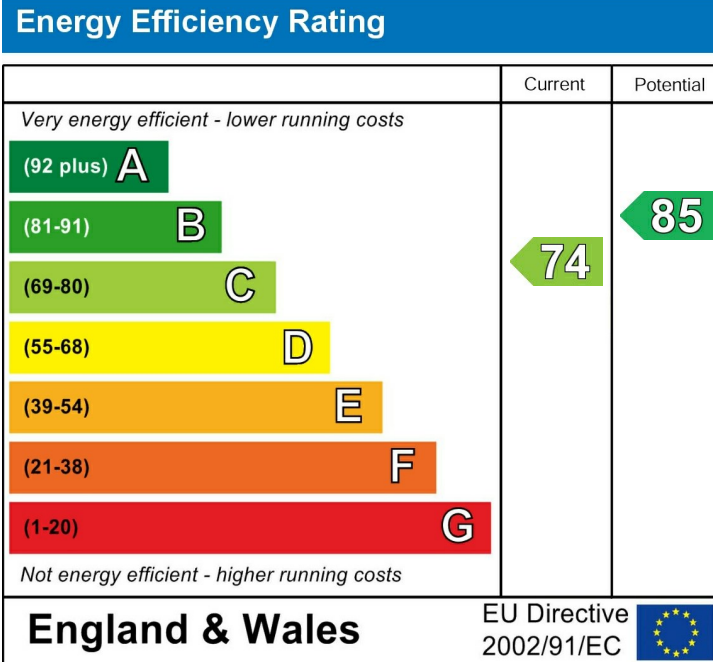
Situated on a popular road in Weaving, within close proximity of a large supermarket, reputable primary school and local pubs. The picturesque village centre of Bearsted is close by where there is an attractive Green, several shops, pubs, restaurants, parish church and mainline station serving London, Ashford International and the coast. The area is also well served by superb motorway links with the M2 & M20 close by. Tenure: Freehold. Council Tax Band: F. EPC Rating: C.



- Ground Floor
- Entrance Hall
- Sitting Room
- Study
- Kitchen/Breakfast Room
- Orangery
- Cloakroom
- First Floor
- Bedroom 1
- En-suite Shower Room
- Bedroom 2
- Bedroom 3
- Bedroom 4
- Bathroom
- Externally
- Garage/Store
- Office
- Rear Garden

Viewing

Strictly by arrangement with the Agent's Bearsted
Office: 132 Ashford Road, Bearsted, Maidstone, Kent
ME14 4LX. Tel: 01622 739574.



Page & Wells limited for themselves and for the vendors of this property whose agents they are give notice that: 1. These particulars do not constitute any part of, an offer or a contract. 2. All statements contained in these particulars as to this property are made without responsibility on the part of Page & Wells Limited or the Vendor. 3. None of the statements contained in these particulars as to the property is to be relied on as statements or representations of fact. 4. Any intending purchaser must satisfy himself by inspection or otherwise as to the correctness of each of the statements contained in these particulars. 5. The vendor does not make or give, and neither Page & Wells Limited nor any person in their employment has any authority to make or give any representation whatsoever in relation to this property. These particulars are supplied on the understanding that all negotiations are carried out throughout Page & Wells Limited. Properties with a reference prefixes EAA are those which Page & Wells Limited disclose an interest in accordance with the provisions of the Estates Agents Act 1979

Weaving Street Weaving, Maidstone

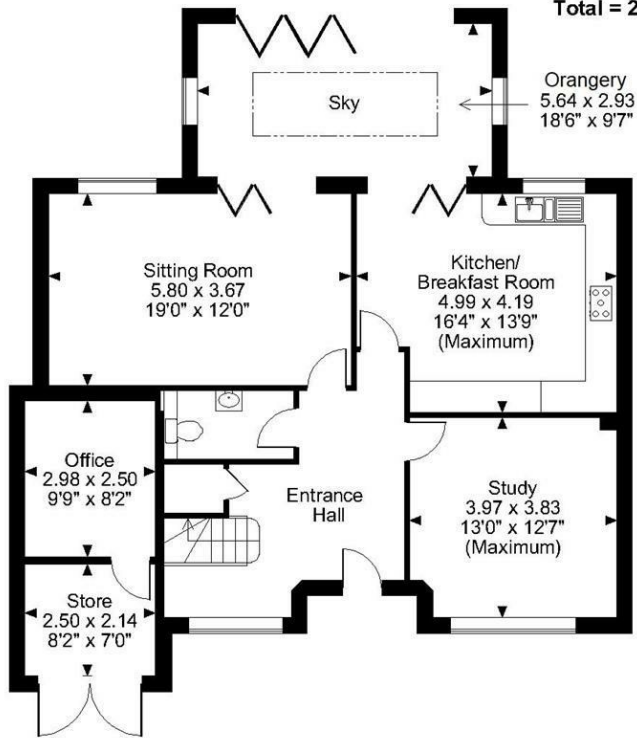
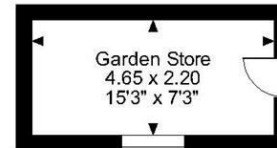
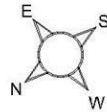
Approximate Gross Internal Area

Main House = 1837 Sq Ft/171 Sq M

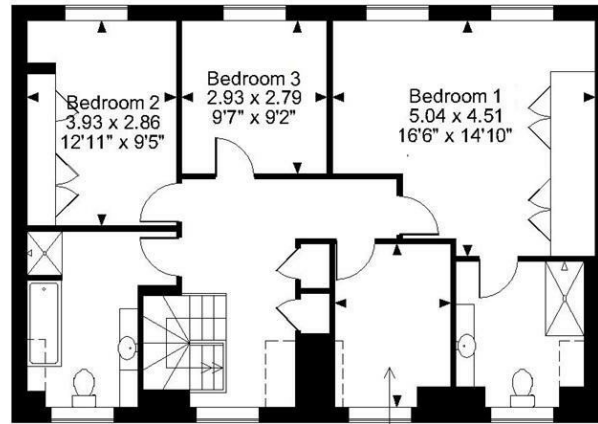
Office/Store = 142 Sq Ft/13 Sq M

Garden Store = 110 Sq Ft/10 Sq M

Total = 2089 Sq Ft/194 Sq M



Ground Floor



First Floor

FOR ILLUSTRATIVE PURPOSES ONLY - NOT TO SCALE

The position & size of doors, windows, appliances and other features are approximate only.

□ □ □ Denotes restricted head height

© ehouse. Unauthorised reproduction prohibited. Drawing ref. dig/8576097/LCO

