



Romney Fauchons Close, Bearsted, Maidstone, ME14 4BB
Guide Price £425,000



**** GUIDE PRICE: £425,000 - £450,000 ** NO FORWARD CHAIN ****

A beautifully presented 2 bedroom detached bungalow situated on the sought after Fauchons Close in Bearsted.

The property is approached via the driveway providing parking for up to 3 vehicles, past the well established and maintained front garden. Internally, the welcoming entrance hall leads to a cosy dual aspect sitting room, two double bedrooms, one of which opens up into the private rear garden, a modern shower room, and a fitted kitchen with conservatory style utility room to side, offering front and rear access.

Externally, you will find an attached garage with double doors to front and access from the side, a gate from the driveway leads you into the fabulous rear garden which is half paved and half lawned, which benefits from an insulated and glazed hobby room/office with power and light making it usable all year round, and a greenhouse.

Tenure: Freehold. EPC Rating: D. Council Tax Band: E.



LOCATION

The property is perfectly positioned to take full advantage of all local amenities within Bearsted, in particular the excellent transport links via mainline train station and access to the M2 & M20 motorways, together with its close proximity to the outstanding schools and just a 10 minute walk from the picturesque Village Green with a selection of fantastic pubs and restaurants. Leisure facilities include Bearsted golf, bowls and tennis clubs and nearby leisure centres, whilst the beautiful grounds of both Leeds Castle and Mote Park are also close by.

ACCOMMODATION

Entrance Hall

Sitting Room

Kitchen

Utility Room

Bedroom One

Bedroom Two

Shower Room

EXTERNALLY

Front Garden

Garage

Driveway

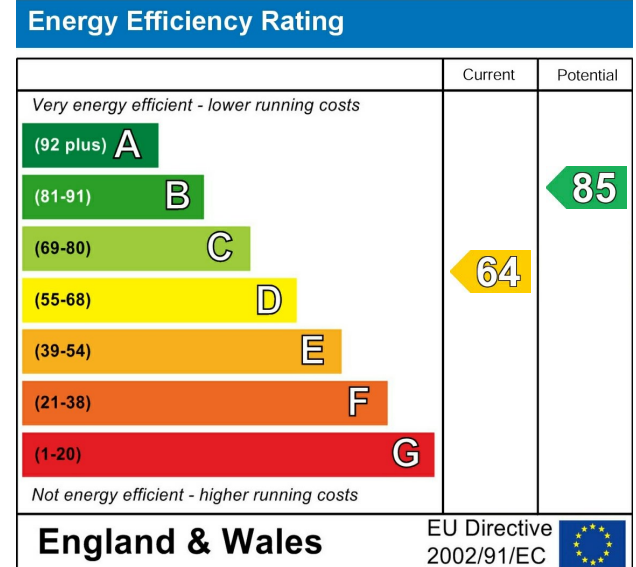
Rear Garden

Office/Hobby Room

Greenhouse

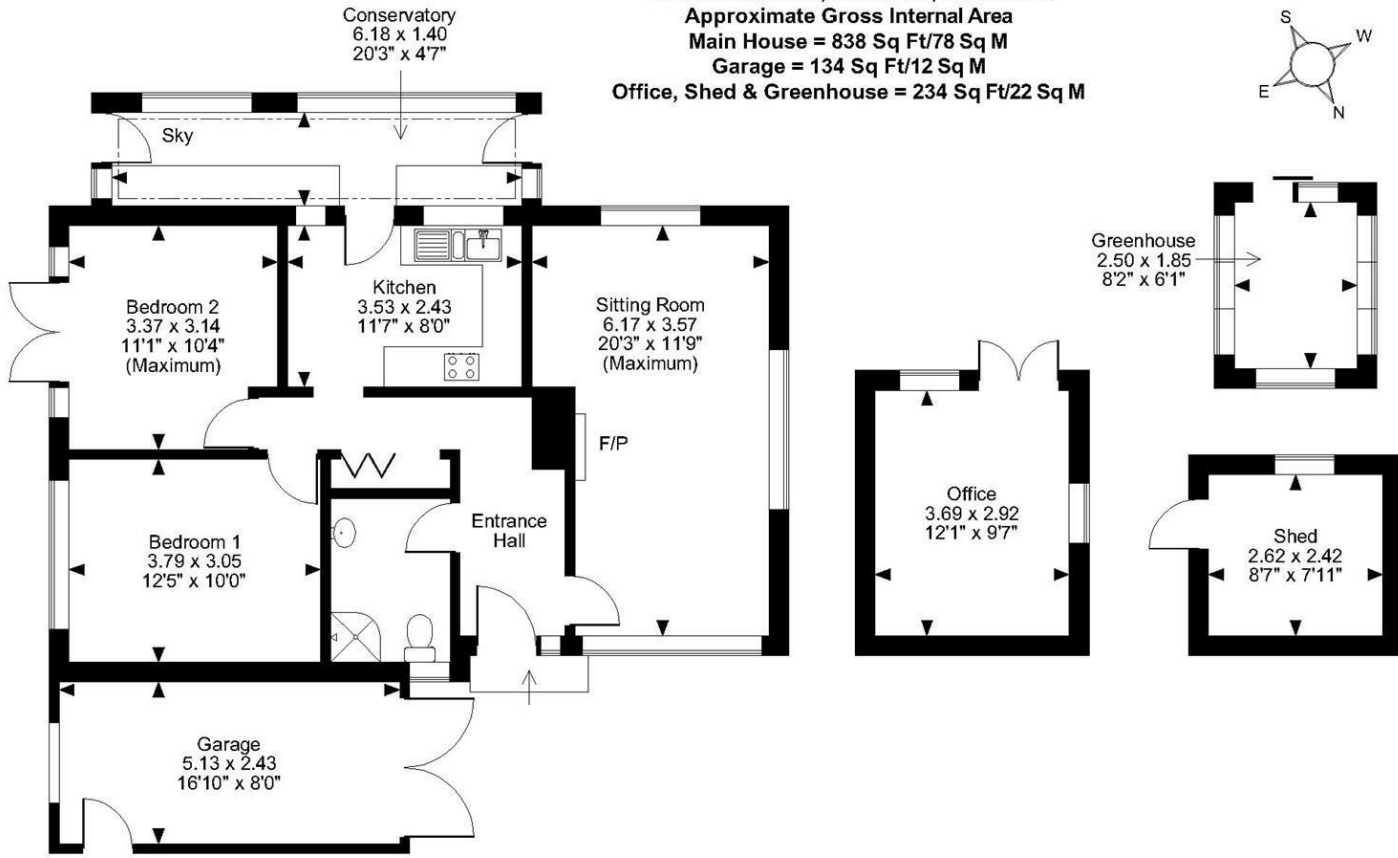
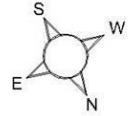
VIEWING

Strictly by arrangement with the Agent's Bearsted Office: 132 Ashford Road, Bearsted, Maidstone, Kent ME14 4LX. Tel: 01622 739574.



Page & Wells limited for themselves and for the vendors of this property whose agents they are give notice that: 1. These particulars do not constitute any part of, an offer or a contract. 2. All statements contained in these particulars as to this property are made without responsibility on the part of Page & Wells Limited or the Vendor. 3. None of the statements contained in these particulars as to the property is to be relied on as statements or representations of fact. 4. Any intending purchaser must satisfy himself by inspection or otherwise as to the correctness of each of the statements contained in these particulars. 5. The vendor does not make or give, and neither Page & Wells Limited nor any person in their employment has any authority to make or give any representation whatsoever in relation to this property. These particulars are supplied on the understanding that all negotiations are carried out throughout Page & Wells Limited. Properties with a reference prefixes EAA are those which Page & Wells Limited disclose an interest in accordance with the provisions of the Estates Agents Act 1979

Fauchons Close, Bearsted, Maidstone
Approximate Gross Internal Area
Main House = 838 Sq Ft/78 Sq M
Garage = 134 Sq Ft/12 Sq M
Office, Shed & Greenhouse = 234 Sq Ft/22 Sq M



Ground Floor

FOR ILLUSTRATIVE PURPOSES ONLY - NOT TO SCALE
 The position & size of doors, windows, appliances and other features are approximate only.
 © ehouse. Unauthorised reproduction prohibited. Drawing ref. dig/8557843/LCO

