



22 Cornflower Close, Weaving, Maidstone, ME14 5UL
Price £580,000



A fabulous 4 bedroom detached Longfield style house set back from the road with impressive front garden boasting an in and out driveway, garage and rare secluded rear garden in the desirable Cornflower Close within Weaving.

Internally, the entrance porch and hallway lead to a generous sized sitting room, separate dining room and kitchen with large attached breakfast room which opens out to the garden, whilst there is a cloakroom for convenience completing the ground floor. Upstairs, the principal bedroom benefits from a modern en-suite shower room whilst the remaining 3 bedrooms share the modern family bathroom. Outside, you will find a good sized secluded rear garden, mainly laid to lawn with paved seating area which benefits from rear access into the garage and a side gate.

Weaving is situated directly opposite Mote Park offering 440 acres of parkland and close to the picturesque village centre of Bearsted, where there is an attractive Green, several shops, pubs, restaurants, parish church and mainline station serving London, Ashford International and the coast. The area is also well served by superb motorway links with the M2 & M20 close by, renowned infant and junior schools and leisure clubs. Council Tax Band: F. EPC Rating: D. Tenure: Freehold.



GROUND FLOOR:

- Entrance Hall
- Sitting Room
- Dining Room
- Kitchen
- Conservatory/Breakfast Room

FIRST FLOOR:

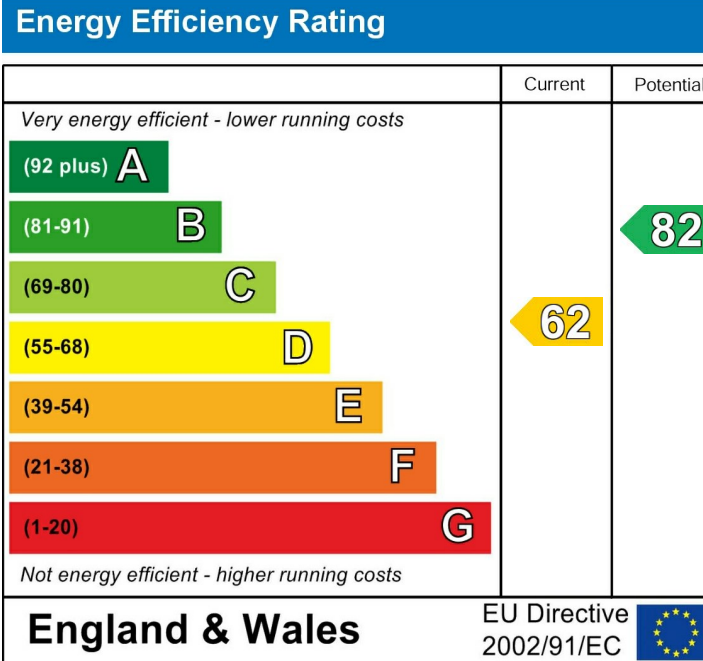
- Principal Bedroom
- Shower Room En-suite
- Bedroom 2
- Bedroom 3
- Bedroom 4
- Family Bathroom

EXTERNALLY:

- Gardens
- Garage
- Driveway

VIEWING:

Strictly by arrangement with the Agent's Bearsted Office, 132 Ashford Road, Bearsted, Maidstone, Kent ME14 4LX. Tel: 01622 739574.



Page & Wells limited for themselves and for the vendors of this property whose agents they are give notice that: 1. These particulars do not constitute any part of, an offer or a contract. 2. All statements contained in these particulars as to this property are made without responsibility on the part of Page & Wells Limited or the Vendor. 3. None of the statements contained in these particulars as to the property is to be relied on as statements or representations of fact. 4. Any intending purchaser must satisfy himself by inspection or otherwise as to the correctness of each of the statements contained in these particulars. 5. The vendor does not make or give, and neither Page & Wells Limited nor any person in their employment has any authority to make or give any representation whatsoever in relation to this property. These particulars are supplied on the understanding that all negotiations are carried out throughout Page & Wells Limited. Properties with a reference prefixes EAA are those which Page & Wells Limited disclose an interest in accordance with the provisions of the Estates Agents Act 1979

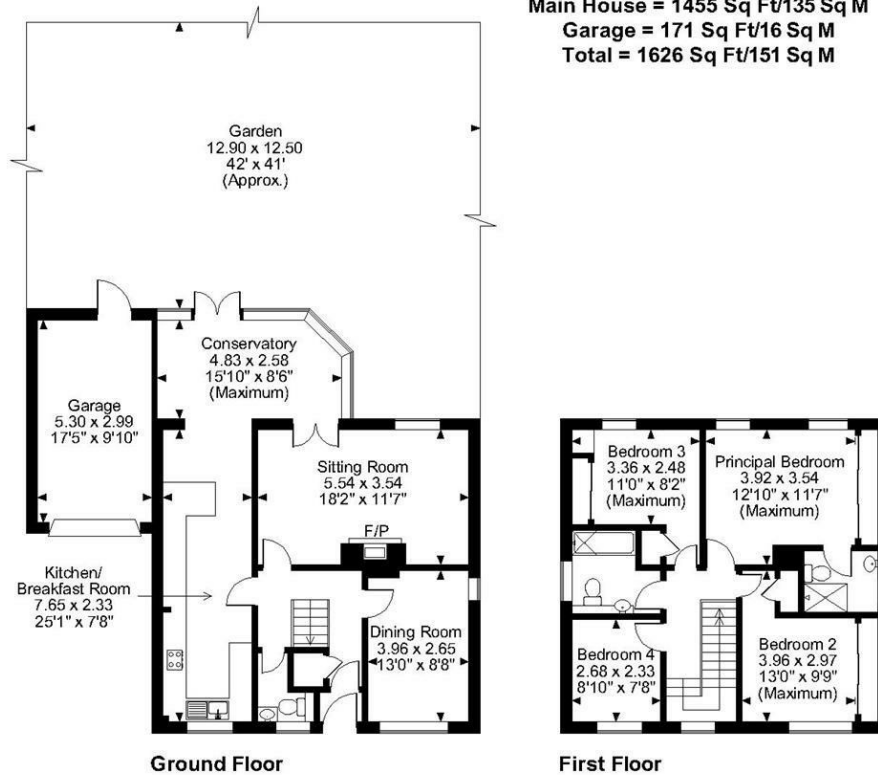
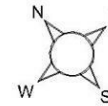
Cornflower Close, Weaving, Maidstone

Approximate Gross Internal Area

Main House = 1455 Sq Ft/135 Sq M

Garage = 171 Sq Ft/16 Sq M

Total = 1626 Sq Ft/151 Sq M



FOR ILLUSTRATIVE PURPOSES ONLY - NOT TO SCALE

The position & size of doors, windows, appliances and other features are approximate only.

© ehouse. Unauthorised reproduction prohibited. Drawing ref. dig/8555322/TOW

