



9 Orchard View, Detling, Maidstone, Kent, ME14 3NR
Guide Price £525,000



**** GUIDE PRICE £525,000 - £550,000 ** VIEWS OF THE NORTH DOWNS **** This stunning 4 bedroom detached house is nestled in the idyllic location of Orchard View, Detling. Boasting fabulous views of the North Downs, this property offers over 1,200sqft of internal accommodation (excluding the garage) and, on the ground floor, you will find a well-presented kitchen, a spacious lounge and dining room, a utility room, a cloakroom and an integral garage. The first floor comprises 4 bedrooms with the generous sized principal featuring a large contemporary en-suite shower room, a second double and 2 further bedrooms, as well as a high-spec modernised family bathroom. The rear garden is predominantly laid to lawn with paved path and seating area, as well as established flower borders. In addition, the property offers off-road parking for two vehicles.

The area surrounding the property is known for its fantastic schools and its close proximity to popular destinations such as the North Downs, Horish Wood, Pilgrims Way and Thurnham Castle; perfect for nature lovers. Situated in a quiet cul-de-sac, the property also boasts views of the neighbouring farmland. Bearsted mainline station is conveniently located just one mile away, offering an easy commute into London and Ashford International, whilst the M2 & M20 motorways are conveniently close. Detling Village offers a variety of amenities including a shop, playground, pub, church, village hall, woods and a cricket ground. EPC Rating: C. Council Tax Band: F.



GROUND FLOOR:

Sitting Room

Dining Room

Kitchen/Breakfast Room

Utility Room

Cloakroom

FIRST FLOOR:

Principal Bedroom

Shower Room En-suite

Bedroom 2

Bedroom 3

Bedroom 4

Family Bathroom

EXTERNALLY:

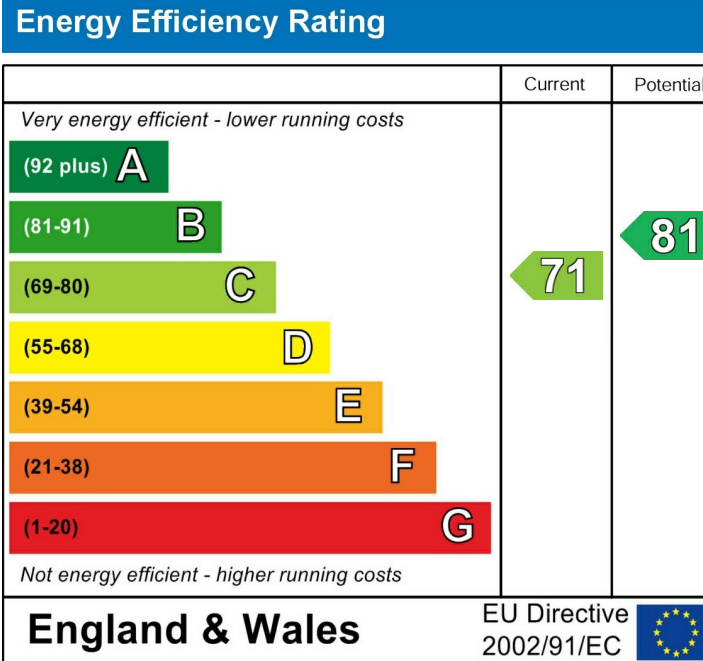
Integral Garage

Driveway

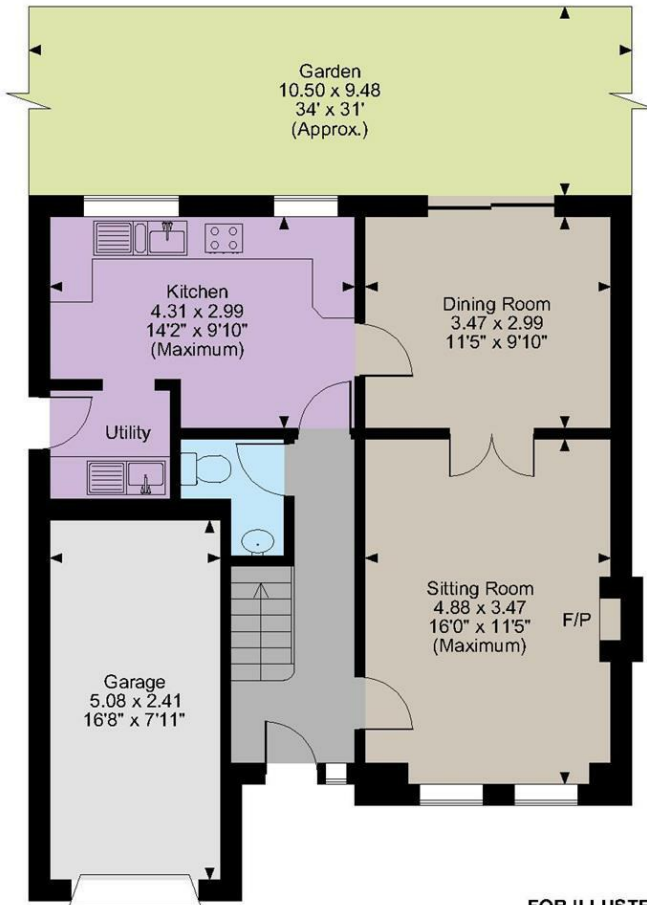
Gardens

VIEWING:

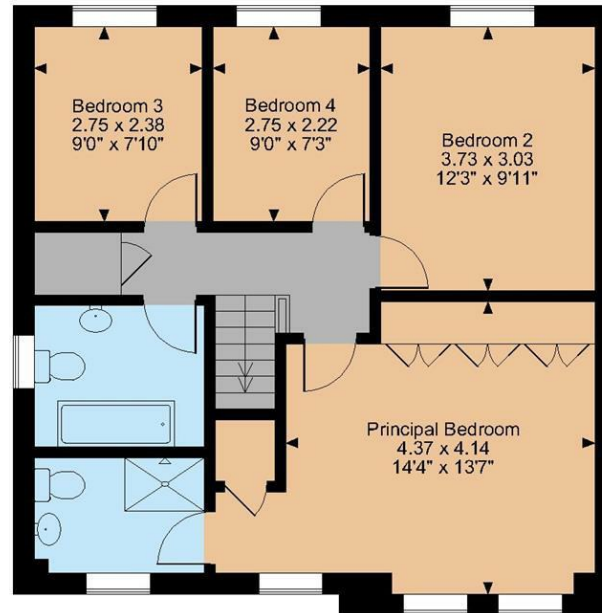
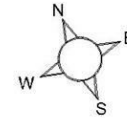
Strictly by arrangement with the Agent's Bearsted Office, 132 Ashford Road, Bearsted, Maidstone, Kent ME14 4LX . Tel: 01622 739574.



Page & Wells limited for themselves and for the vendors of this property whose agents they are give notice that: 1. These particulars do not constitute any part of, an offer or a contract. 2. All statements contained in these particulars as to this property are made without responsibility on the part of Page & Wells Limited or the Vendor. 3. None of the statements contained in these particulars as to the property is to be relied on as statements or representations of fact. 4. Any intending purchaser must satisfy himself by inspection or otherwise as to the correctness of each of the statements contained in these particulars. 5. The vendor does not make or give, and neither Page & Wells Limited nor any person in their employment has any authority to make or give any representation whatsoever in relation to this property. These particulars are supplied on the understanding that all negotiations are carried out throughout Page & Wells Limited. Properties with a reference prefixes EAA are those which Page & Wells Limited disclose an interest in accordance with the provisions of the Estates Agents Act 1979



Orchard View, Detling, Maidstone, Kent
Main House internal area 1,227 sq ft (114 sq m)
Garage internal area 132 sq ft (12 sq m)
Total internal area 1,359 sq ft (126 sq m)



First Floor

FOR ILLUSTRATIVE PURPOSES ONLY - NOT TO SCALE
 The position & size of doors, windows, appliances and other features are approximate only.
 © ehouse. Unauthorised reproduction prohibited. Drawing ref. dig/8555412/TOW

