



Coppins Ashford Road, Weaving, Maidstone, ME14 4AG
Price £680,000



**** c2,200 SQFT OF INTERNAL ACCOMMODATION **** A fabulous 5 bedroom detached house set well back from the Ashford Road, within a generous plot of over a quarter of an acre. The size of the property has to be seen to be appreciated.

The property is approached by entrance gates leading up the driveway which provides ample parking for 6+ vehicles, through the established gardens to the front door. Upon entering, you are greeted by a large bright double height entrance hall with oak staircase and flooring. There is a modern kitchen/breakfast room with dining area, two good sized reception rooms, three bedrooms, one of which has a dressing room and en-suite shower room, a cellar and utility/wc, all on the ground floor. Upstairs, there is a large landing with study/reading area, the main bedroom complete with dressing room and recently fitted en-suite shower room, the 3rd largest bedroom and a separate shower room.

Externally, there is a secluded rear garden with large tiered decked area to side, perfect for hosting barbeques and family gatherings, as well as an insulated summerhouse with power and light. To the front, there is a semi-converted detached garage at the bottom of the driveway and large mature garden with an abundance of wildlife.

Situated in the much sought after area of Weaving, directly opposite Mote Park offering 440 acres of parkland and close to the picturesque village centre of Bearsted, where there is an attractive Green, several shops, pubs, restaurants, parish church and mainline station serving London, Ashford International and the coast. The area is also well served by excellent infant and primary schools in St. Johns, Thurnham & Roseacre and is within the catchment area of reputable grammar schools and SST secondary school. Council Tax Band: G.



GROUND FLOOR:

Entrance Hall

Reception Room

Reception Room

Kitchen/Breakfast Room

Dining Room

Cloakroom

Bedroom

En-suite Dressing Room

En-suite Shower Room

Bedroom

Bedroom

Cellar

FIRST FLOOR:

Landing/Study Area

Shower Room

Bedroom

En-suite Dressing Room

En-suite Shower Room

Bedroom

EXTERNALLY:

Garage

Driveway

Rear Garden

Summerhouse

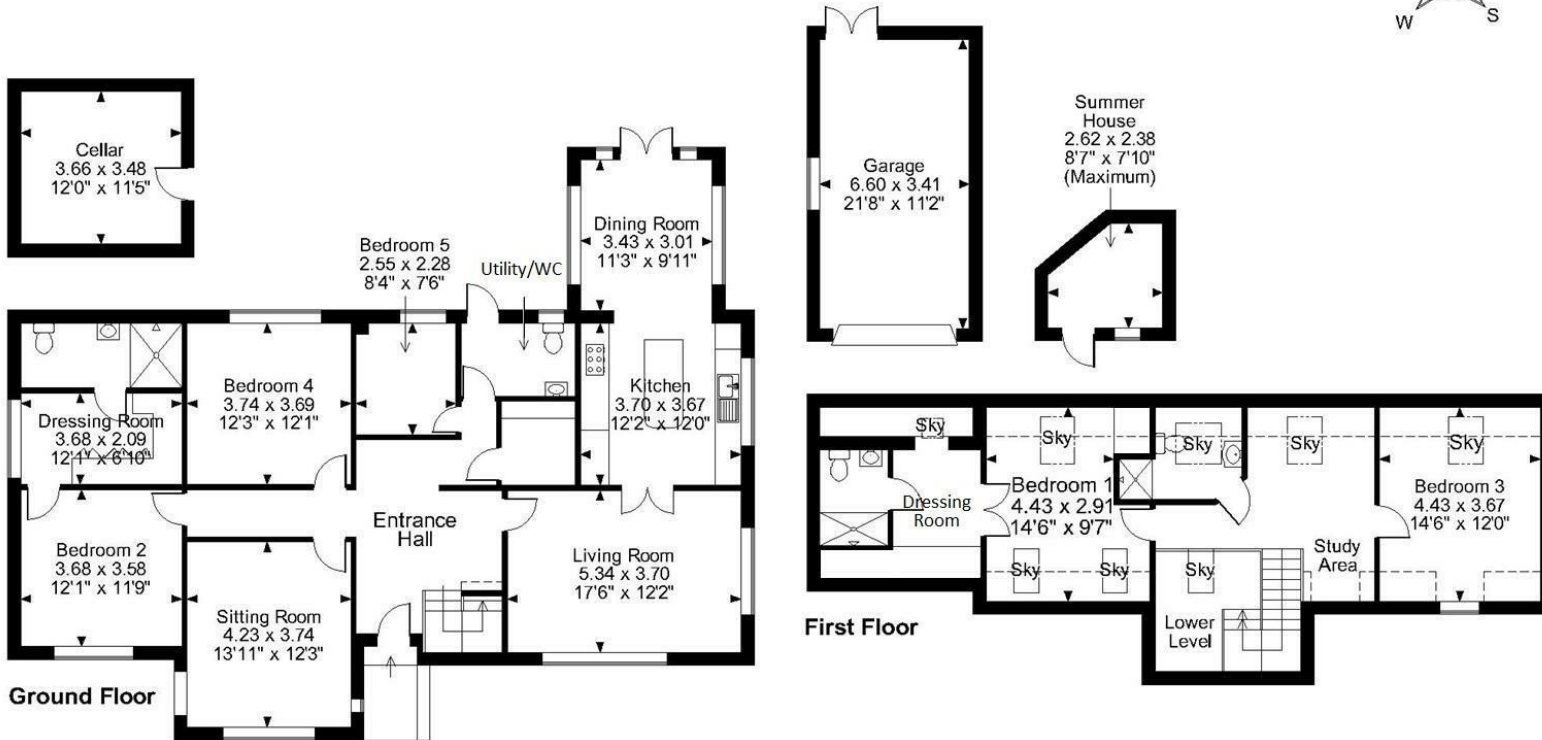
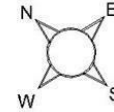
VIEWING:

Strictly by arrangement with the Agent's Bearsted Office, 132 Ashford Road, Bearsted, Maidstone, Kent ME14 4LX. Tel: 01622 739574.





Ashford Road Weaving, Maidstone
Approximate Gross Internal Area
Main House = 2190 Sq Ft/203 Sq M
Garage = 242 Sq Ft/23 Sq M
Summer House = 58 Sq Ft/5 Sq M



FOR ILLUSTRATIVE PURPOSES ONLY - NOT TO SCALE
 The position & size of doors, windows, appliances and other features are approximate only.
 □ □ □ □ Denotes restricted head height
 © ehouse. Unauthorised reproduction prohibited. Drawing ref. dig/8555092/LCO

Energy Efficiency Rating		Current	Potential
Very energy efficient - lower running costs			
(92 plus) A			
(81-91) B			
(69-80) C			77
(55-68) D		60	
(39-54) E			
(21-38) F			
(1-20) G			
Not energy efficient - higher running costs			
England & Wales		EU Directive 2002/91/EC	

Page & Wells limited for themselves and for the vendors of this property whose agents they are give notice that: 1. These particulars do not constitute any part of, an offer or a contract. 2. All statements contained in these particulars as to this property are made without responsibility on the part of Page & Wells Limited or the Vendor. 3. None of the statements contained in these particulars as to the property is to be relied on as statements or representations of fact. 4. Any intending purchaser must satisfy himself by inspection or otherwise as to the correctness of each of the statements contained in these particulars. 5. The vendor does not make or give, and neither Page & Wells Limited nor any person in their employment has any authority to make or give any representation whatsoever in relation to this property. These particulars are supplied on the understanding that all negotiations are carried out throughout Page & Wells Limited. Properties with a reference prefixes EAA are those which Page & Wells Limited disclose an interest in accordance with the provisions of the Estates Agents Act 1979

