

# LATE ENTRY: AUCTION SALE

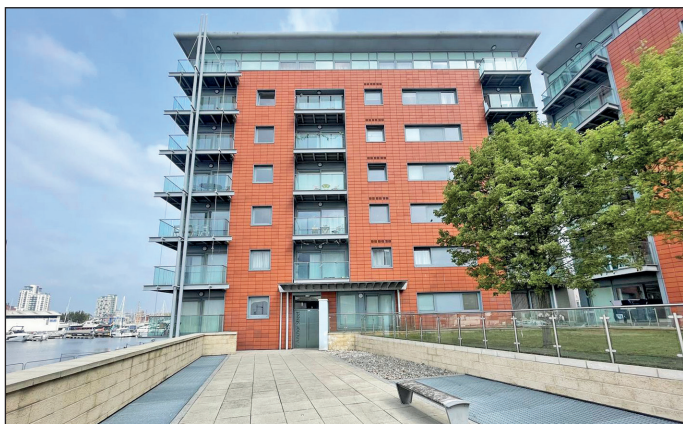
## Tuesday 24th June 2025



Lot 176A

Apartment 503, 7 Anchor Street,  
Ipswich, Suffolk, IP3 0BW

Upon  
instruction of  Countrywide



All enquiries Ref: Emma Hughes



### ■ Leasehold fifth floor flat

#### Location:

The property is located on Anchor Street. Shopping amenities can be found locally within Ipswich Town Centre. Public transport links are available at Derby Road Train Station to the east and Ipswich Train Station to the west along with a network of local bus services serving the surrounding areas. The property is served by road links including the A1156 to the north and A137 to the west. Recreational pursuits can be found at Holywells Park to the east and Alexandra Park to the north east.

#### Accommodation:

Principal bedroom with ensuite, one further bedroom, reception room, kitchen, bathroom/wc  
Outside: Balcony and allocated parking space

**EPC Rating:** B

**Council Tax Band:** C

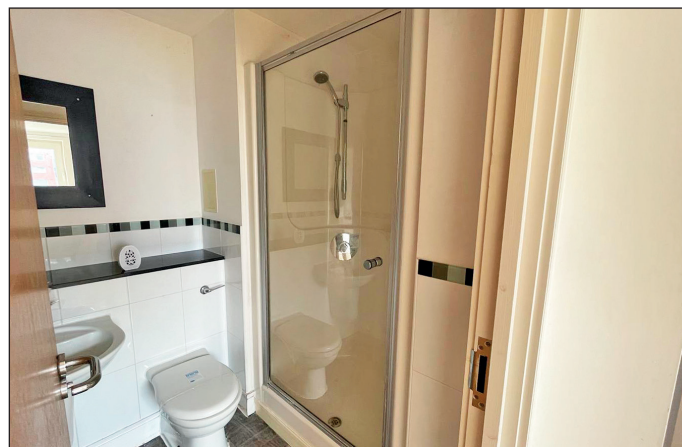
#### Lease:

Held on a lease for a term of 125 years from 01/06/2003.



#### To view:

Strictly by arrangement with the auctioneers.



Telephone: 0208 741 8088 • Email: [Emma.hughes@barnardmarcus.co.uk](mailto:Emma.hughes@barnardmarcus.co.uk)