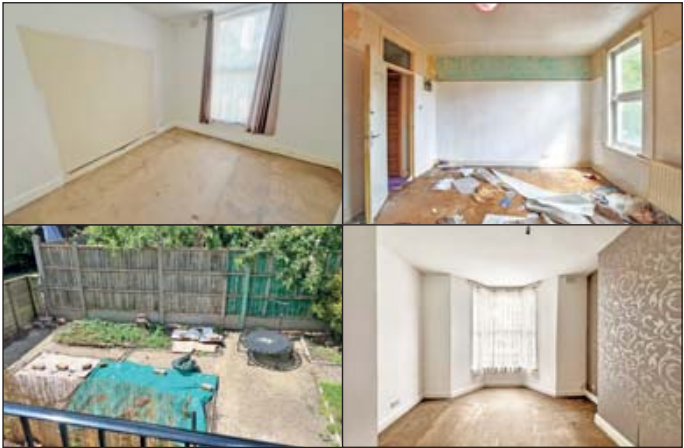




- Freehold building arranged as three self-contained flats requiring updating
- Further potential to extend
- Full vacant possession

Location:

The property is situated on Median Road which is located off Urswick Road (A107) with Homerton University Hospital conveniently located to the south east. Public transport links are well provided with Hackney Downs, Hackney Central and Homerton Railway Station lying in close proximity together with a network of local bus services serving the surrounding vicinity. Road links are accessible with the A10 to the west and A12 lying to the east. Shopping amenities can be found locally along Urswick Road and Homerton High Street with a further range shops, bars and restaurants located at Westfield Shopping Centre in Stratford to the south east. Recreational pursuits include Hackney Marshes to the east and Millfields Park to the north.



Accommodation:

Flat / Floor	Accommodation/Size	EPC	CTB
Flat C - First floor flat	Approx. 47m <sup>2</sup> / 504sq ft Entrance hall, one bedroom, reception, kitchen, bathroom/WC	TBA	B
Flat B - Raised ground floor flat	Approx. 41m <sup>2</sup> / 436sq ft Entrance hall, one bedroom, reception, kitchen, bathroom/WC Outside: Rear access to garden (section)	C	B
Flat A - Lower ground floor garden flat	Entrance hall, one bedroom, reception, kitchen, bathroom/WC Outside: Rear garden (section)	D	B

Tenure:

Freehold

To view:

Strictly by arrangement with the auctioneer. Please see important advice for viewers on page 19 of this catalogue.

