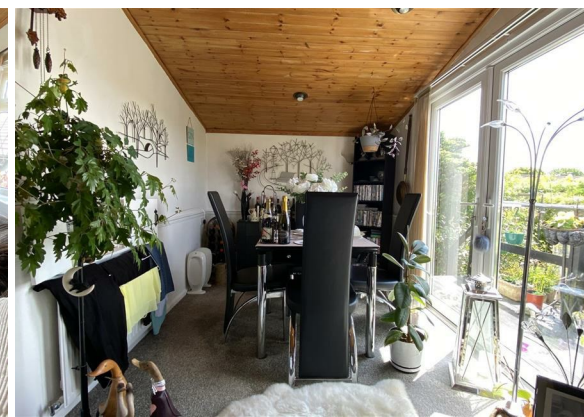




Congdons Shop
Launceston
PL15 7PW

Asking Price £198,000

- Two Bedroom Detached Park Home
- Lounge/Diner With Doors To Garden
- Kitchen
- Utility Room
- Shower Room & En-Suite Bathroom
- Gardens
- Parking & Garage
- Over 55s, Fully Residential Park



Tenure - Leasehold

Council Tax Band - A

Floor Area - 829.00 sq ft



Nestled in the heart of this popular park, you'll find a spacious two bedroom, master with en-suite bathroom fully residential detached park home. It offers roomy accommodation with LPG gas central heating and double glazing. The spacious garden provides desirable countryside views, decking and a greenhouse. Driveway parking for several vehicles, and a garage. This home is reserved for individuals over 55. EPC exemption in place.

The park is well located for exploring the Cornish countryside. The nearest village a mile away is Lewannick, offering local amenities including a post office, shop, pub and church. The nearest town, 8 miles away is Launceston. Plymouth and Exeter are 20 miles away, where you can find city amenities including shops and restaurants.

Age restriction: Over 55's
Pet friendly: Yes

LOUNGE:

17'6 x 9'6 (5.33m x 2.90m)
Window to front. Vaulted ceiling. Steps up to

DINER:

9'6 x 7'10 (2.90m x 2.39m)
Double opening doors to veranda. Serving hatch to Kitchen.

KITCHEN:

11'10 x 9'6 (3.61m x 2.90m)
Window to side garden. Fitted base units under roll edge work surfaces, sink unit. Eye level electric oven. Four ring hob. Matching wall mounted cupboards.

UTILITY:

Door to side. Space and plumbing for washing machine. Boiler.

PRINCIPAL BEDROOM:

11'8 x 9'6 (3.56m x 2.90m)
Window to front. Built in wardrobe. Door to

EN-SUITE:

6'8 x 5'6 (2.03m x 1.68m)
Window to front. Corner jacuzzi bath. Pedestal wash hand basin. Low level WC

BEDROOM TWO:

10'8 x 9'6 (3.25m x 2.90m)
Window to side. Built in bedroom furniture.

SHOWER ROOM:

Window to side. Corner shower cubicle. Wash hand basin. Low level WC.

OUTSIDE:

Gardens to the front, side and rear with countryside views. Greenhouse. Raised Veranda.

To the front is parking for several vehicles which lead to the garage.



