

# Castles

ASKING PRICE

£260,000

Egret Court, Teal Close

Enfield, EN3 5TL Leasehold



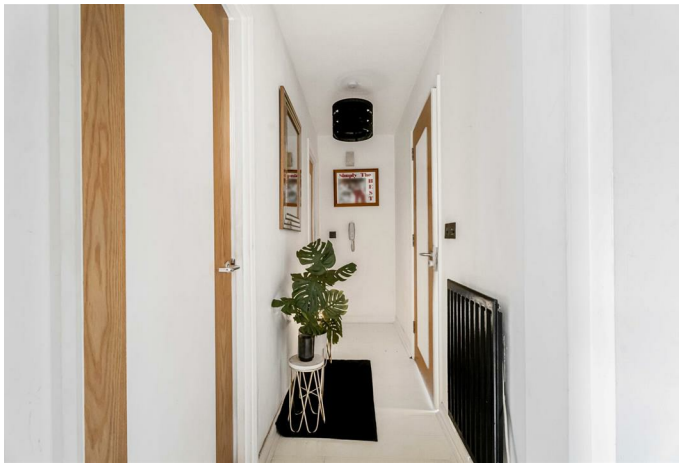
## PROPERTY SUMMARY

A 2 double bedroom 2nd floor modern purpose built flat located off Turkey Street next to Turkey Street train station (serving London Liverpool Street) and close to Great Cambridge Road and local shops. The property offers spacious accommodation and balcony overlooking a local park. Viewing is highly recommended.

Key Features include:-

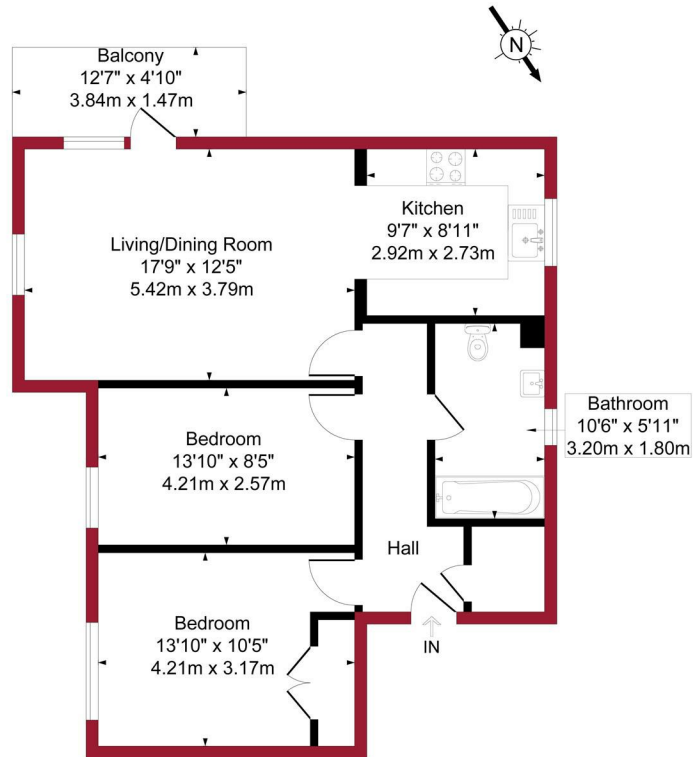
Double glazing and Gas central heating,  
Fitted kitchen,  
Allocated parking space,  
Security entryphone system.





Egret Court, Teal Close, Enfield, EN3

Approximate Gross Internal Area = 748 sq ft / 69.4 sq m



For a guide to the area please scan this code for more information



Flat Leasehold

**Council:** Enfield

**Council Tax Band:** C

**Lease Remaining:** 99 years from 29 September 2005.

73 years remaining

**Service Charge:** £2,020.20 P/A

**Ground Rent:** n/a

Agents Note: Whilst every care has been taken to prepare these particulars, they are for guidance purposes only. All measurements are approximate and are for general guidance purposes only and whilst every care has been taken to ensure their accuracy, they should not be relied upon and potential buyers/tenants are advised to recheck the measurements



#### OFFICE ADDRESS

243 - 245 Hertford Road  
Enfield  
London  
EN3 5JJ

#### OFFICE DETAILS

0208 804 8000  
enfield@castles.london  
<https://www.castles.london>

