

The logo for 'Castles' is written in a stylized, red, gothic-style font. It is positioned in the upper right corner of the image, partially overlapping the sky and the roofline of the building.

Castles

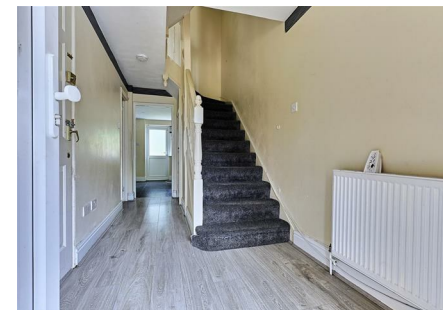
ASKING PRICE

£485,000

Harston Drive

Enfield, EN3 6GJ



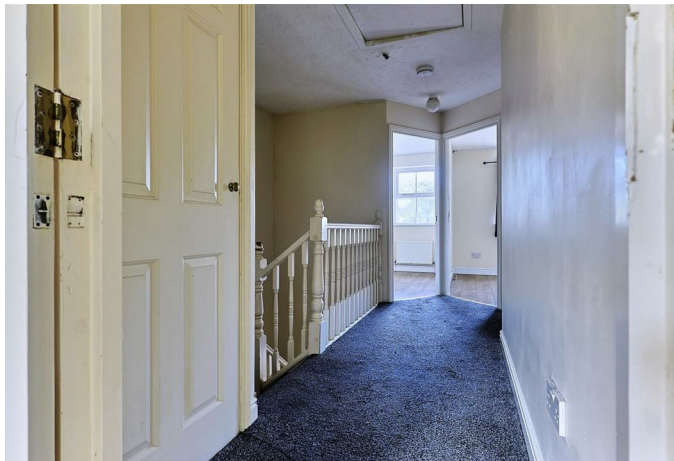


PROPERTY SUMMARY

A spacious five bedroom Town House located in the Enfield Island Village, offering a rare opportunity for families or investors alike. Set in a peaceful riverside setting, the property is just 0.5 miles from Enfield Lock BR Station, providing direct links to Tottenham Hale (Victoria Line) and London Liverpool Street. The home features a generous kitchen/diner, a lounge, ground floor WC, two family bathrooms, an ensuite to the master bedroom, gas central heating, off-street parking, an integral garage, and a pleasant low maintenance rear garden. While the property offers excellent space and potential, it does require modernisation - making it ideal for those looking to add value and personalise their living space. All services /appliances have not and will not be tested.

*We understand there is an annual rent charge of £300.00 per year.





APPROXIMATE GROSS INTERNAL AREA
125.97 sqm / 1355.93 sqft (Excluding Garage)
140.14 sqm / 1508.45 sqft (Including Garage)

A guide to the area

AREA GUIDE TEXT



THIS PLAN IS FOR ILLUSTRATION ONLY AND MAY NOT BE
REPRESENTATIVE OF THE PROPERTY



House

Freehold

Council:

Council Tax Band: E

Lease Remaining: n/a

Service Charge: n/a

Ground Rent: n/a

Agents Note: Whilst every care has been taken to prepare these particulars, they are for guidance purposes only. All measurements are approximate and are for general guidance purposes only and whilst every care has been taken to ensure their accuracy, they should not be relied upon and potential buyers/tenants are advised to recheck the measurements



OFFICE ADDRESS

243 - 245 Hertford Road
Enfield
London
EN3 5JJ

OFFICE DETAILS

0208 804 8000
enfield@castles.london
<https://www.castles.london>

