

Castles

ASKING PRICE

£525,000

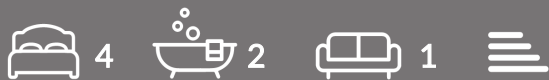
George Lovell Drive

Enfield, EN3 6WE



PROPERTY SUMMARY

A well presented End of Terraced four bedroom Townhouse located on the popular Enfield Island Village within approx 1m of Enfield Lock Train Station (Serving London Liverpool Street Station) and close to local shops and schools. The property is offered for sale in good decorative order and viewing is highly recommended. Features include 4 double bedrooms, main bedroom with ensuite, open plan ground floor living room, 1st floor family bathroom, rear garden, balcony, garage to rear, gas central heating and double glazing.

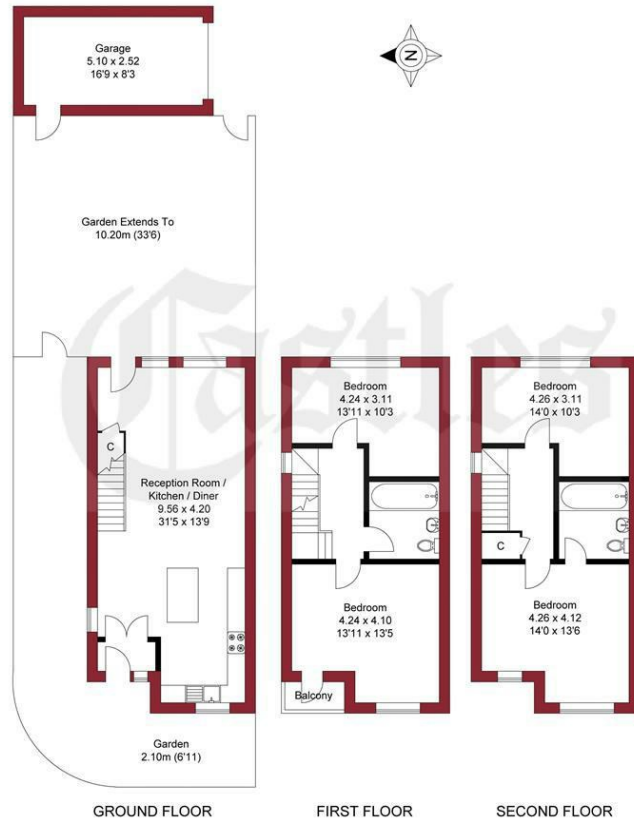




APPROXIMATE GROSS INTERNAL AREA
115.60 sqm / 1244.30 sqft (Excluding Garage)
128.45 sqm / 1382.62 sqft (Including Garage)

A guide to the area

AREA GUIDE TEXT



THIS PLAN IS FOR ILLUSTRATION ONLY AND MAY NOT BE
REPRESENTATIVE OF THE PROPERTY



House - End Terrace

Freehold

Council:

Council Tax Band: E

Lease Remaining: n/a

Service Charge: n/a

Ground Rent: n/a

Agents Note: Whilst every care has been taken to prepare these particulars, they are for guidance purposes only. All measurements are approximate and are for general guidance purposes only and whilst every care has been taken to ensure their accuracy, they should not be relied upon and potential buyers/tenants are advised to recheck the measurements



OFFICE ADDRESS

243 - 245 Hertford Road
Enfield
London
EN3 5JJ

OFFICE DETAILS

0208 804 8000
enfield@castles.london
<https://www.castles.london>

Energy Efficiency Rating		Current	Potential
Very energy efficient - lower running costs			
A	(12-14)		
B	(15-17)		
C	(18-20)		
D	(21-23)		
E	(24-26)		
F	(27-29)		
G	(30-35)		
Not energy efficient - higher running costs			
EU Directive 2002/91/EC			
England & Wales			