

# Castles

GUIDE PRICE

**£720,000**

**Lonsdale Drive,**

Enfield, EN2 7NB





## PROPERTY SUMMARY

GUIDE PRICE £700,000 to £ 720,000

A fantastic opportunity to purchase an extended 3 double bedroom semi-detached family house located on a highly desirable residential location within 0.3m of Oakwood underground station (Piccadilly line) and in the catchment area of some of the areas most sought after schools (including Eversley, Merryhills and Highlands). The property offers potential to the incoming buyers to update and personalise the property and has excellent features to include:- front off street parking, garage to side, spacious living room, extended kitchen/dining area, 3 double bedrooms, spacious first floor bathroom, separate WC, large rear garden, modernisation required, chain free sale. Viewing highly recommended.





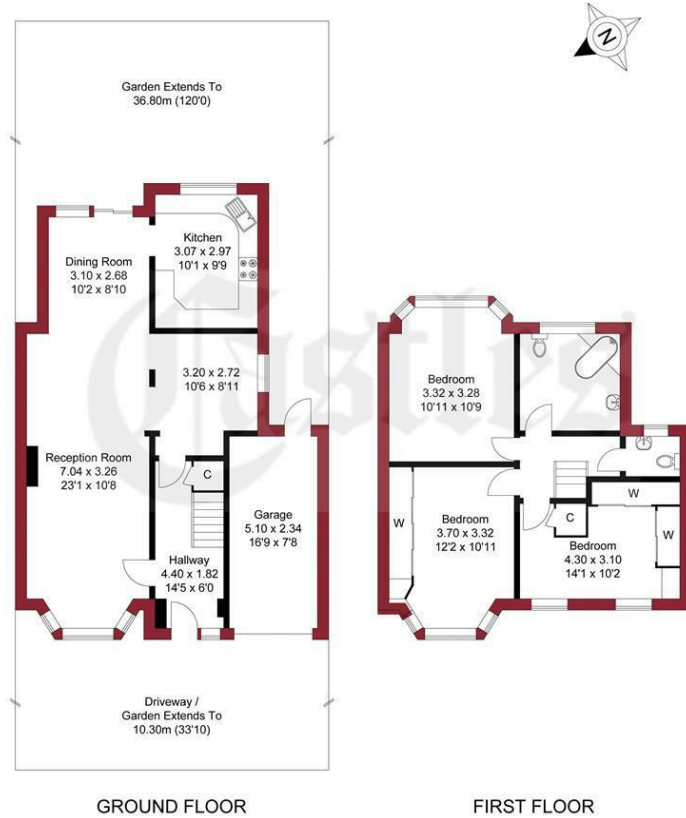




APPROXIMATE GROSS INTERNAL AREA  
114.48 sqm / 1232.25 sqft (Excluding Garage)  
126.41 sqm / 1360.66 sqft (Including Garage)

## A guide to the area

AREA GUIDE TEXT



THIS PLAN IS FOR ILLUSTRATION ONLY AND MAY NOT BE  
REPRESENTATIVE OF THE PROPERTY



House - Semi-Detached

Freehold

**Council:**

**Council Tax Band:** F

**Lease Remaining:** n/a

**Service Charge:** n/a

**Ground Rent:** n/a

Agents Note: Whilst every care has been taken to prepare these particulars, they are for guidance purposes only. All measurements are approximate and are for general guidance purposes only and whilst every care has been taken to ensure their accuracy, they should not be relied upon and potential buyers/tenants are advised to recheck the measurements



### OFFICE ADDRESS

243 - 245 Hertford Road  
Enfield  
London  
EN3 5JJ

### OFFICE DETAILS

0208 804 8000  
enfield@castles.london  
<https://www.castles.london>

Energy Efficiency Rating		Current	Potential
Very energy efficient - lower running costs			
(92-100) A			
(81-91) B			
(69-80) C			
(55-68) D			
(39-54) E			
(21-38) F			
(1-20) G			
Not energy efficient - higher running costs			
England & Wales			
EU Directive 2002/91/EC			