



Castles

ASKING PRICE

£440,000

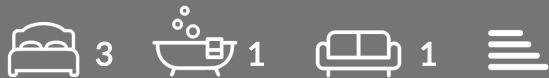
Great Cambridge Road

Enfield, EN1 4TB



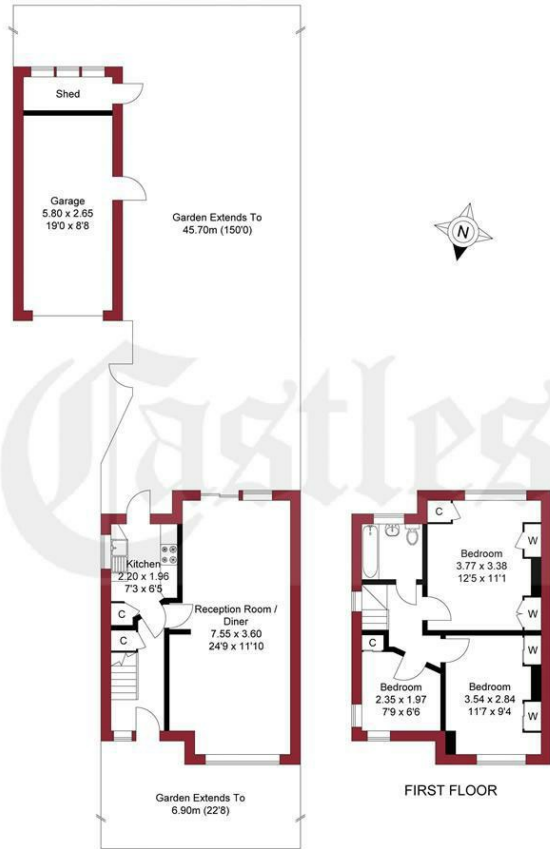
PROPERTY SUMMARY

A spacious 3 bedroom 1930's semi-detached family house located on the slip road off Great Cambridge Road, approximately 0.5m of Turkey Street train station and close to local schools and parks. The property requires modernising but offers potential for incoming buyers. Viewing is recommended. Features include: front off street parking, semi-detached, garage via shared drive, 1st floor bathroom, spacious through lounge, rear garden approximately 150' long, extension potential (subject to planning permission), chain free sale.





APPROXIMATE GROSS INTERNAL AREA
74.15 sqm / 798.14 sqft (Excluding Garage & Shed)
89.52 sqm / 963.58 sqft (Including Garage)

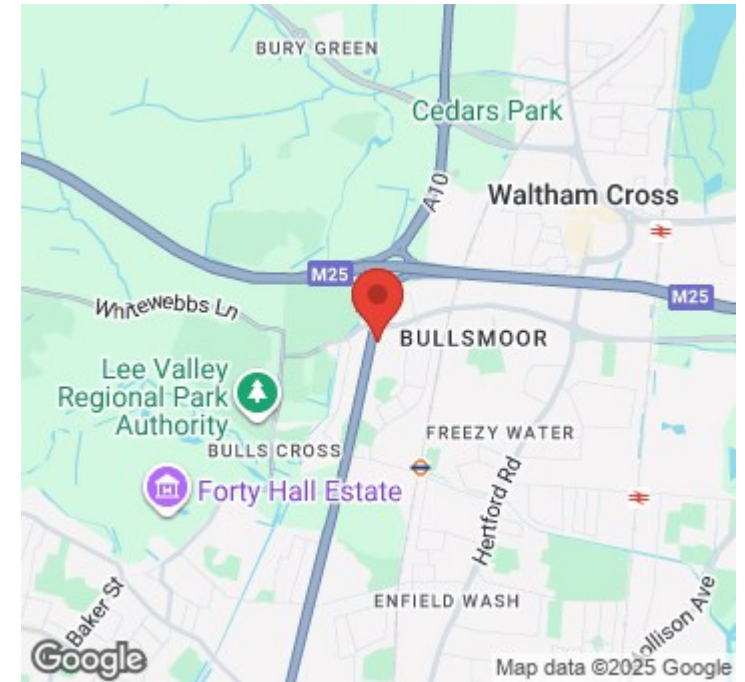


GROUND FLOOR

THIS PLAN IS FOR ILLUSTRATION ONLY AND MAY NOT BE
REPRESENTATIVE OF THE PROPERTY

A guide to the area

AREA GUIDE TEXT



House - Semi-Detached

Freehold

Council:

Council Tax Band: D

Lease Remaining: n/a

Service Charge: n/a

Ground Rent: n/a

Agents Note: Whilst every care has been taken to prepare these particulars, they are for guidance purposes only. All measurements are approximate and are for general guidance purposes only and whilst every care has been taken to ensure their accuracy, they should not be relied upon and potential buyers/tenants are advised to recheck the measurements



OFFICE ADDRESS

243 - 245 Hertford Road
Enfield
London
EN3 5JJ

OFFICE DETAILS

0208 804 8000
enfield@castles.london
<https://www.castles.london>

Energy Efficiency Rating		Current	Potential
Very energy efficient - lower running costs			
(92-100) A			
(81-91) B			
(69-80) C			
(55-68) D			
(39-54) E			
(21-38) F			
(1-20) G			
Not energy efficient - higher running costs			
England & Wales			
EU Directive 2002/91/EC			