



**Bedford Crescent, EN3 6JU**

£420,000

Freehold

**Castles**







## Bedford Crescent, EN3 6JU

An extended 3 bedroom mid terraced family house located in a quiet no through road off Princes Avenue in Freezywater, less then 1 mile from Enfield Lock and Waltham Cross train stations ( both serving London Liverpool St / Tottenham Hale ) and close to local shops and schools. The property is offered for sale on a chain free basis and viewing is recommended. Features Include double glazing, 3 bedrooms, ground floor bathroom plus 1st floor shower room, extended kitchen & 60' rear garden. Viewing is recommended

EPC Rating: E

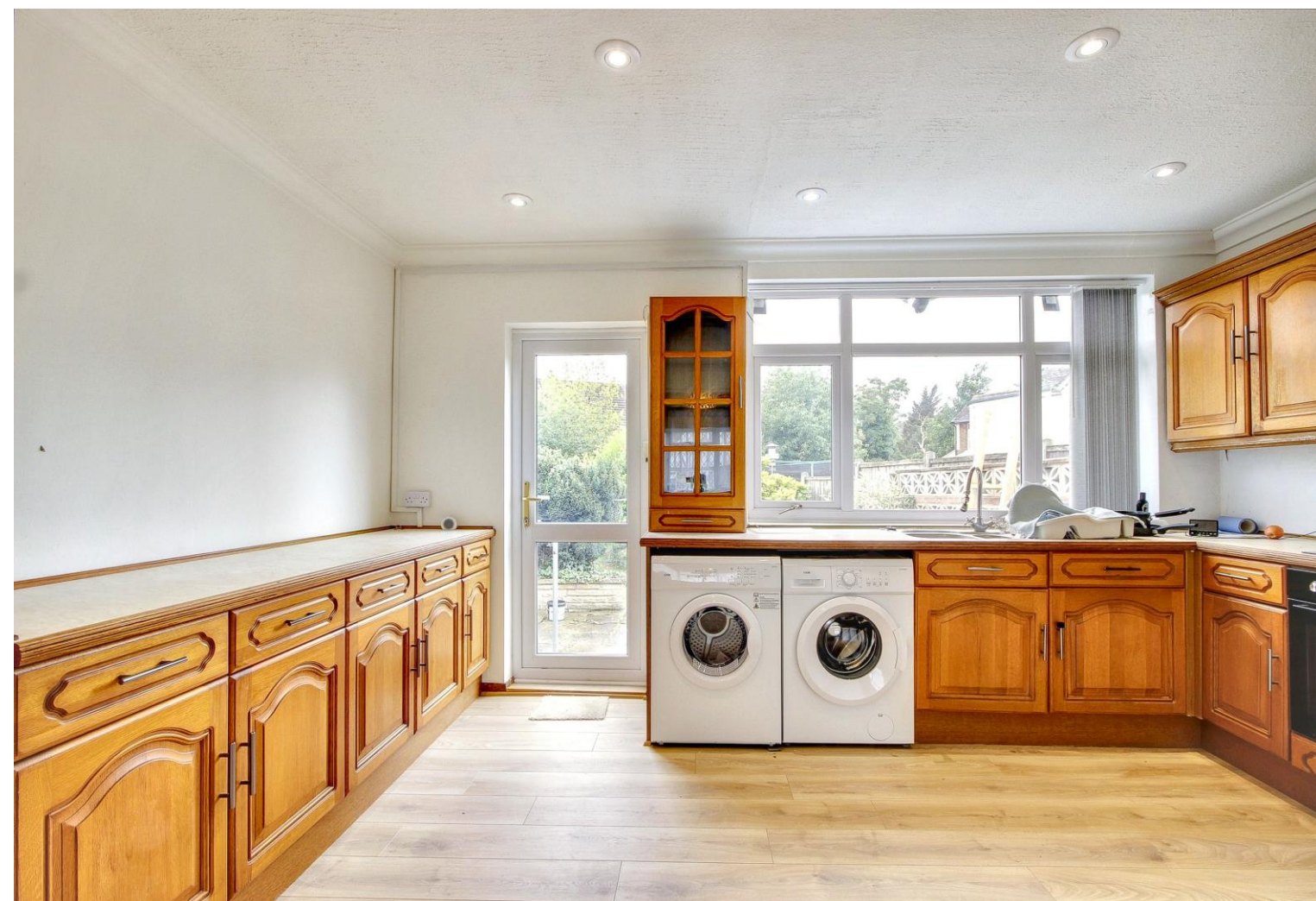
Council Tax Band : D



£420,000 Freehold

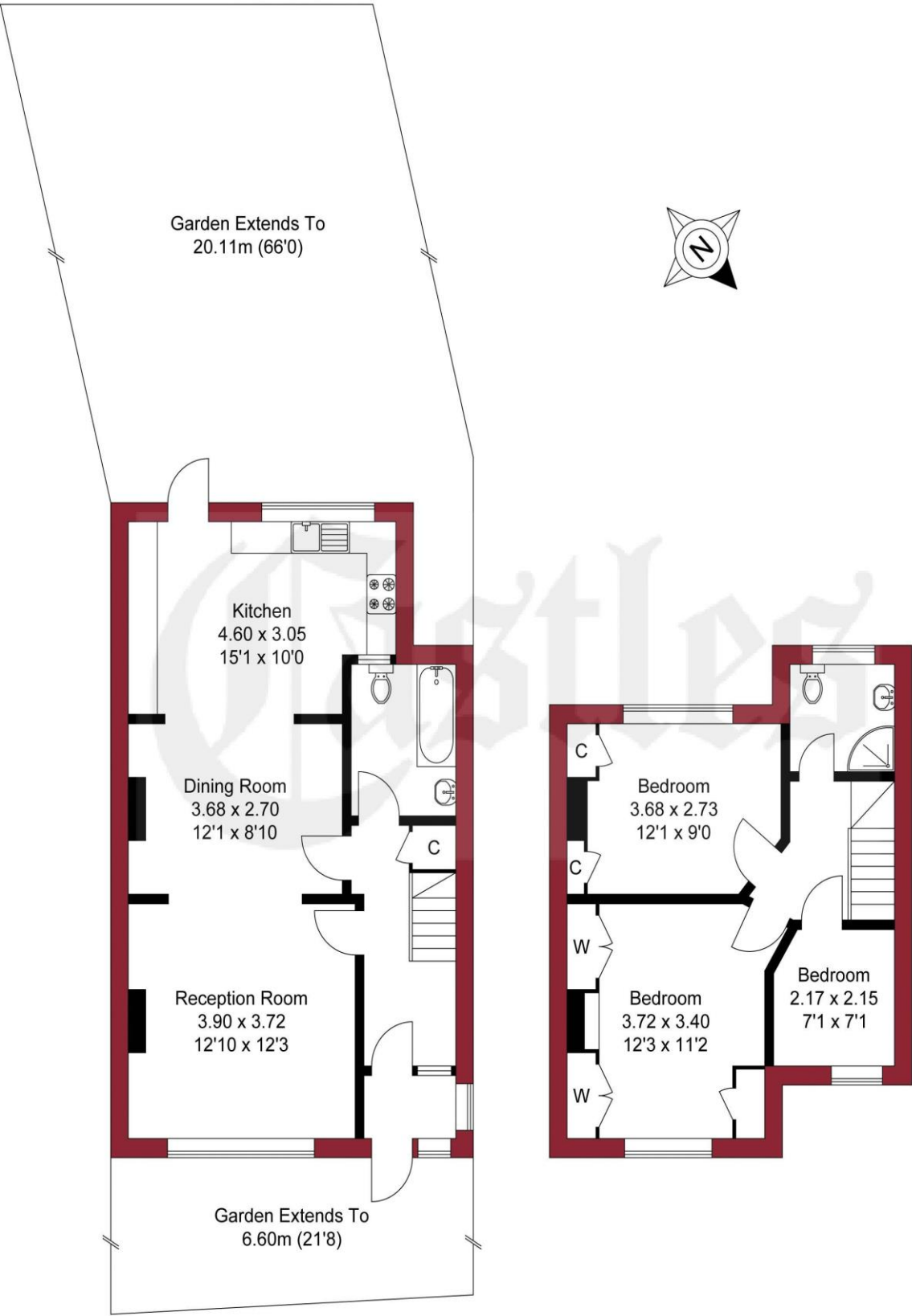
# Castles

020 8804 8000  
enfield@castles.london





APPROXIMATE GROSS INTERNAL AREA  
88.80 sqm / 955.83 sqft



GROUND FLOOR FIRST FLOOR

THIS PLAN IS FOR ILLUSTRATION ONLY AND MAY NOT BE  
REPRESENTATIVE OF THE PROPERTY

An overview of Enfield

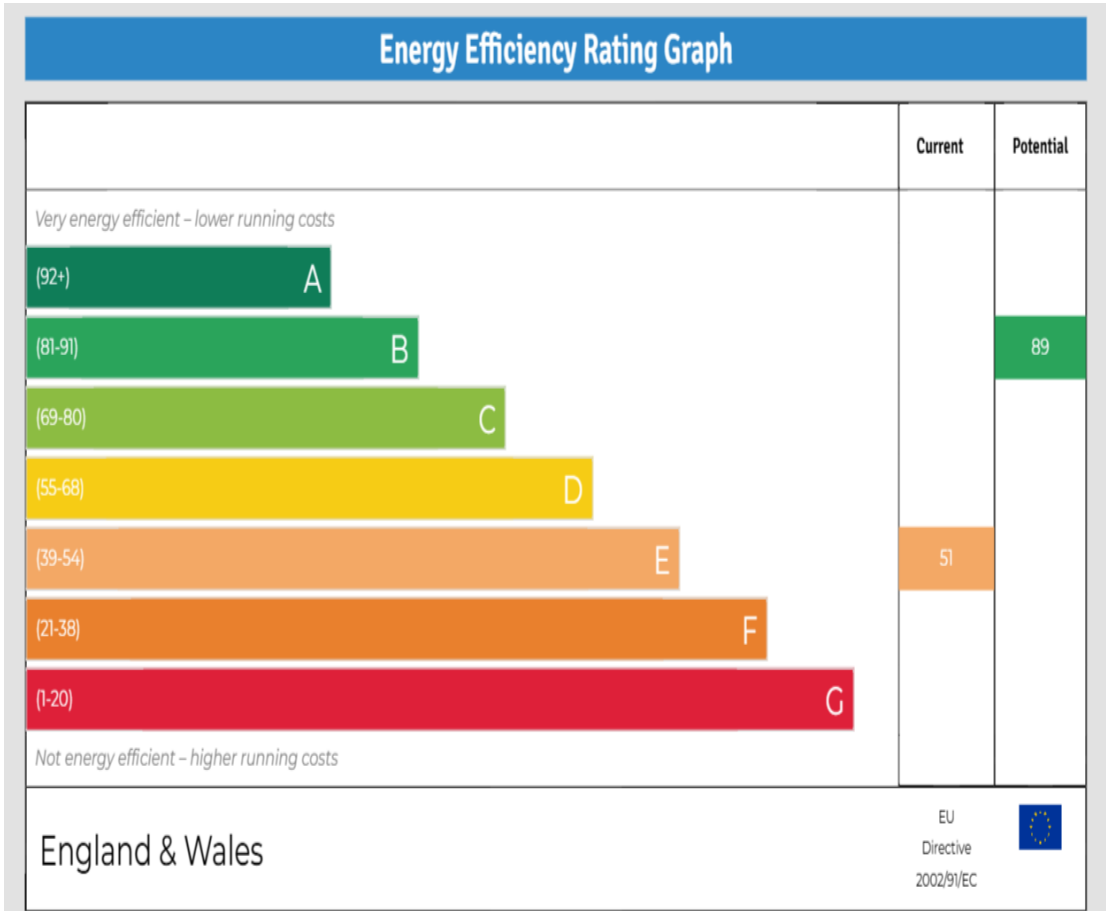
Enfield boasts a proud and distinguished history, home to several country houses and ancient monuments, the area also hosts a notable contingent of famous residents both past and present.

With affordable homes and a safe, green environment, Enfield attracts many buyers pleasantly surprised by the good value of property compared to some of the more pricey neighbouring boroughs.

On the lush, green perimeter of London, Enfield has excellent transport links with a quick and easy train journey into the City and West End.

There are a range of activities to keep residents busy in the borough with seven bustling shopping areas, 900 hectares of parks, three golf clubs, and numerous cinemas, theatres and museums. There is a diverse community residing in the area.

Notable for its range of great schools, vast green spaces and bustling retail centres, as well as good transport links to the rest of the city, Enfield is undoubtedly a thriving place to live and work and proves an excellent choice for first time buyers, families, young professionals and property investors alike.”



243-245 Hertford Road  
Enfield, EN3 5JJ  
0208 804 8000  
enfield@castles.london  
www.castles.london

All details including floorplans are for representation purposes only and do not constitute a contract or warranty. Whilst every effort is made to ensure accuracy of descriptions and measurements, no responsibility is taken for errors, omissions and misstatements.

find your happy

Smarter property search

Find the home you deserve

A free, fair and independent service for buyers, sellers, tenants and landlords of property in the UK.

National Association of Estate Agents  
LICENSED MEMBER