



**Belvedere Court, High Street,
Hoddesdon, EN11 8UX**
£179,950 Leasehold

Castles



Belvedere Court, High Street, Hoddesdon, EN11 8UX

A ground floor 1 bedroom retirement flat (over 60's) located on Hoddesdon High Street, close to the Town Centre. The property is in good decorative order and is offered for sale chain free. Viewing is highly recommended. Features inside the flat include: large modern sash windows, fitted kitchen, large wet room, living room, double bedroom and an emergency pull chord system. Outside the flat residents have access to communal gardens, 2 x residents' lounges with kitchens, communal laundry room, communal parking plus access to an on-site House Manager. Chain free sale.

EPC Rating: D
Council Tax Band: C

As advised by seller:-
Terms of Lease: Expires 31/12/2113.
Approximately 88 years remaining
Service Charge: £2,174.71 for 6 months
Ground Rent: £328.27 for 6 months

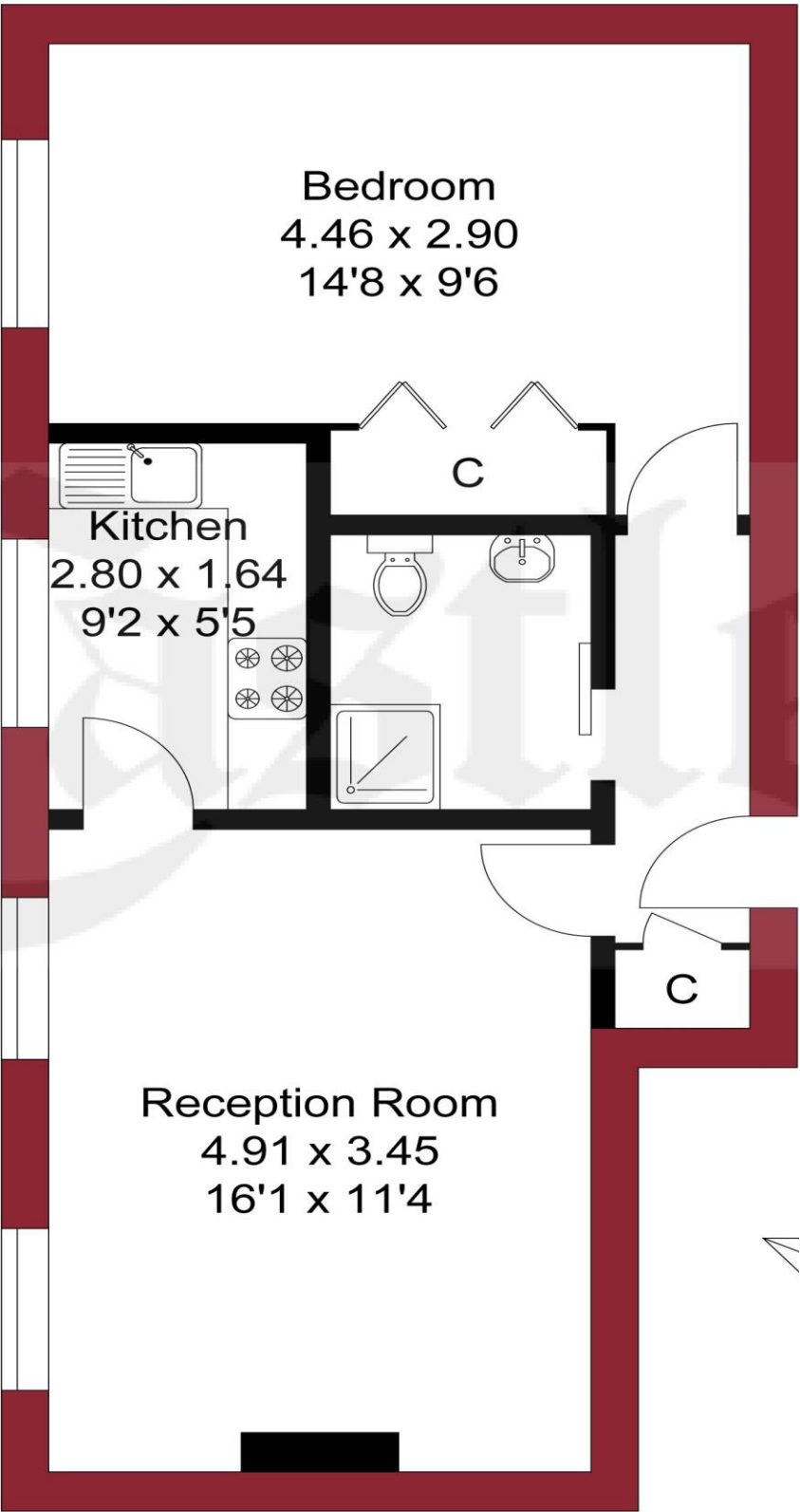
£179,950 **Leasehold**

Castles

020 8804 8000
enfield@castles.london

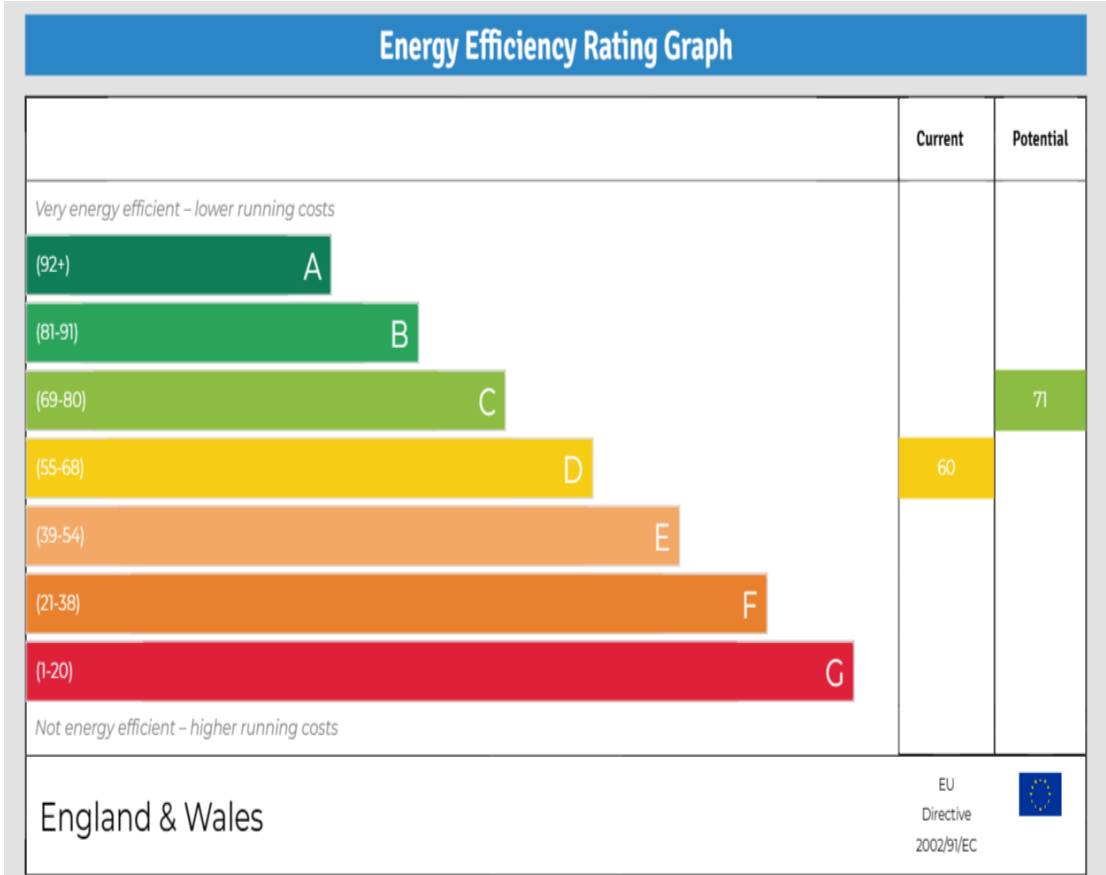


APPROXIMATE GROSS INTERNAL AREA
45.23 sqm / 486.85 sqft



GROUND FLOOR

THIS PLAN IS FOR ILLUSTRATION ONLY AND MAY REPRESENTATIVE OF THE PROPERTY



243-245 Hertford Road
Enfield, EN3 5JJ
0208 804 8000
enfield@castles.london
www.castles.london

All details including floorplans are for representation purposes only and do not constitute a contract or warranty. Whilst every effort is made to ensure accuracy of descriptions and measurements, no responsibility is taken for errors, omissions and misstatements.

find your happy

Smarter property search

Find the home you deserve

A free, fair and independent service for buyers, sellers, tenants and landlords of property in the UK.

National Association of Estate Agents
LICENSED MEMBER
NAEA