



Acer Court, Enstone Road, EN3 7WT

£247,000

Leasehold

Castles



Acer Court, Enstone Road, EN3 7WT

A recently re-decorated two double bedroom 2nd floor purpose built flat located off Green Street less than 0.5m of Brimsdown Train Station and close to bus routes, local shops and schools. The property offers immediate vacant possession and is chain free. Features include living room, fitted kitchen, security entry phone system, 2 double bedrooms, family bathroom, allocated parking space, double glazing, en-suite shower room to main bedroom and chain free sale.

EPC Rating: C

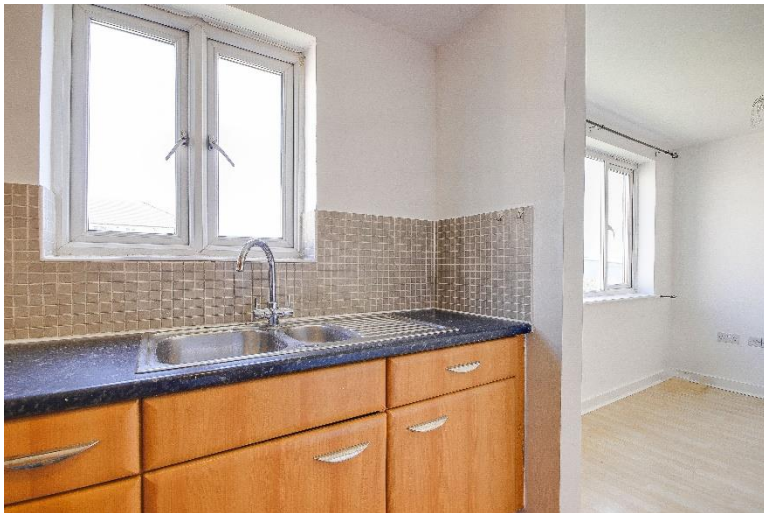
Council Tax Band: C

As advised by seller:-
Terms of Lease: Expires 31/12/2154.
Approximately 129 years remaining
Service Charge: £275 PCM
Ground Rent: £300 P/A

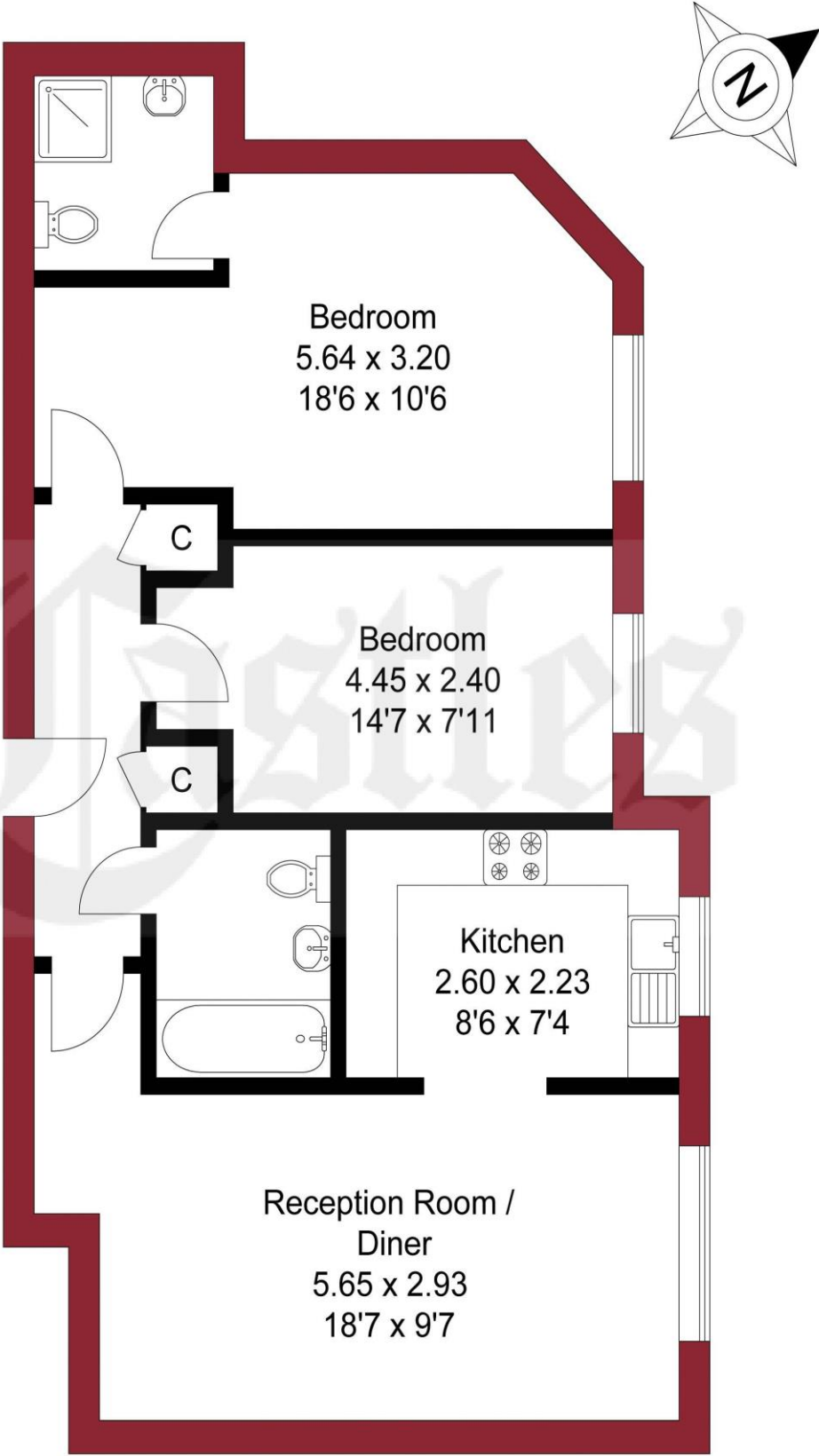
£247,000 **Leasehold**

Castles

020 8804 8000
enfield@castles.london



APPROXIMATE GROSS INTERNAL AREA
66.54 sqm / 716.23 sqft



SECOND FLOOR

THIS PLAN IS FOR ILLUSTRATION ONLY AND MAY NOT BE
REPRESENTATIVE OF THE PROPERTY

An overview of Enfield

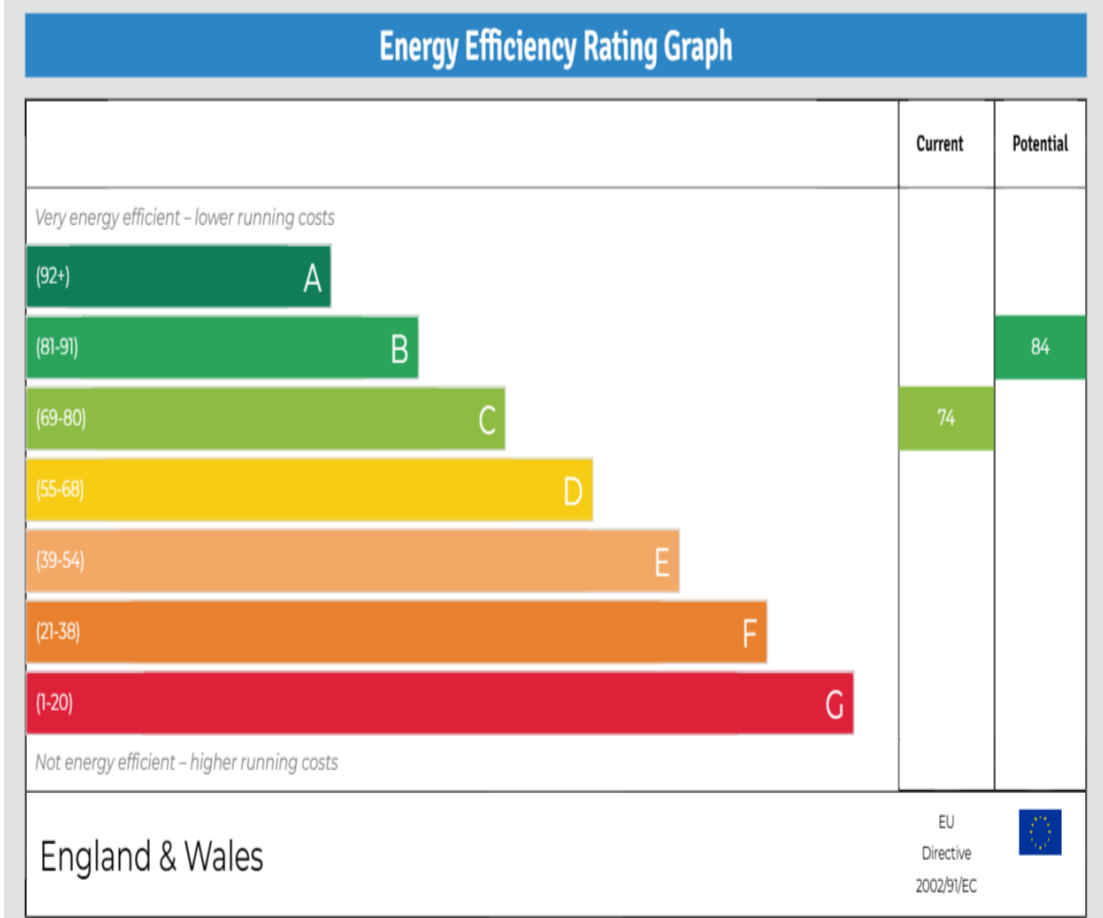
Enfield boasts a proud and distinguished history, home to several country houses and ancient monuments, the area also hosts a notable contingent of famous residents both past and present.

With affordable homes and a safe, green environment, Enfield attracts many buyers pleasantly surprised by the good value of property compared to some of the more pricey neighbouring boroughs.

On the lush, green perimeter of London, Enfield has excellent transport links with a quick and easy train journey into the City and West End.

There are a range of activities to keep residents busy in the borough with seven bustling shopping areas, 900 hectares of parks, three golf clubs, and numerous cinemas, theatres and museums. There is a diverse community residing in the area.

Notable for its range of great schools, vast green spaces and bustling retail centres, as well as good transport links to the rest of the city, Enfield is undoubtedly a thriving place to live and work and proves an excellent choice for first time buyers, families, young professionals and property investors alike."



243-245 Hertford Road
Enfield, EN3 5JJ
0208 804 8000
enfield@castles.london
www.castles.london

All details including floorplans are for representation purposes only and do not constitute a contract or warranty. Whilst every effort is made to ensure accuracy of descriptions and measurements, no responsibility is taken for errors, omissions and misstatements.

find your happy

Smarter property search

Find the home you deserve

A free, fair and independent service for buyers, sellers, tenants and landlords of property in the UK.

National Association of Estate Agents
LICENSED MEMBER