



Elsinge Road, EN1 4PE

£250,000

Leasehold

Castles



Elsinge Road, EN1 4PE

A spacious 2 double bedroom 1st floor purpose built flat located within approximately 0.5m of Turkey Street train station (serving London Liverpool Street) and close to the Great Cambridge Road. The property is offered for sale chain free and viewing is recommended. Features include:- double glazing, gas central heating, living room, spacious kitchen, 1st floor, 2 double bedrooms, chain free sale.

EPC Rating: C

Council Tax Band: B

As advised by Seller

Terms of Lease:-

Expires 2112. Approximately 88 years remaining

Service Charge: £1800

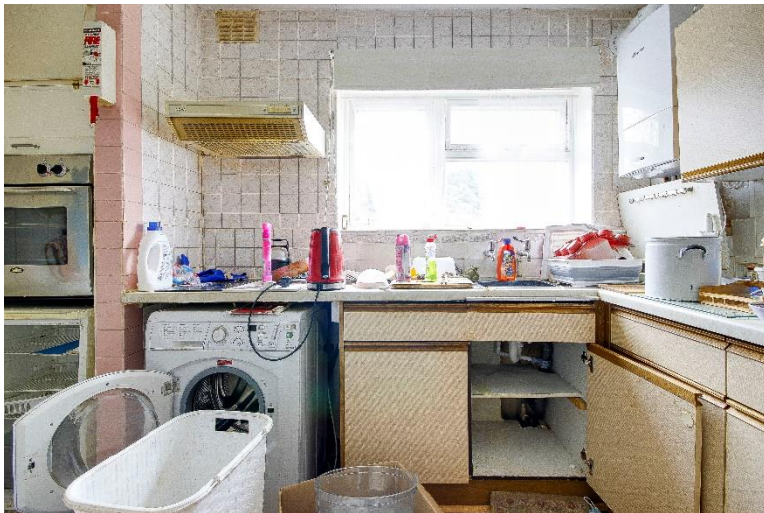
Ground Rent: £10 P/A

£250,000 Leasehold

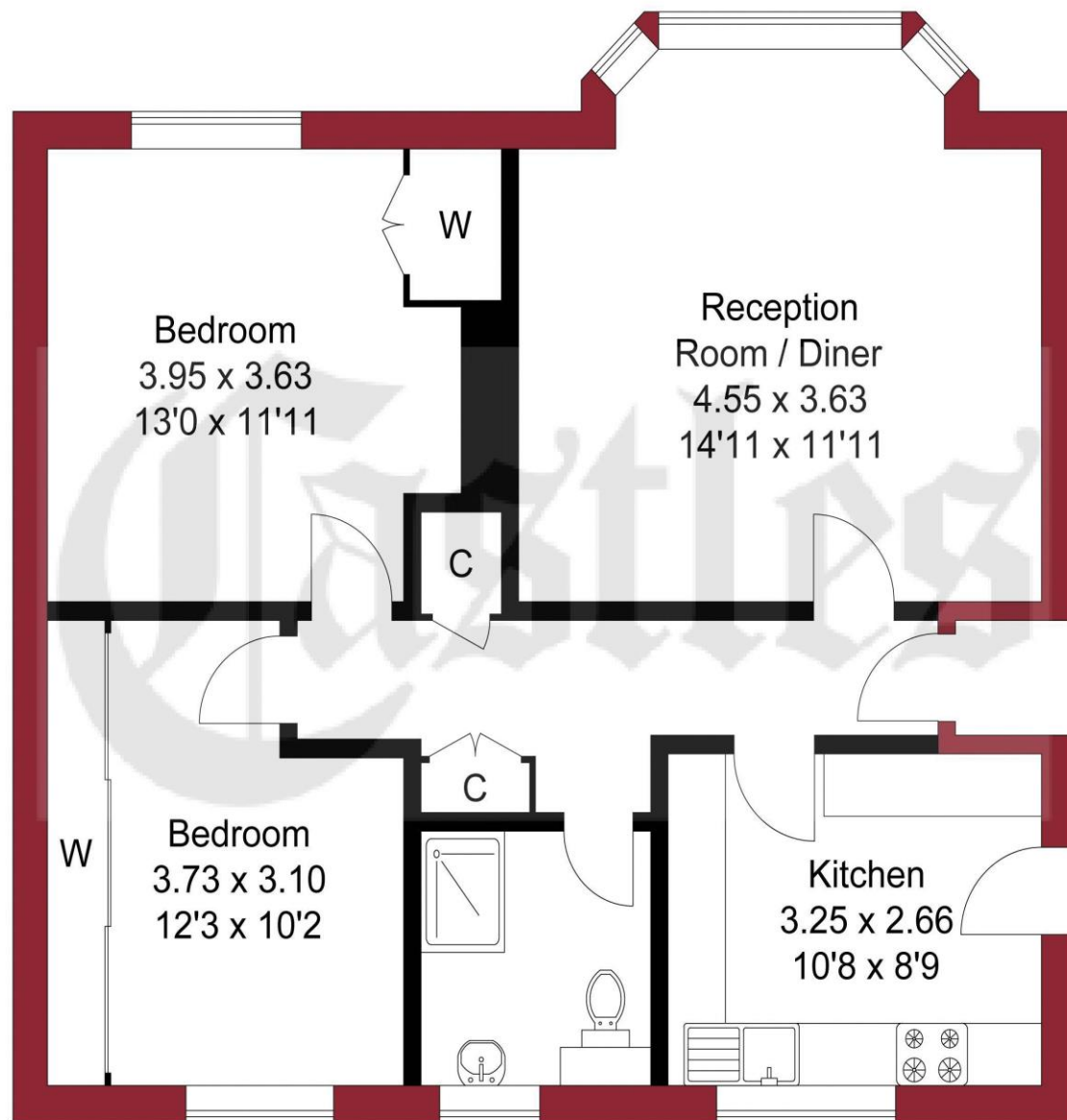
Castles

020 8804 8000

enfield@castles.london



APPROXIMATE GROSS INTERNAL AREA
66.01 sqm / 710.52 sqft



THIS PLAN IS FOR ILLUSTRATION ONLY AND MAY NOT BE REPRESENTATIVE OF THE PROPERTY

An overview of Enfield

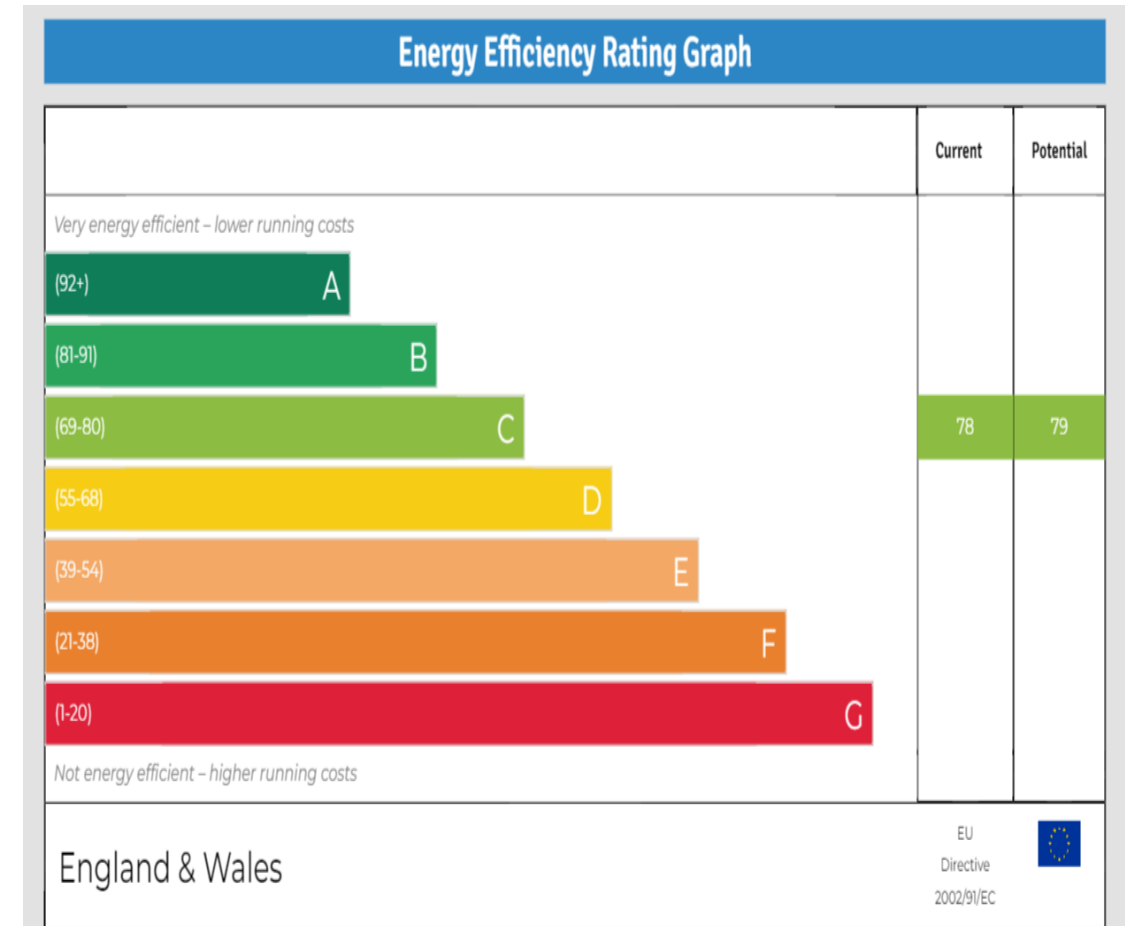
Enfield boasts a proud and distinguished history, home to several country houses and ancient monuments, the area also hosts a notable contingent of famous residents both past and present.

With affordable homes and a safe, green environment, Enfield attracts many buyers pleasantly surprised by the good value of property compared to some of the more pricey neighbouring boroughs.

On the lush, green perimeter of London, Enfield has excellent transport links with a quick and easy train journey into the City and West End.

There are a range of activities to keep residents busy in the borough with seven bustling shopping areas, 900 hectares of parks, three golf clubs, and numerous cinemas, theatres and museums. There is a diverse community residing in the area.

Notable for its range of great schools, vast green spaces and bustling retail centres, as well as good transport links to the rest of the city, Enfield is undoubtedly a thriving place to live and work and proves an excellent choice for first time buyers, families, young professionals and property investors alike."



243-245 Hertford Road
Enfield, EN3 5JJ
0208 804 8000
enfield@castles.london
www.castles.london

All details including floorplans are for representation purposes only and do not constitute a contract or warranty. Whilst every effort is made to ensure accuracy of descriptions and measurements, no responsibility is taken for errors, omissions and misstatements.

