



Park Avenue North, N8

£2,250,000

Freehold

Castles







## Park Avenue North, N8

This beautifully renovated Edwardian home seamlessly combines the elegance of the past with the luxury of modern living. Meticulously presented, the property boasts a harmonious blend of fabulous contemporary finishes alongside exquisite period detailing, offering a unique and sophisticated living experience.

As you step inside, you'll be greeted by the grandeur of high ceilings, stunning original features, and an abundance of natural light flowing through large, carefully restored windows. The open-plan living spaces are designed for modern living, with a spacious, stylishly appointed bespoke kitchen, complete with premium appliances and sleek finishes. The contemporary design flows effortlessly into the elegant living and dining area, creating a perfect setting for both relaxed family living and entertaining guests. Leading out to a glorious, landscaped west facing garden.

Upstairs, the home offers generously proportioned bedrooms, study, and family bathroom with an array of beautiful period details, including intricate cornices and sash windows, all enhanced by thoughtful, high-end en-trend decor. The principal suite is a luxurious retreat, with ample wardrobes and an en-suite bathroom designed for ultimate comfort and style.

The outdoor space, leading from main family area is just as impressive, with a landscaped west facing garden that offers both privacy and tranquillity. It's ideal for enjoying sunny afternoons or evening gatherings, all within the backdrop of this beautiful home. Perfectly situated between two of the area's most sought-after parks, you'll enjoy the best of both worlds—peaceful green spaces just moments away, as well as excellent local amenities and transport links nearby. Further comprising large lower ground area, accessed directly from family area and own external entrance, incorporating guest w.c., gym, utility, and plant room. Benefitting from front off-street parking, part under floor heating and telecommunication hub.

This stunning Edwardian gem offers the perfect blend of timeless charm and modern elegance. Don't miss out on the opportunity to own this exceptional home—book your viewing today!

Local Authority: Haringey  
Council Tax band: G

EPC Rating: C  
Current: 72/C Potential: 80/C

£2,250,000 Freehold

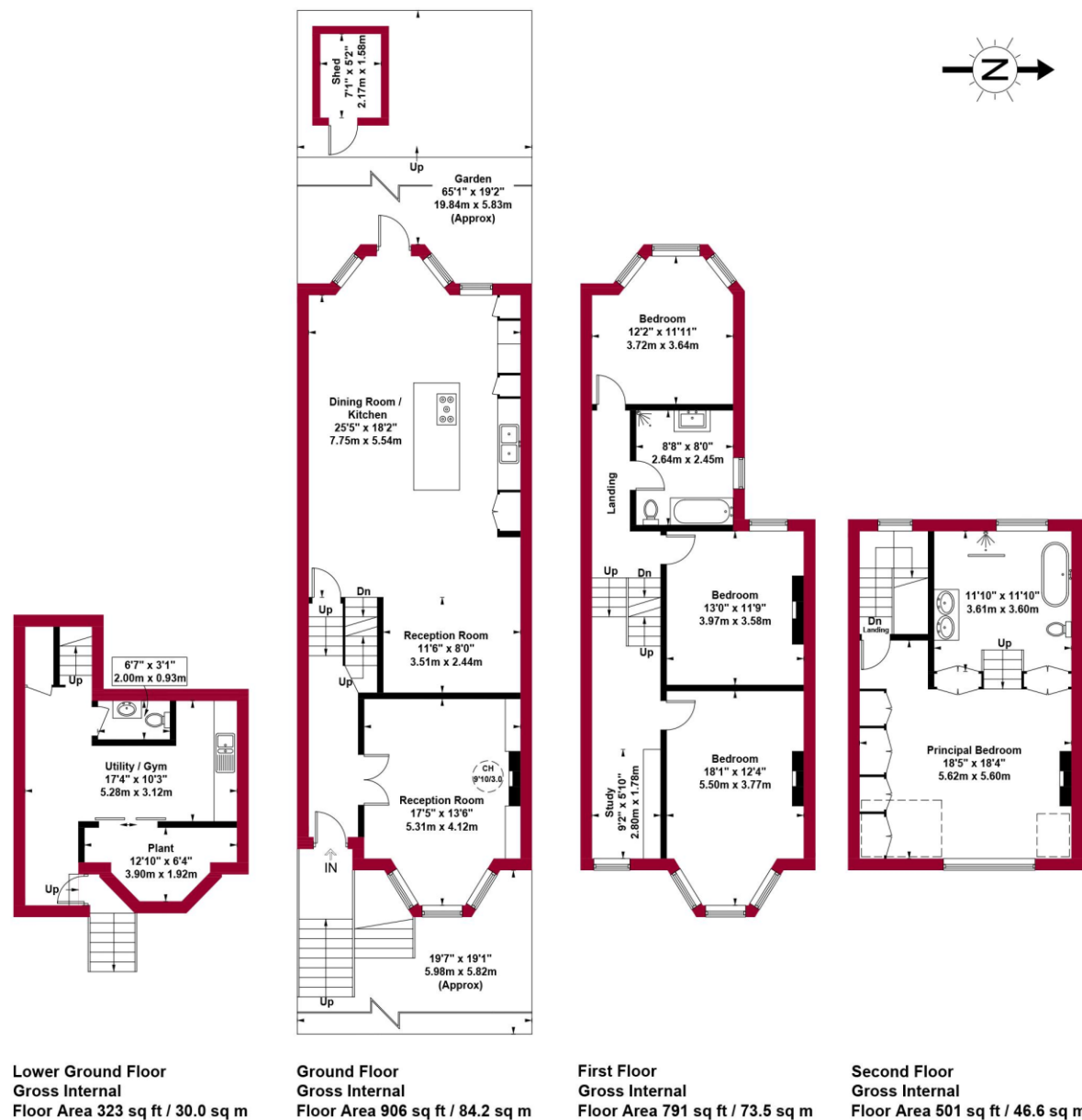


020 8348 5515  
crouchend@castles.london





**Shed** = 36 sq ft / 3.4 sq m



Situated in a valley, Crouch End is overlooked by nearby Muswell Hill, Highgate and Alexandra Palace. The leafy and hilly surroundings enhance the village feel. A vast array of character period properties are progressively being combined with modern high specification developments. With its diverse independent retailers and high street stores accompanied with good schools and parks this bohemian and vibrant location ensures Crouch End remains a desirable place to reside. Packed with lots to see and do with great feeling of community spirit. The area is dominated by a vibrant 'Village' with the landmark Clock tower at the centre of attraction with a fine range of independent retailers, coffee shops, bars and restaurants, while there is a distinct open feel to the area, owing to a large number of green spaces including Parkland walk.

Once a medieval route from London to the north of England, Crouch End, which was governed as part of Hornsey, was a mainly wooded area containing farms and villas, including Crouch Hall, built in the 17<sup>th</sup> century at the intersection of what came to be known as Crouch End. The area changed rapidly in the late 18<sup>th</sup> century from a largely rural area to a prosperous middle-class suburb, due to a sharp rise in professionals, including clerical workers moving to the area looking to commute into the city, thanks to the development of the railway in the area. Many of the old houses were demolished and replaced with housing aimed at the middle-class.

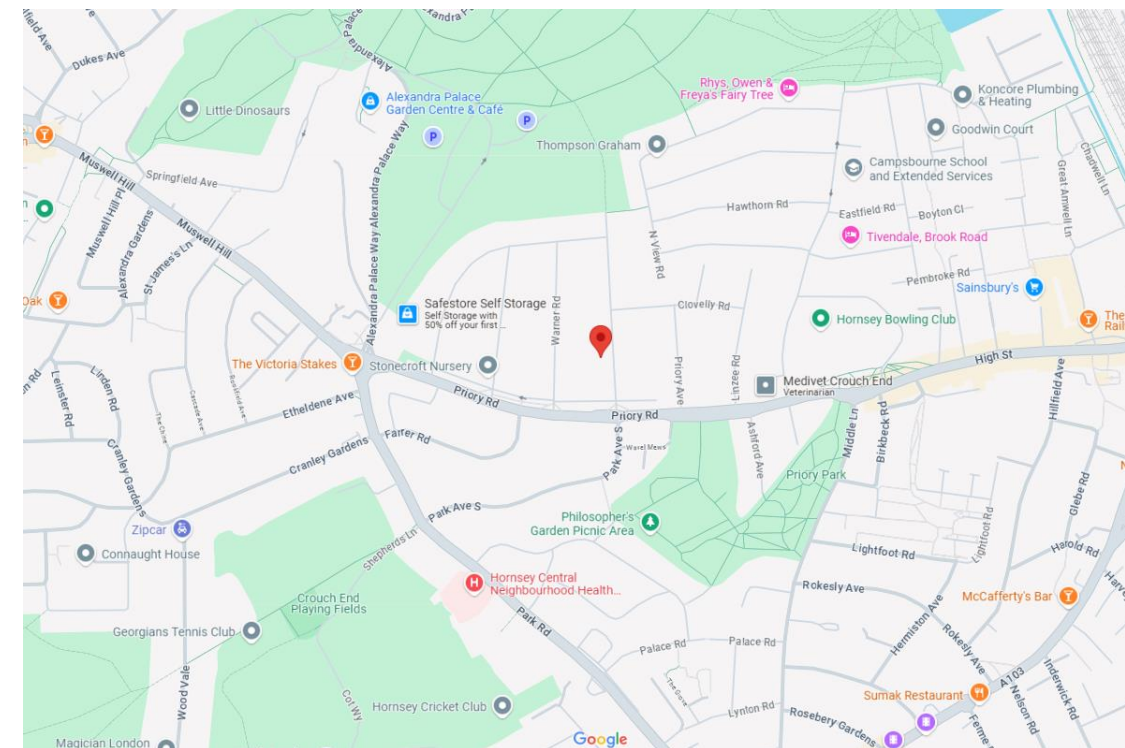
With its vast array of both Edwardian and Victorian properties and the progressive emergence of modern high specification developments, Crouch End attracts many different types of property buyers and tenants, from professionals and families to first-time buyers and students. It is also very popular with buy-to-let investors. Property prices and rents reflect the predominately affluent area.

Crouch End offers an amazing array of shops, services, restaurants, bars and cafes, with a perfect blend of old and new. Shops on the Broadway include upmarket restaurants and supermarkets as well as numerous cafes and bars spilling out onto the pavements. There is also a long-standing baker, Dunn's, as well as two butchers, a fishmonger and a greengrocer. Whether one is looking for traditional English grub or somewhere that serves something a little more exotic, there is no shortage of gastropubs, elegant restaurants, wine bars and pubs to suit all tastes.

There are plenty of open green spaces in and around Crouch End, including Highgate Woods to the west, with Queen's Wood adjacent. Additionally, Alexandra Park is to the north of Crouch End, with Finsbury Park to the south. These two parks are connected by 'The Parkland Walk', a former railway line. Other parks in the area include Stationers Park and Priory Park. In addition there a number of fitness centres, Tennis & Cricket clubs and Park Road swimming pool.

Crouch End is considered a safe neighbourhood. It is served by Highgate Police Station on Archway Road and Muswell Hill Police Station on Fortis Green. Hornsey Fire Station is located on Priory Road. There are a number of GP & Dental practices including The Vale Practice in Park Road, Queenswood Medical Practice at 151 Park Road, Crouch End Health Centre at 45 Middle Lane and Muswell Practice (Pinnacle Close at top of Muswell Hill). The nearest hospital is The Whittington & University College Hospital

There are plenty of transport options in and around Crouch End. The nearest Tube and train stations are Highgate (Northern Line, Zone 3), Finsbury Park (Overground, Piccadilly & Victoria, Zone 2), Crouch Hill (Overground, Zone 3), Hornsey (Overground, Zone 3), Haringey (Overground, Zone 3) and Archway (Northern Line, Zone 2/3). Buses and night buses, including the 41, 91, 210, W3, W5, W7, N41 and N91, provide a good service to other parts of London.



# Castles

[www.castles.london](http://www.castles.london)

All details including floorplans are for representation purposes only and do not constitute a contract or warranty. Whilst every effort is made to ensure accuracy of descriptions and measurements, no responsibility is taken for errors, omissions and misstatements.

**rightmove**   
find your happy

**Zoopla**  
Smarter property search



**PrimeLocation**  
Find the home you deserve



*A free, fair and independent service for buyers,  
sellers, tenants and landlords of property in the UK.*



This plan is for layout guidance only and is not drawn to scale unless stated. All dimensions, including windows, doors, and the Total Gross Internal Area (GIA), are approximate. For precise measurements, please consult a qualified architect or surveyor before making any decisions based on this plan.

