



**Campsfield Road, N8**

£600,000

Freehold

**Castles**



## Campsfield Road, N8

Castles are delighted to offer for sale this beautifully presented, three-bedroom, ex-local authority house. The property has been newly refurbished by the current owners and is settled within a quiet cul-de-sac within a moments' walk of the green open space of Alexandra Park.

Further comprising eat-in kitchen, family bathroom, separate downstairs cloakroom and generous reception leading onto private rear garden.

Ideally located for the amenities on High Street Hornsey and walking distance to Crouch End Broadway. An easy commute to the City is assisted by nearby Alexandra Palace and Hornsey British Rail stations and a selection of local bus routes.

The property will be sold on a chain free basis.

*Local Authority: Haringey*  
*Council Tax band: D*

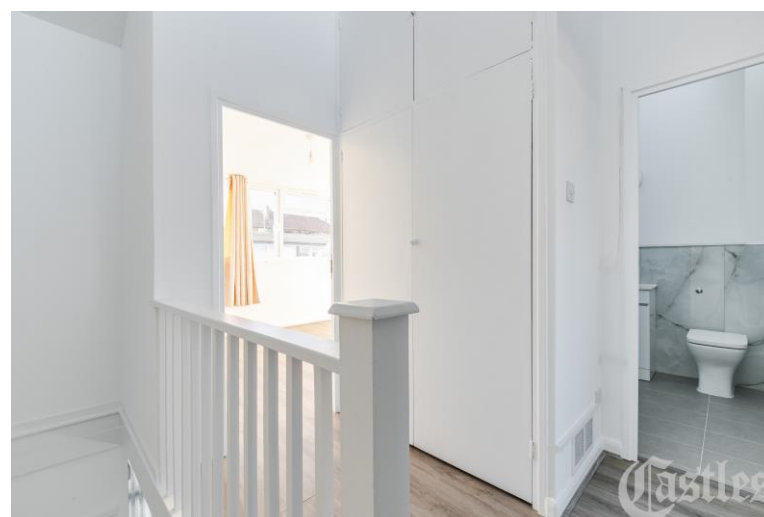
*EPC Rating: D*  
*Current: 66/D Potential: 84/B*

**£600,000**

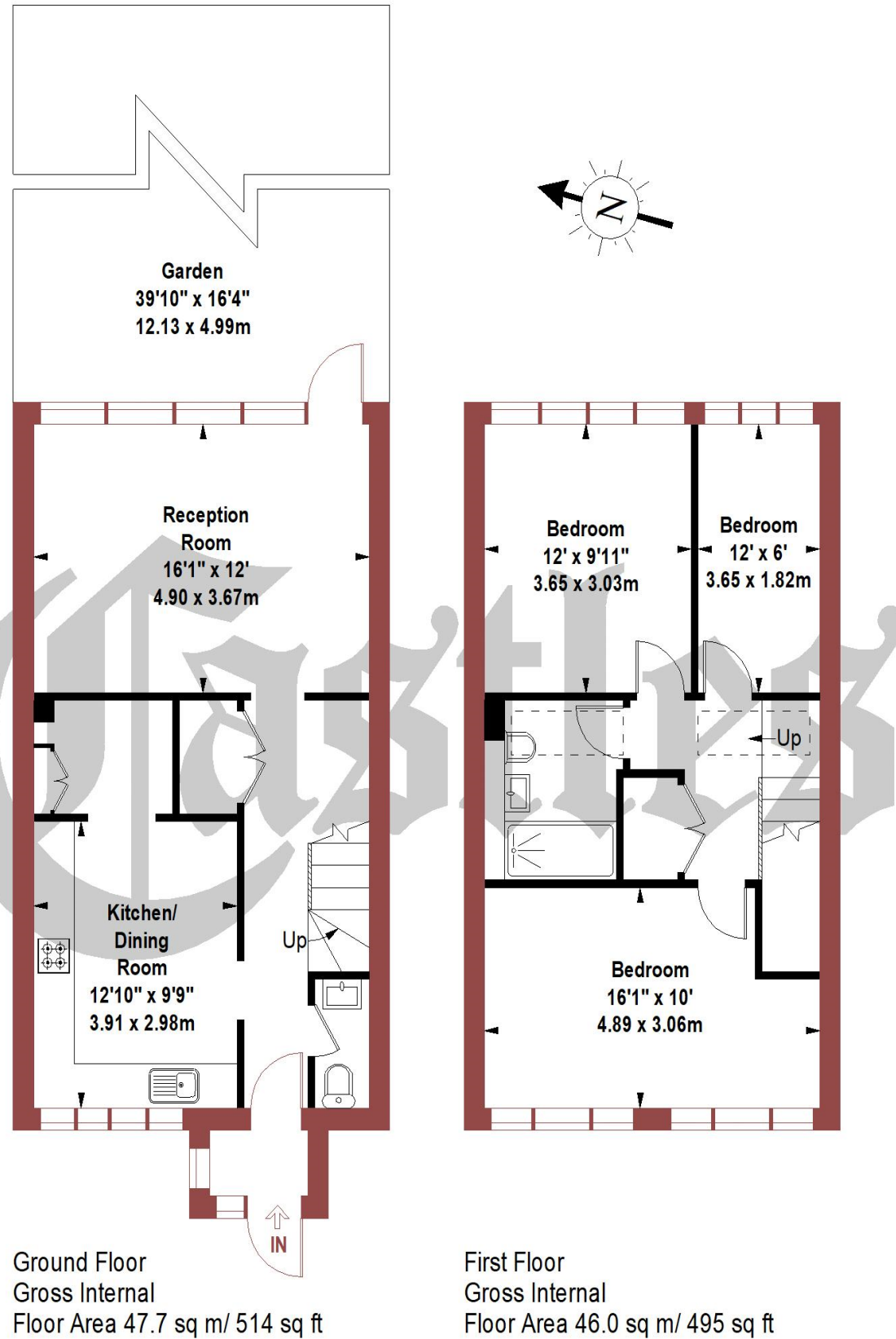
**Freehold**

# Castles

**020 8348 5515**  
**crouchend@castles.london**



Approx. Gross Internal Area = 93.74 sq m / 1009 sq ft



The Floor plan is not to scale and measurements and areas shown are approximate and therefore should be used for illustrative purposes only. The plan has been prepared in accordance with the RICS code of Measuring Practice and whilst we have confidence in the information produced it must not be relied on. If there is any aspect of particular importance, you should carry out or commission your own inspection of the property.

**An overview of Crouch End**

Situated in a valley, Crouch End is overlooked by nearby Muswell Hill, Highgate and Alexandra Palace. The leafy and hilly surroundings enhance the village feel. A vast array of character period properties are progressively being combined with modern high specification developments. With its diverse independent retailers and high street stores accompanied with good schools and parks this bohemian and vibrant location ensures Crouch End remains a desirable place to reside. Packed with lots to see and do with great feeling of community spirit. The area is dominated by a vibrant 'Village' with the landmark Clock tower at the centre of attraction with a fine range of independent retailers, coffee shops, bars and restaurants, while there is a distinct open feel to the area, owing to a large number of green spaces including Parkland walk.

**History**

Once a medieval route from London to the north of England, Crouch End, which was governed as part of Hornsey, was a mainly wooded area containing farms and villas, including Crouch Hall, built in the 17<sup>th</sup> century at the intersection of what came to be known as Crouch End. The area changed rapidly in the late 18<sup>th</sup> century from a largely rural area to a prosperous middle-class suburb, due to a sharp rise in professionals, including clerical workers moving to the area looking to commute into the city, thanks to the development of the railway in the area. Many of the old houses were demolished and replaced with housing aimed at the middle-class.

**Housing Stock**

With its vast array of both Edwardian and Victorian properties and the progressive emergence of modern high specification developments, Crouch End attracts many different types of property buyers and tenants, from professionals and families to first-time buyers and students. It is also very popular with buy-to-let investors. Property prices and rents reflect the predominately affluent area.

**Shopping, food and drink**

Crouch End offers an amazing array of shops, services, restaurants, bars and cafes, with a perfect blend of old and new. Shops on the Broadway include upmarket restaurants and supermarkets as well as numerous cafes and bars spilling out onto the pavements. There is also a long-standing baker, Dunn's, as well as two butchers, a fishmonger and a greengrocer. Whether one is looking for traditional English grub or somewhere that serves something a little more exotic, there is no shortage of gastropubs, elegant restaurants, wine bars and pubs to suit all tastes.

**Recreational Grounds & Amenities**

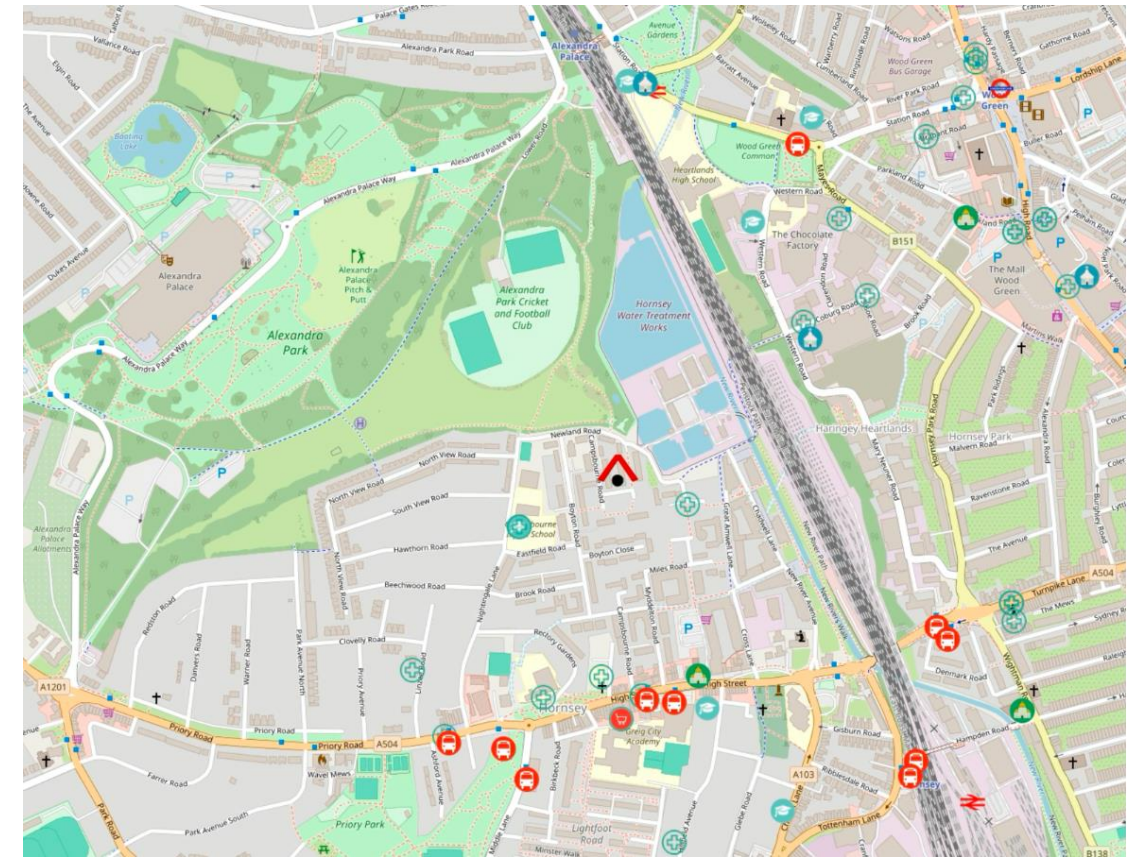
There are plenty of open green spaces in and around Crouch End, including Highgate Woods to the west, with Queen's Wood adjacent. Additionally, Alexandra Park is to the north of Crouch End, with Finsbury Park to the south. These two parks are connected by 'The Parkland Walk', a former railway line. Other parks in the area include Stationers Park and Priory Park. In addition there are a number of fitness centres, Tennis & Cricket clubs and Park Road swimming pool.

**Emergency services**

Crouch End is considered a safe neighbourhood. It is served by Highgate Police Station on Archway Road and Muswell Hill Police Station on Fortis Green. Hornsey Fire Station is located in Priory Road. There are a number of GP & Dental practices including The Christchurch Hall Surgery, Allenson House Medical Centre and The Beaumont Practice. The nearest hospital is The Whittington & University College Hospital.

**Transportation**

There are plenty of transport options in and around Crouch End. The nearest Tube and train stations are Highgate (Northern Line, Zone 3), Finsbury Park (Overground, Piccadilly & Victoria, Zone 2), Crouch Hill (Overground, Zone 3), Hornsey (Overground, Zone 3), Haringey (Overground, Zone 3) and Archway (Northern Line, Zone 2/3). Buses and night buses, including the 41, 91, 210, W3, W5, W7, N41 and N91, provide a good service to other parts of London.



# Castles

12 Topsfield Parade, Crouch End  
London N8 8PR  
020 8348 5515  
crouchend@castles.london  
www.castles.london

All details including floorplans are for representation purposes only and do not constitute a contract or warranty. Whilst every effort is made to ensure accuracy of descriptions and measurements, no responsibility is taken for errors, omissions and misstatements.

Logos for Rightmove (find your happy), Zoopla (Smarter property search), PrimeLocation (Find the home you deserve), OnTheMarket.com, The Property Ombudsman (A free, fair and independent service for buyers, sellers, tenants and landlords of property in the UK), and NAEA (National Association of Estate Agents, Licensed Member).