



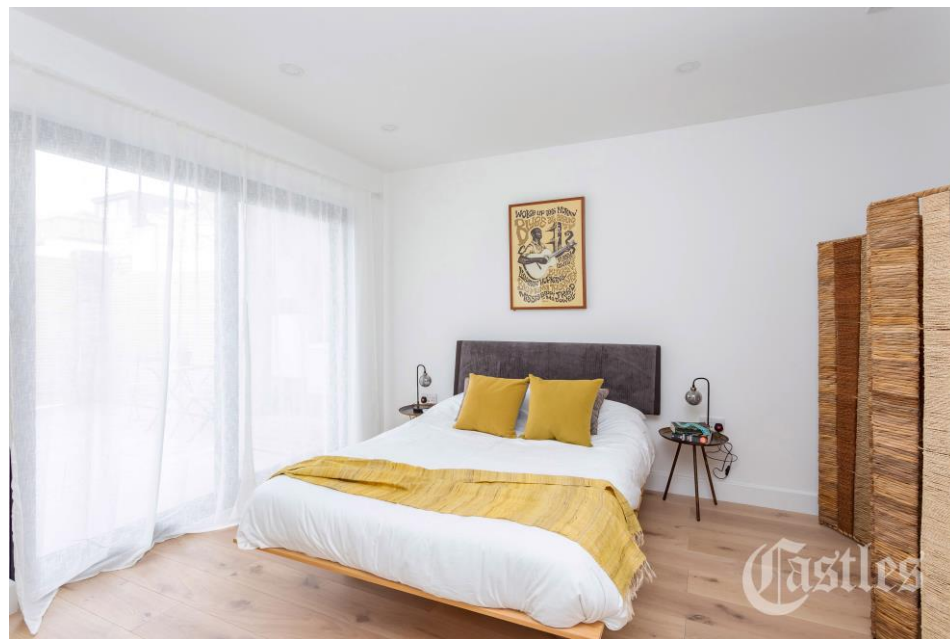
Dashwood Road, N8

£750,000

Freehold

Castles

Castles



Dashwood Road, N8

NEW HOME - A unique and inspiring designed, newly-built, two-bedroom detached residence positioned on an elevated, residential turning within a short walk to Crouch End Broadway. This modern home offers an abundance of light throughout with neutral and sleek, practical detailing. Further comprising en-suite, additional bathroom and spacious open-planned kitchen/reception with clear open views of Alexandra Palace. Benefits include utility and cloakroom/storage, under floor heating, integrated bosch appliances, courtyard garden and 10 years building warranty. Ideally positioned for an array of transportation links into Finsbury Park, City and West End.

EPC Rating: C
Current: 82 Potential: 94

£750,000

Freehold

Castles

020 8348 5515
crouchend@castles.london



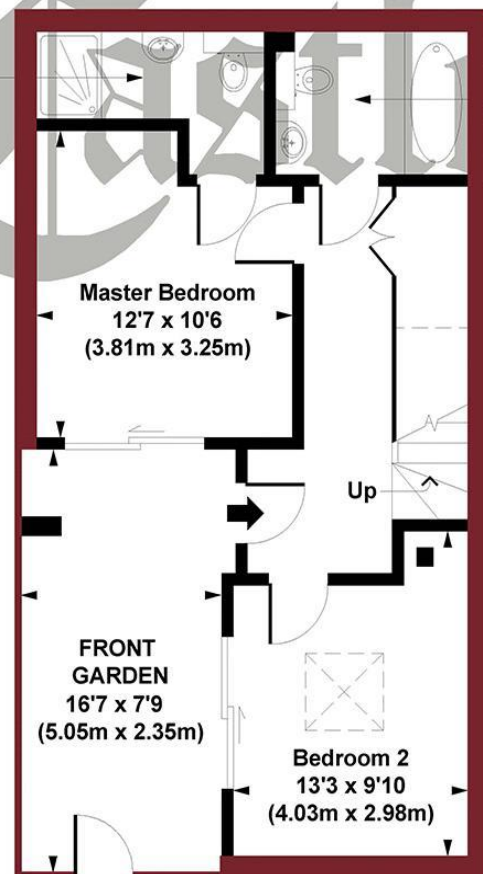
APPROXIMATE GROSS INTERNAL AREA

76.51 sq. m / 823 sq. ft



First Floor
Gross Internal
Floor Area 363 sq ft

En Suite
Shower Room
9'6" x 5'10"
(2.89m x 1.77m)



Ground Floor
Gross Internal
Floor Area 460 sq ft

THIS PLAN IS FOR ILLUSTRATION ONLY AND MAY NOT BE REPRESENTATIVE OF THE PROPERTY

An overview of Crouch End

Situated in a valley, Crouch End is overlooked by nearby Muswell Hill, Highgate and Alexandra Palace. The leafy and hilly surroundings enhance the village feel. A vast array of character period properties are progressively being combined with modern high specification developments. With its diverse independent retailers and high street stores accompanied with good schools and parks this bohemian and vibrant location ensures Crouch End remains a desirable place to reside. Packed with lots to see and do with great feeling of community spirit. The area is dominated by a vibrant 'Village' with the landmark Clock tower at the centre of attraction with a fine range of independent retailers, coffee shops, bars and restaurants, while there is a distinct open feel to the area, owing to a large number of green spaces including Parkland walk.

History

Once a medieval route from London to the north of England, Crouch End, which was governed as part of Hornsey, was a mainly wooded area containing farms and villas, including Crouch Hall, built in the 17th century at the intersection of what came to be known as Crouch End. The area changed rapidly in the late 18th century from a largely rural area to a prosperous middle-class suburb, due to a sharp rise in professionals, including clerical workers moving to the area looking to commute into the city, thanks to the development of the railway in the area. Many of the old houses were demolished and replaced with housing aimed at the middle-class.

Housing Stock

With its vast array of both Edwardian and Victorian properties and the progressive emergence of modern high specification developments, Crouch End attracts many different types of property buyers and tenants, from professionals and families to first-time buyers and students. It is also very popular with buy-to-let investors. Property prices and rents reflect the predominately affluent area.

Shopping, food and drink

Crouch End offers an amazing array of shops, services, restaurants, bars and cafes, with a perfect blend of old and new. Shops on the Broadway include upmarket restaurants and supermarkets as well as numerous cafes and bars spilling out onto the pavements. There is also a long-standing baker, Dunn's, as well as two butchers, a fishmonger and a greengrocer. Whether one is looking for traditional English grub or somewhere that serves something a little more exotic, there is no shortage of gastropubs, elegant restaurants, wine bars and pubs to suit all tastes.

Recreational Grounds & Amenities

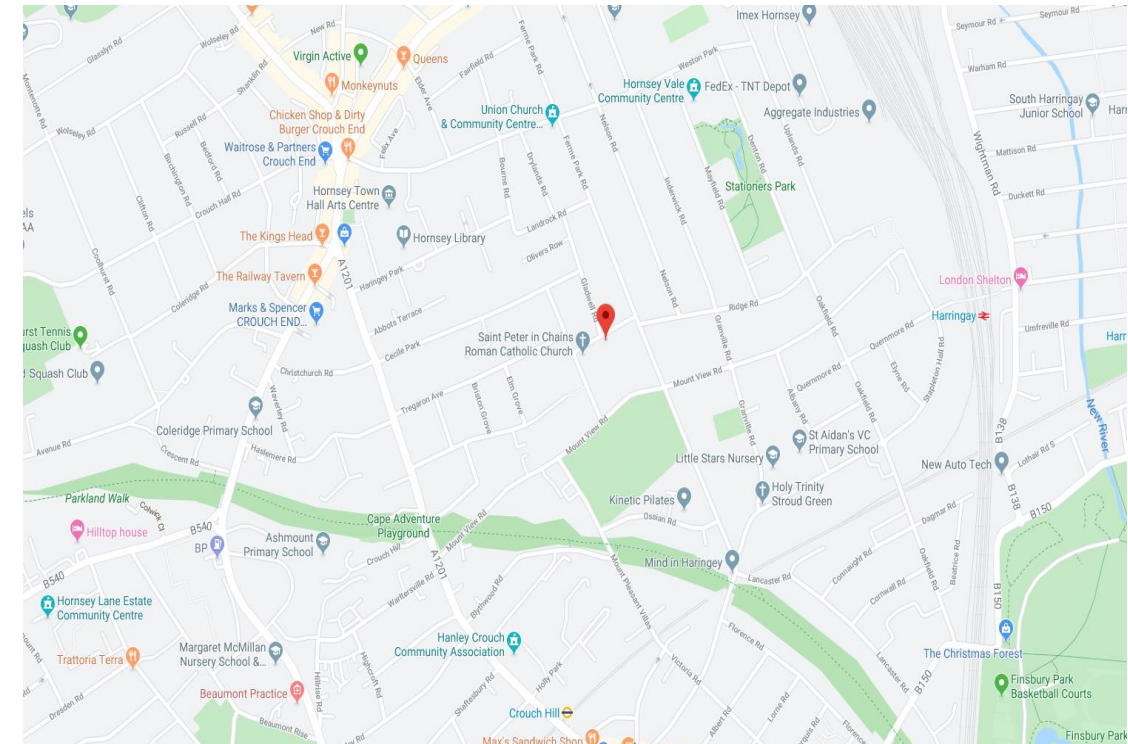
There are plenty of open green spaces in and around Crouch End, including Highgate Woods to the west, with Queen's Wood adjacent. Additionally, Alexandra Park is to the north of Crouch End, with Finsbury Park to the south. These two parks are connected by 'The Parkland Walk', a former railway line. Other parks in the area include Stationers Park and Priory Park. In addition there are a number of fitness centres, Tennis & Cricket clubs and Park Road swimming pool.

Emergency services

Crouch End is considered a safe neighbourhood. It is served by Highgate Police Station on Archway Road and Muswell Hill Police Station on Fortis Green. Hornsey Fire Station is located in Priory Road. There are a number of GP & Dental practices including The Christchurch Hall Surgery, Allenson House Medical Centre and The Beaumont Practice. The nearest hospital is The Whittington & University College Hospital.

Transportation

There are plenty of transport options in and around Crouch End. The nearest Tube and train stations are Highgate (Northern Line, Zone 3), Finsbury Park (Overground, Piccadilly & Victoria, Zone 2), Crouch Hill (Overground, Zone 3), Hornsey (Overground, Zone 3), Haringey (Overground, Zone 3) and Archway (Northern Line, Zone 2/3). Buses and night buses, including the 41, 91, 210, W3, W5, W7, N41 and N91, provide a good service to other parts of London.



Castles

12 Topsfield Parade, Crouch End

London N8 8PR

020 8348 5515

crouchend@castles.london

www.castles.london

All details including floorplans are for representation purposes only and do not constitute a contract or warranty. Whilst every effort is made to ensure accuracy of descriptions and measurements, no responsibility is taken for errors, omissions and misstatements.

rightmove
find your happy

Zoopla
Smarter property search

PrimeLocation
Find the home you deserve

onTheMarket.com

The Property
Ombudsman

A free, fair and independent service for buyers, sellers, tenants and landlords of property in the UK.

National Association of Estate Agents
LICENSED MEMBER
NAEA