



Castles

ASKING PRICE

£550,000

Steeplestone Close

London, N18 1JH

Castles



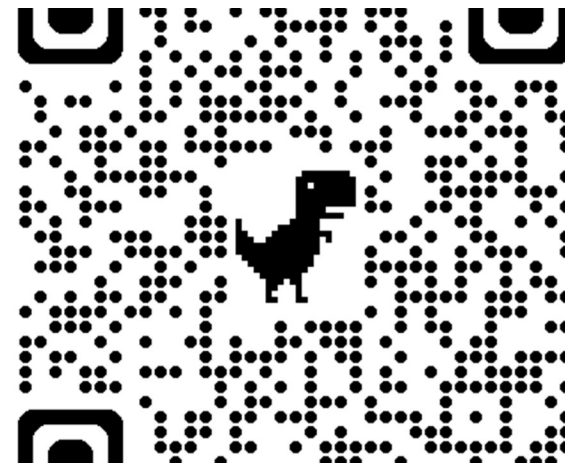
PROPERTY SUMMARY

This exceptionally spacious three bedroom family home boasts in excess of 1,229 sq ft approx. of versatile accommodation. It's move-in ready, yet offers ample opportunity for the buyer to add their own style and design. Benefitting from driveway, garage to rear and a south-westerly facing garden. Composed of an inviting reception hall, open plan lounge/dining room, ideal for entertaining and family living, additional reception room and a separate fitted kitchen. Upstairs, there are three bedrooms, a large family bathroom and huge loft space with potential to convert.

Well positioned on a residential cul de sac just off Pasteur Gardens and within a moments' walk from the highly regarded Oakthorpe Primary school and local bus routes, offering a fast and efficient route to Wood Green tube station (zone 3 Piccadilly Line).

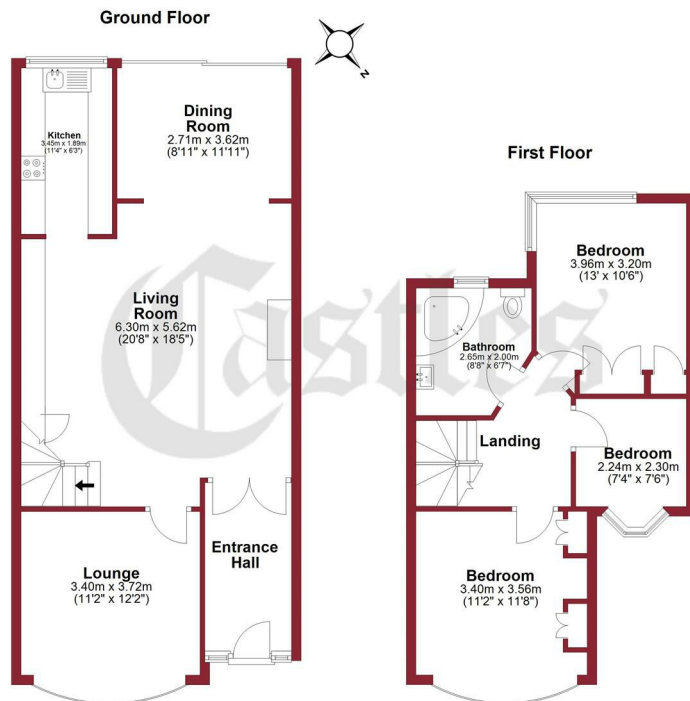




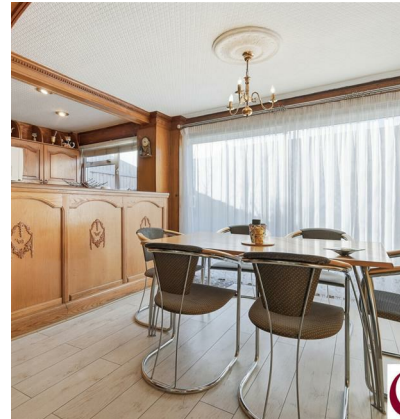




For a guide to the area  
please scan this code for  
more information



Total area: approx. 114.2 sq. metres (1229.5 sq. feet)  
All measurements have been taken as a guide to prospective buyers only and are not precise. This plan is for illustrative purposes only and no responsibility for any error, omission or misstatement.  
Plan produced using PlanUp.



House  
Freehold

**Council Tax Band: D**

Agents Note: Whilst every care has been taken to prepare these particulars, they are for guidance purposes only. All measurements are approximate and are for general guidance purposes only and whilst every care has been taken to ensure their accuracy, they should not be relied upon and potential buyers/tenants are advised to recheck the measurements



#### OFFICE ADDRESS

78 Green Lanes  
Palmers Green  
London  
N13 6BE

#### OFFICE DETAILS

020 8888 6081  
[www.castles.london](http://www.castles.london)

