

Castles

GUIDE PRICE

£550,000-£575,000

Pasteur Gardens

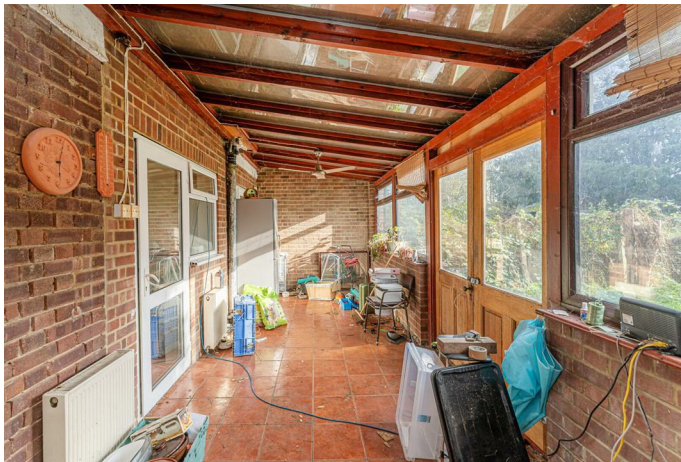
London, N18 1JL

PROPERTY SUMMARY

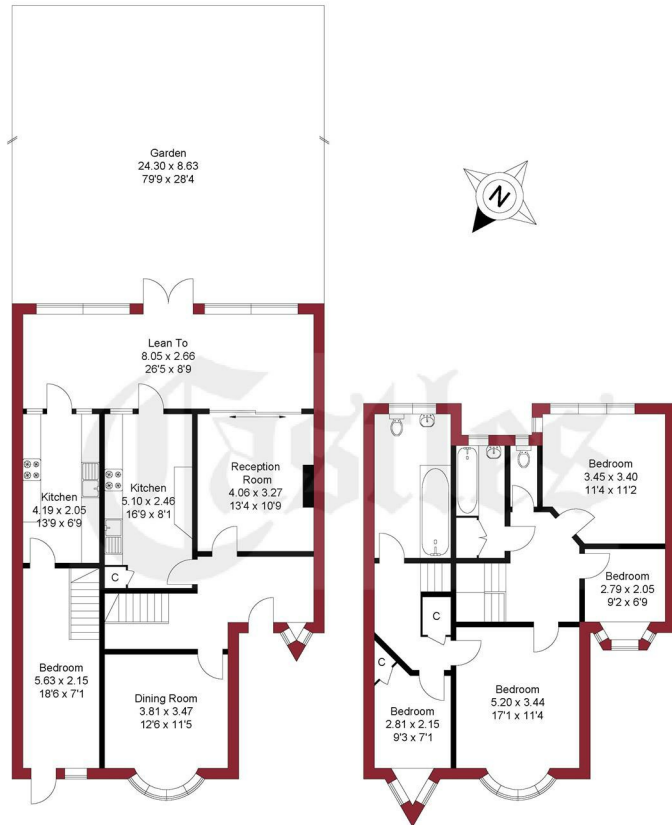
Guide Price £550,000-£575,000 Rare to the market, this Peter Dean-style three-bedroom, end of terraced family home, featuring an adjoining one/two-bedroom annex, ideal for growing or extended families. Alternatively, the layout offers the flexibility to combine both spaces to create one substantial five-bedroom residence. Though some modernisation is required, the home provides an exciting chance for buyers to update it to their own taste and truly maximise what it has to offer. The property also enjoys a generous 80 ft (Approx) south-facing garden and a versatile lean-to offering excellent potential for reconfiguration.

Superbly positioned on the borders of Palmers Green, the property is ideally located just a short walk from the highly regarded Oakthorpe Primary School. Excellent local bus services provide a fast and convenient connection to Wood Green tube station (Zone 3, Piccadilly Line).





APPROXIMATE GROSS INTERNAL AREA
166.89 sqm / 1796.38 sqft (Including Lean to)
143.91 sqm / 1549.03 sqft (Excluding Lean to)



GROUND FLOOR

FIRST FLOOR

THIS PLAN IS FOR ILLUSTRATION ONLY AND MAY NOT BE
REPRESENTATIVE OF THE PROPERTY

For a guide to the area
please scan this code for
more information



House

Freehold

Council Tax Band: E

Agents Note: Whilst every care has been taken to prepare these particulars, they are for guidance purposes only. All measurements are approximate and are for general guidance purposes only and whilst every care has been taken to ensure their accuracy, they should not be relied upon and potential buyers/tenants are advised to recheck the measurements



OFFICE ADDRESS

78 Green Lanes
Palmers Green
London
N13 6BE

OFFICE DETAILS

020 8888 6081
www.castles.london

