



Castles

OFFERS OVER

£399,950

Elstree Gardens

London, N9 8QY

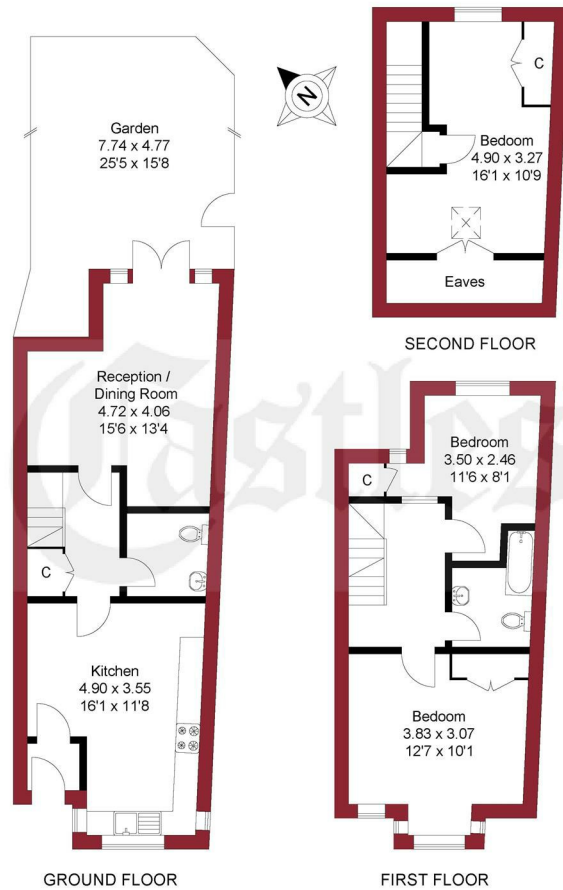
PROPERTY SUMMARY

A three bedroom newly built end of Terraced property situated within 1/2 mile of Edmonton Green N9 with its shops and transport links. The property comprises kitchen/dinner reception and WC to ground floor, with two bedrooms and bathroom to first floor and bedroom three on the second floor. It also has features to include, 25ft rear garden, double glazing and is offered for sale on a chain free basis.

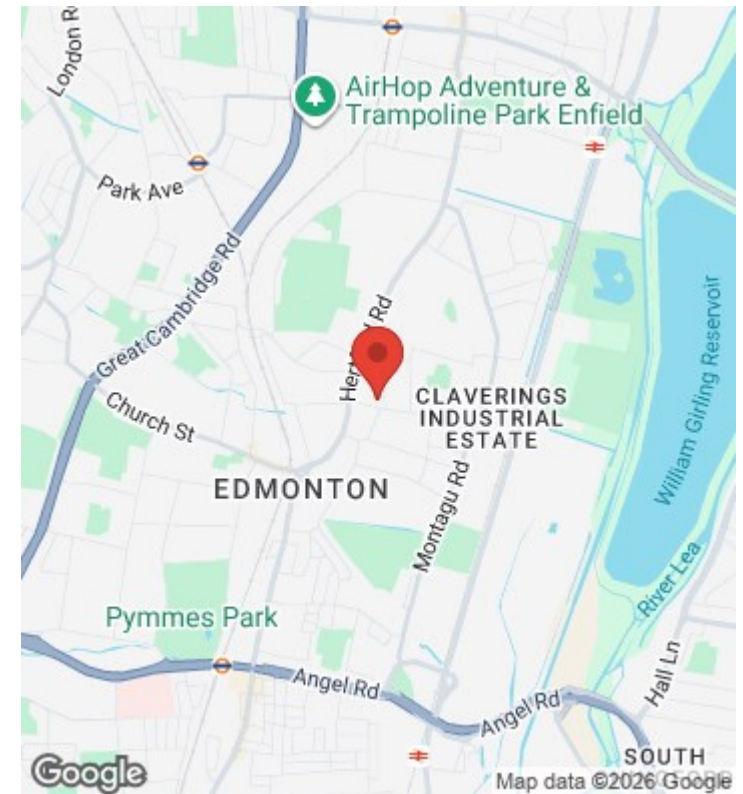




APPROXIMATE GROSS INTERNAL AREA
89.81 sqm / 966.70 sqft (Excluding Eaves)



A guide to the area



House - End Terrace

Freehold

Council:

Council Tax Band: E

Agents Note: Whilst every care has been taken to prepare these particulars, they are for guidance purposes only. All measurements are approximate and are for general guidance purposes only and whilst every care has been taken to ensure their accuracy, they should not be relied upon and potential buyers/tenants are advised to recheck the measurements



OFFICE ADDRESS

438 Hertford Road
Edmonton
London
N9 8AB

OFFICE DETAILS

020 8804 8123
edmonton@castles.london
<https://www.castles.london/>

