



# Castles

OFFERS IN EXCESS OF  
**£375,000**  
**Alston Road**  
London, N18 2LA



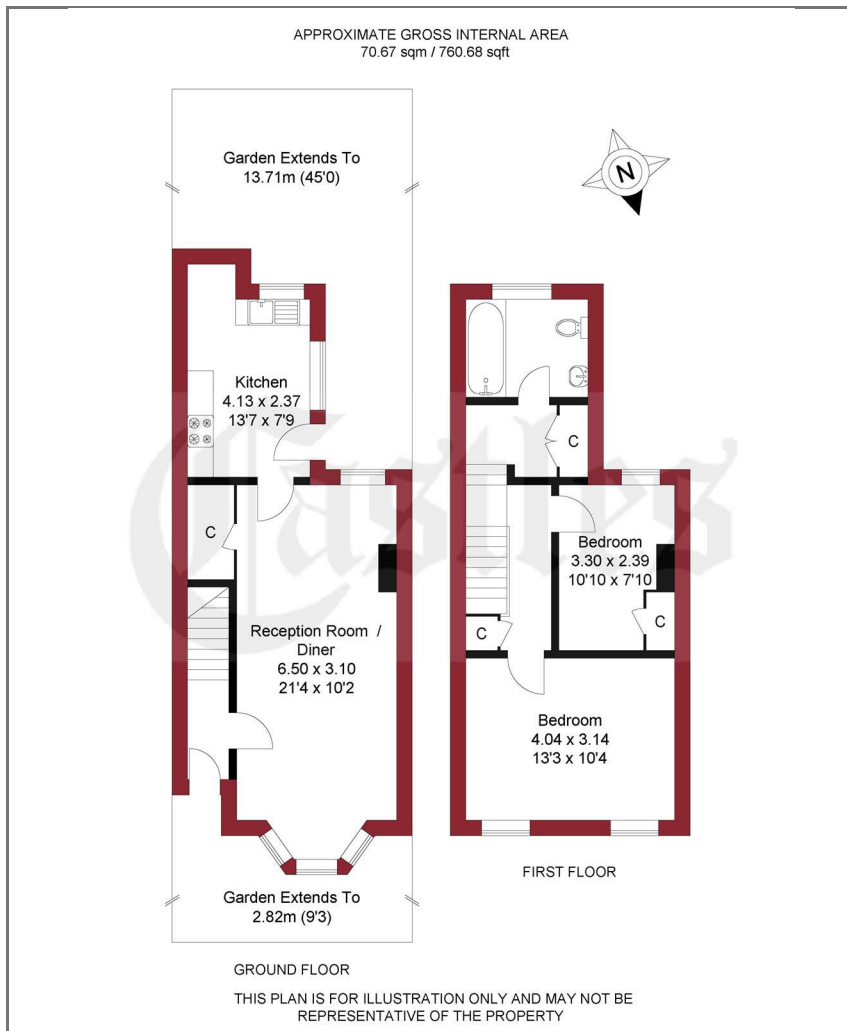
## PROPERTY SUMMARY

A two bedroom Victorian Terraced property situated which comprises of Reception and kitchen to ground floor with a further two bedrooms and bathroom to first floor. It also has features to include, 45ft rear garden, gas central heating, double glazing and is offered for sale on a chain free basis.

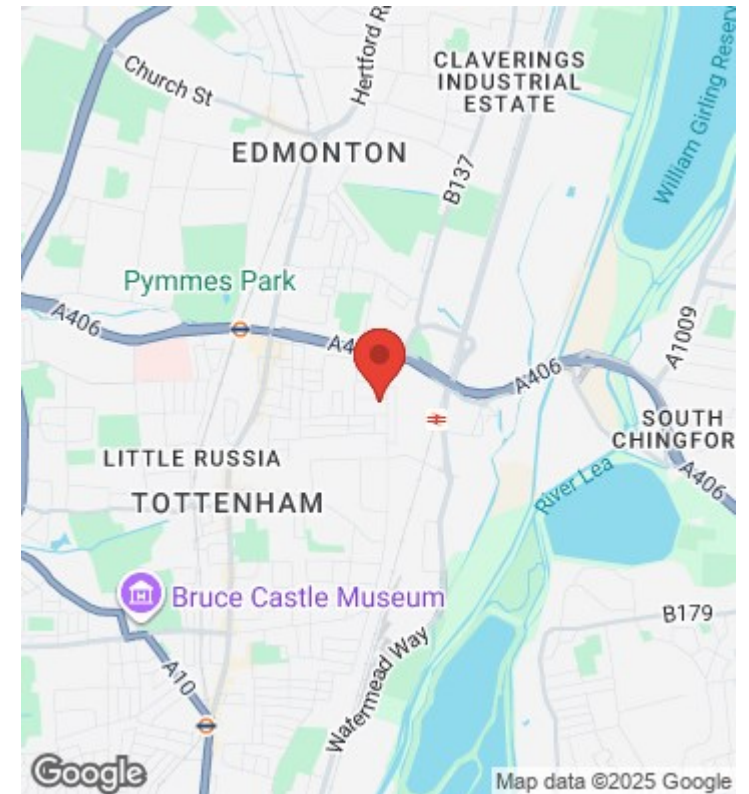








## A guide to the area



House

Freehold

**Council:**

**Council Tax Band: C**

Agents Note: Whilst every care has been taken to prepare these particulars, they are for guidance purposes only. All measurements are approximate and are for general guidance purposes only and whilst every care has been taken to ensure their accuracy, they should not be relied upon and potential buyers/tenants are advised to recheck the measurements



### OFFICE ADDRESS

438 Hertford Road  
Edmonton  
London  
N9 8AB

### OFFICE DETAILS

020 8804 8123  
edmonton@castles.london  
<https://www.castles.london/>

Energy Efficiency Rating		
	Current	Potential
Very energy efficient - lower running costs		
(92-100) A		
(81-91) B		87
(69-80) C		
(55-68) D		66
(39-54) E		
(21-38) F		
(1-20) G		
Not energy efficient - higher running costs		
England & Wales		
EU Directive 2002/91/EC		