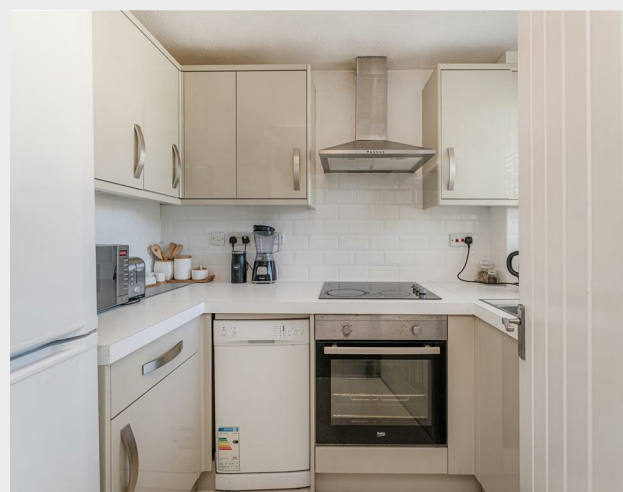


Hutton Court,, Edmonton, N9 8PQ  
Offers In Excess Of £174,950

Castles

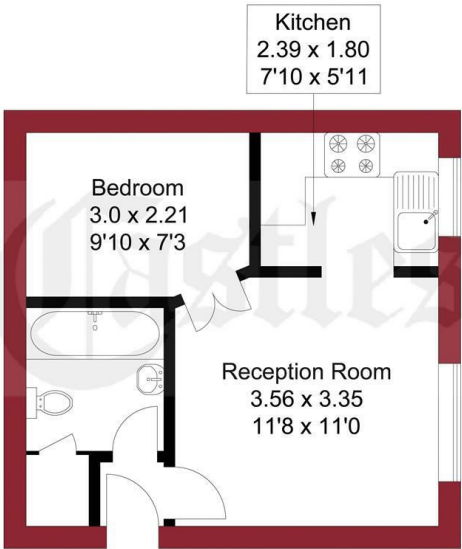


A top floor studio /one bedroom purpose built flat conveniently located within the heart of N9 Edmonton. The property comprises an reception/living room, double bedroom, three piece bathroom suite, modern fitted kitchen, additional storage available via loft space. Features include residents allocated parking (permit holders), intercom system, electric heating system, double glazing and chain free. Located only 0.8 miles from Edmonton Green Overground Station and 0.8 miles from Ponders End station. Viewing is recommended



438 Hertford Road  
Edmonton  
London  
N9 8AB  
020 8804 8123  
edmonton@castles.london  
www.propertysoftwaregroup.com

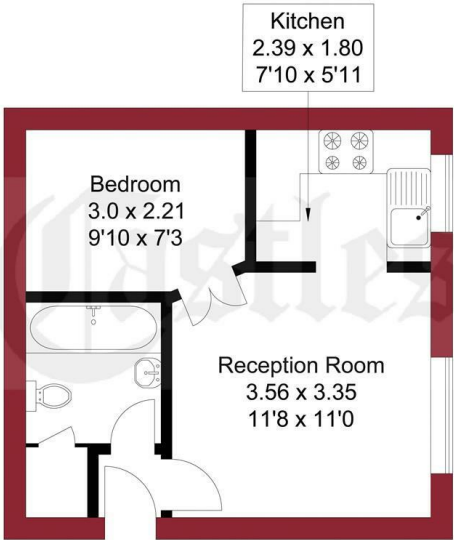
APPROXIMATE GROSS INTERNAL AREA  
30.0 sqm / 322.91 sqft



SECOND FLOOR

THIS PLAN IS FOR ILLUSTRATION ONLY AND MAY NOT BE REPRESENTATIVE OF THE PROPERTY

APPROXIMATE GROSS INTERNAL AREA  
30.0 sqm / 322.91 sqft



SECOND FLOOR

THIS PLAN IS FOR ILLUSTRATION ONLY AND MAY NOT BE REPRESENTATIVE OF THE PROPERTY

