

Hendon Road, Edmonton, N9 7AT
Offers In Excess Of £399,950

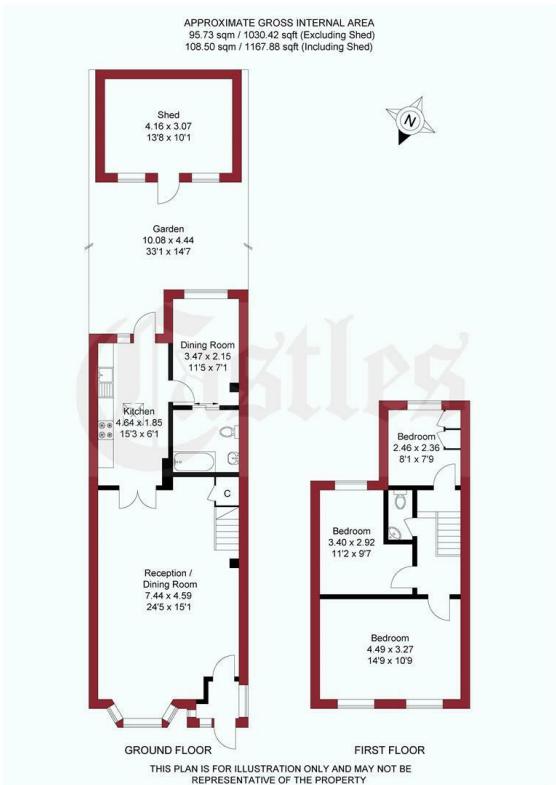
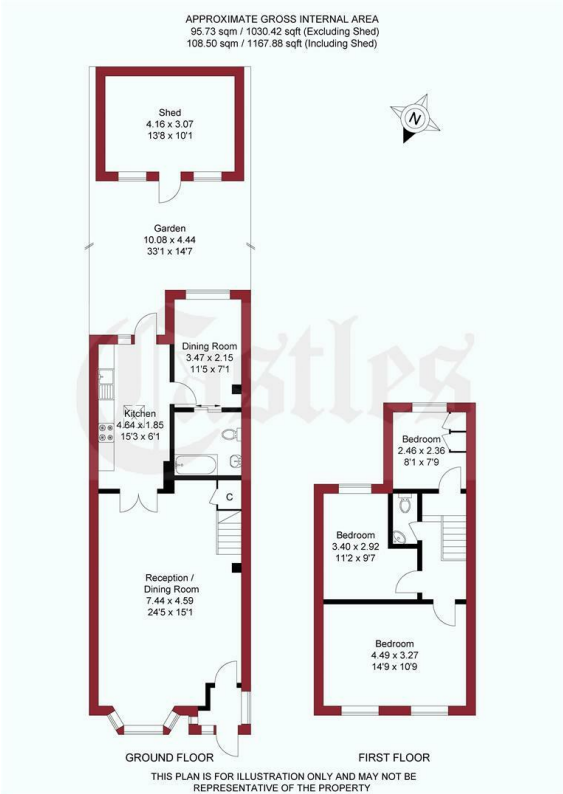
Castles



A three bedroom extended Victorian Property situated within 1/4 mile of Edmonton Green with its shops and transport links. The property comprises of two reception, kitchen and bathroom to ground floor with a further three bedrooms and WC to first floor. The property also has features to include, 33ft rear garden, gas central heating and is offered for sale on a chain free basis.



438 Hertford Road
Edmonton
London
N9 8AB
020 8804 8123
edmonton@castles.london
www.propertysoftwaregroup.com



Energy Efficiency Rating			Environmental Impact (CO ₂) Rating		
Very energy efficient - lower running costs			Very environmentally friendly - lower CO ₂ emissions		
(82 plus) A			(82 plus) A		
(61-81) B			(61-81) B		
(49-60) C			(49-60) C		
(39-48) D			(39-48) D		
(29-38) E			(29-38) E		
(21-28) F			(21-28) F		
(1-20) G			(1-20) G		
Not energy efficient - higher running costs			Not environmentally friendly - higher CO ₂ emissions		
England & Wales			England & Wales		
EU Directive 2002/91/EC			EU Directive 2002/91/EC		