



## 17 Whitehall Croft Leeds



## 1 Bedroom Flat £89,995

69 Lower Wortley Road  
Wortley  
Leeds  
West Yorkshire  
LS12 4SL  
Tel: 0113 231 1033  
Fax: 0113 203 8333

**Web Site**  
[www.kathwells.com](http://www.kathwells.com)

**email**  
[sales@kathwells.com](mailto:sales@kathwells.com)

# 17 Whitehall Croft, Lower Wortley, Leeds, West Yorkshire, LS12 5NJ

## GROUND FLOOR:

### Communal Entrance:

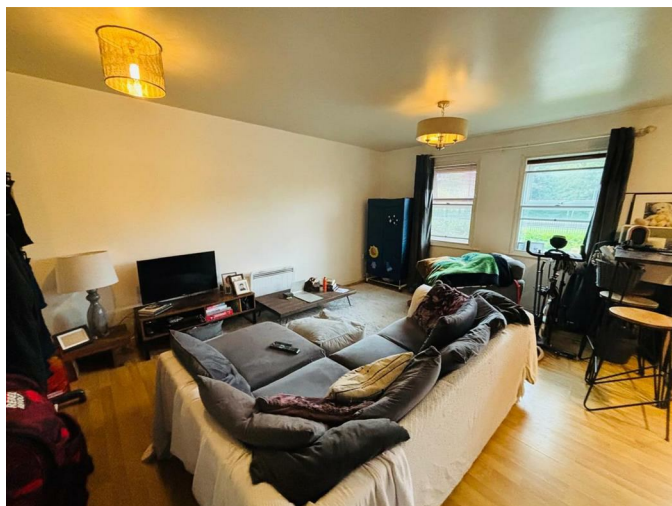


Access via communal entrance hallway with stairs to upper floors, intercom entry system

### Private Hallway:

Access to accommodation, electric panel radiator, storage cupboard

### Living / Dining Area:



Double glazed window, electric panel radiator, laminated flooring, ample space for living room and dining room furniture

### Fitted Kitchen:



Double glazed window, a range of fitted wall drawer & base units, work surfaces, built under oven / grill electric hob, extractor hood above, inset sink and drainer, plumbing for an automatic washing machine, space for fridge / freezer

### Bedroom One:



Double glazed window, electric panel radiator, fitted wardrobes

### Bathroom / WC:

Double glazed window, electric panel radiator / towel warmer, three piece white suite comprising of a panelled bath with electric shower over, wash basin, low flush WC



TO THE OUTSIDE:



Communal Gardens:



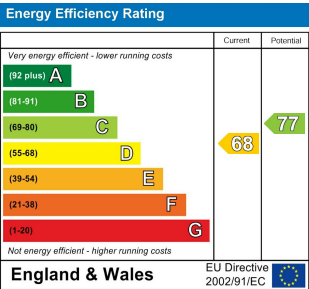
Parking Space and Gardens.:

EPC link:

<https://find-energy-certificate.service.gov.uk/energy-certificate/8305-7244-7429-5826-0313>

EPC rating & Council tax:

Council Tax Band: A / EPC Rating: D



**Floor Plan**