

1 Hayleigh Mount Leeds



3 Bedroom House - Back to Back £149,995

69 Lower Wortley Road
Wortley
Leeds
West Yorkshire
LS12 4SL
Tel: 0113 231 1033
Fax: 0113 203 8333

Web Site
www.kathwells.com

email
sales@kathwells.com

1 Hayleigh Mount, Bramley, Leeds, West Yorkshire, LS13 3NR

Bedroom One:

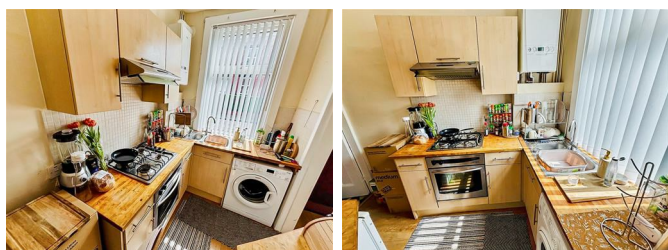
GROUND FLOOR:

Living Room:



Access via a front entrance door, double glazed window, a wall mounted modern fire place, central heating radiator, television point, laminated flooring, stairs rising to the first floor

Fitted Kitchen:



Double glazed window, a range of fitted wall, drawer & base units, work surfaces, an inset 1 1/4 bowl sink and drainer, built under electric oven / grill, four burner gas hob, extractor hood, plumbing for an automatic washing machine, space for a fridge / freezer, access to the cellars / basement

Cellars / Basement:

A useful storage area with power and light

FIRST FLOOR:

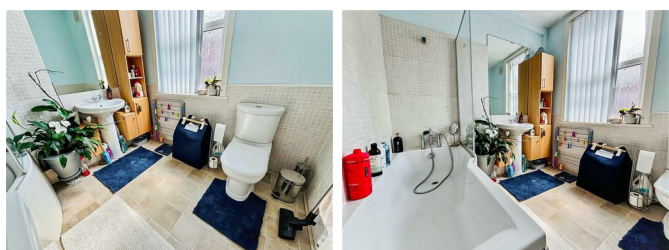
Landing:

Access to the first floor accommodation, stairs rising to the second floor



Double glazed window, central heating radiator, ample space for a range of bedroom furniture

Bathroom / WC:



Double glazed window, a modern white suite comprising of a shower bath with a glazed side screen and shower mixer taps, wash basin, low flush WC, central heating radiator

SECOND FLOOR:

Landing:

Access to the second floor accommodation, ample storage space

Bedroom Two:



Double glazed window, central heating radiator

Bedroom Three:



Double glazed window, central heating radiator

TO THE OUTSIDE:



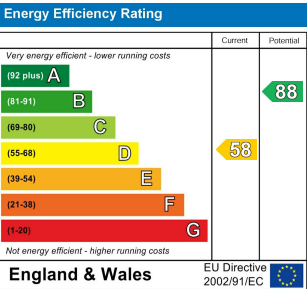
The property is street fronted

EPC Rating & Council Tax:

EPC Rating: D / Council Tax: A

EPC Link:

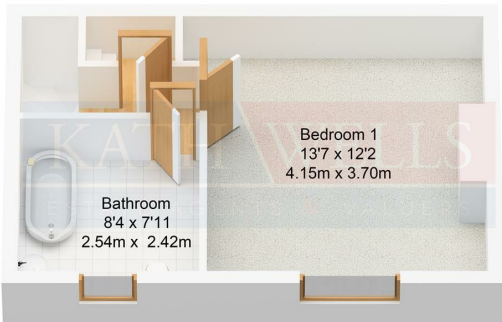
<https://find-energy-certificate.service.gov.uk/energy-certificate/1737-4028-4300-0300-0272>



Floor Plan



Ground Floor
Approx. 26.49 sqm.
(285.13 sqft.)



First Floor
Approx. 26.49 sqm.
(285.13 sqft.)



Second Floor
Approx. 26.49 sqm.
(285.13 sqft.)