

16 Station Mount Leeds



3 Bedroom House - Back to Back £150,000

69 Lower Wortley Road
Wortley
Leeds
West Yorkshire
LS12 4SL
Tel: 0113 231 1033
Fax: 0113 203 8333

Web Site
www.kathwells.com

email
sales@kathwells.com

16 Station Mount, Bramley, Leeds, West Yorkshire, LS13 3QE

Landing:

GROUND FLOOR:

Living Room:



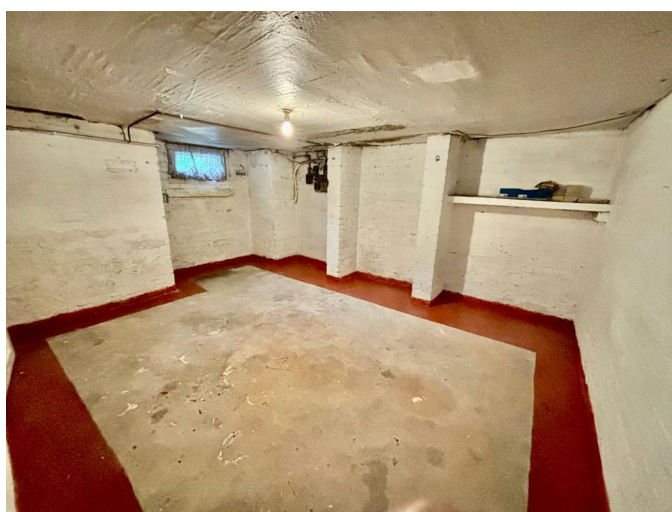
Access via a part glazed front entrance door, double glazed window, a fireplace and hearth with an inset living flame coal effect fire, ceiling coving, ample space for a range of living room furniture and a dining table, stairs rising to the first floor

Fitted Kitchen:



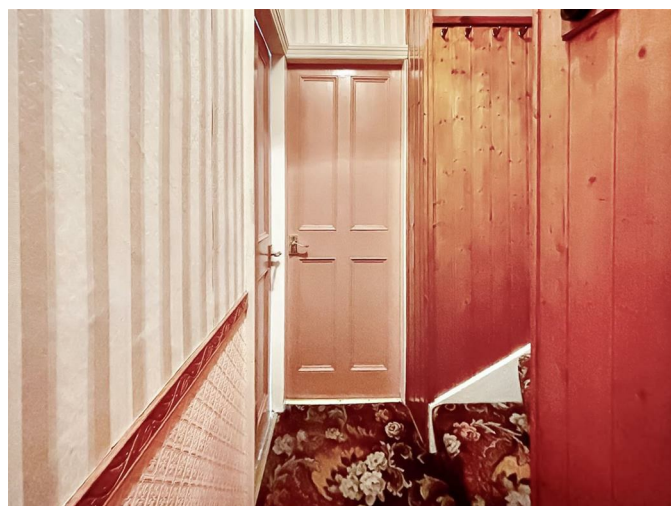
Double glazed window, a range of fitted base and drawer units, work surfaces, gas cooker point, an inset stainless steel sink and drainer with a mixer tap, plumbing for an automatic washing machine, space for a fridge / freezer, access to the cellars / basement

Basement / Cellars:



Window, a good sized space which could possibly be converted to provide additional living space (subject to planning and building regulation approval)

FIRST FLOOR:



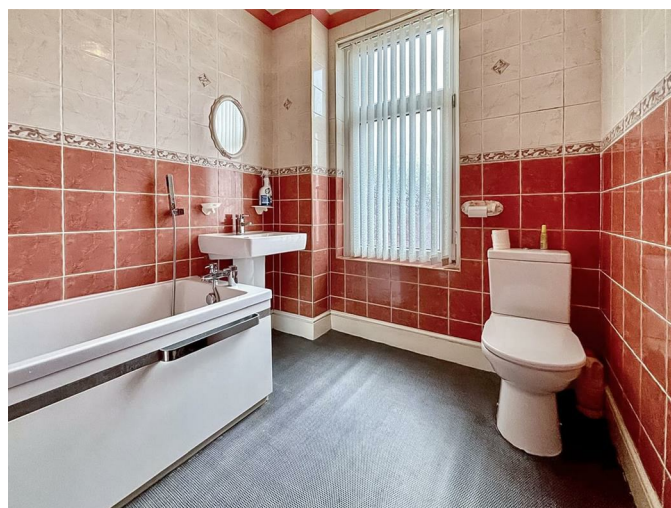
Access to the first floor accommodation, stairs rising to the second floor

Bedroom One:



Double glazed window, a good sized double bedroom with ample space for a range of bedroom furniture, an original Victorian fireplace

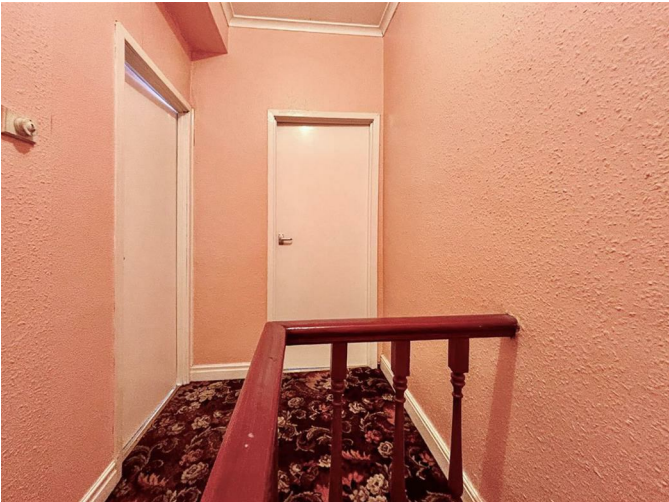
Bathroom / WC:



Double glazed window, a modern white suite comprising of a panelled bath with shower mixer taps, a wash basin, low flush WC

SECOND FLOOR:

Landing:



Access to the second floor accommodation

Bedroom Two:



Double glazed window, a good sized second bedroom

Bedroom Three:



Double glazed window, a good sized third bedroom

TO THE OUTSIDE:



Garden:



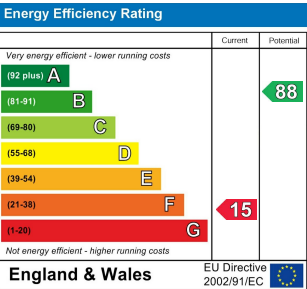
A pleasant front garden enclosed by a low wall and hedge. A wrought iron garden gate gives access to a paved seating area with planted beds containing a variety of ornamental shrubs and plants

EPC Link:

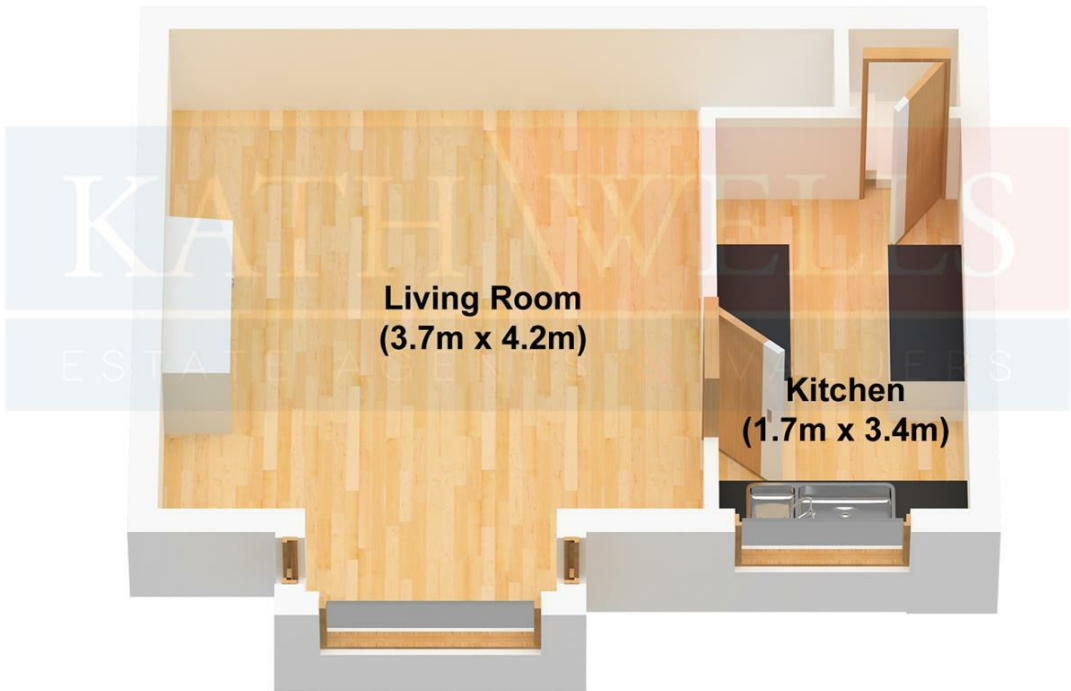
tba

Council Tax Band & EPC Rating:

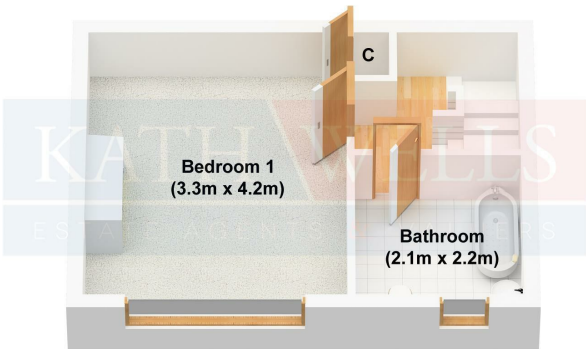
Council Tax Band: A / EPC Rating: G



Ground Floor



First Floor



Second Floor

