

14 Roseneath Terrace Leeds



2 Bedroom House - Terraced £149,995

69 Lower Wortley Road
Wortley
Leeds
West Yorkshire
LS12 4SL
Tel: 0113 231 1033
Fax: 0113 203 8333

Web Site
www.kathwells.com

email
sales@kathwells.com

14 Roseneath Terrace, Wortley, Leeds, West Yorkshire, LS12 4DZ

GROUND FLOOR:

Entrance:

Access via a part glazed front entrance door, vertical central heating radiator

Living Room:



Double glazed window, wall mounted electric fire, television point with connections for SKY TV, stairs rising to the first floor

Fitted Breakfast Kitchen:



Double glazed window, a modern range of fitted wall, drawer & base units, work surfaces, an electric oven / grill, electric hob, extractor hood, space for a fridge / freezer, plumbing for an automatic washing machine, an inset sink and drainer, access to the cellars

Basement:



A useful storage area with power and light

FIRST FLOOR:

Landing:

Access to the first floor accommodation, stairs rising to the second floor

Bedroom One:



A good sized double bedroom, double glazed window, central heating radiator

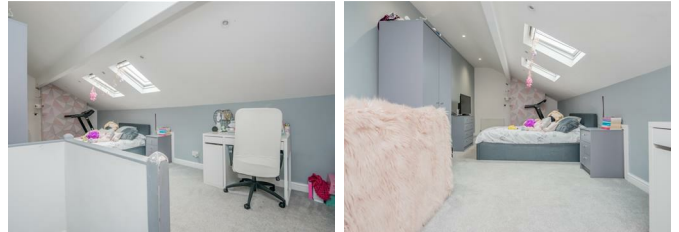
Bathroom / WC:



Double glazed window, a modern four piece suite comprising of a panelled bath, low flush WC, walk-in shower cubicle with a 'spa-jet' shower, wash basin, ladder style central heating radiator / towel warmer

SECOND FLOOR:

Bedroom Two:



Two double glazed Velux windows, storage to the eaves, central heating radiator

TO THE OUTSIDE:

Garden:



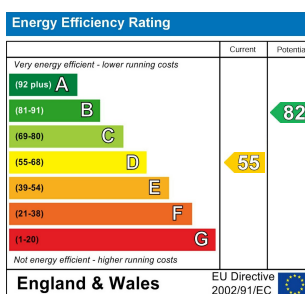
An enclosed low maintenance front garden

EPC Link:

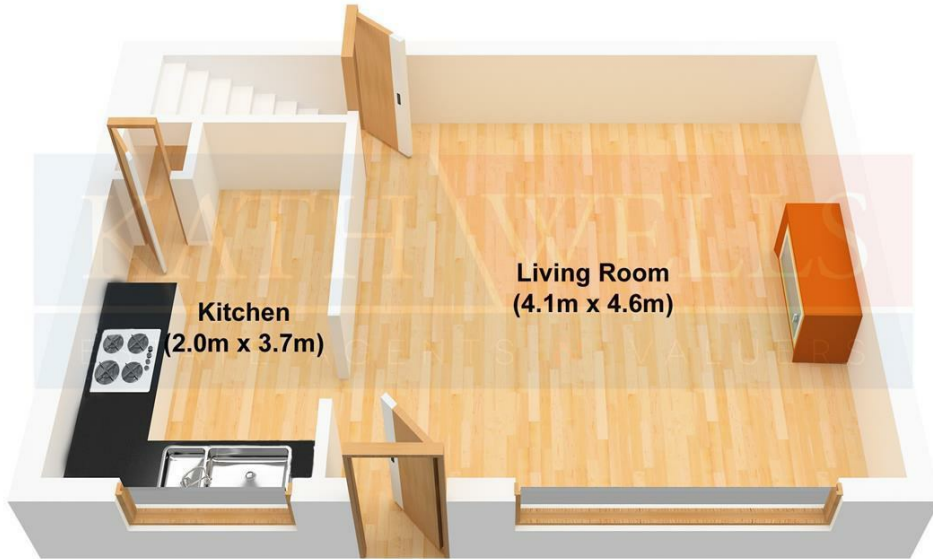
<https://find-energy-certificate.service.gov.uk/energy-certificate/1802-3264-7002-0196-7606?print=tru>

EPC Rating / Council Tax Band

EPC Rating: D / Council Tax Band: A



Ground Floor



First Floor



Second Floor

