

**47 Fawcett Lane  
Leeds**



**4 Bedroom House  
£325,000**

69 Lower Wortley Road  
Wortley  
Leeds  
West Yorkshire  
LS12 4SL  
Tel: 0113 231 1033  
Fax: 0113 203 8333

**Web Site**  
[www.kathwells.com](http://www.kathwells.com)

**email**  
[sales@kathwells.com](mailto:sales@kathwells.com)

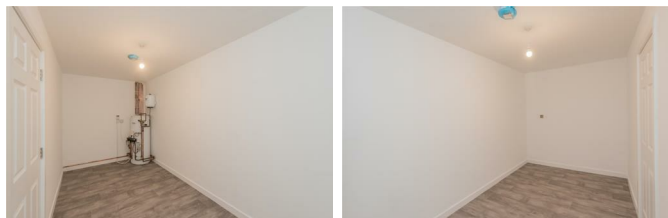
# 47 Fawcett Lane, Wortley, Leeds, West Yorkshire, LS12 4PE

## GROUND FLOOR:

### Hallway:

A spacious hallway with stairs to the first and lower ground floors

### Store Room:

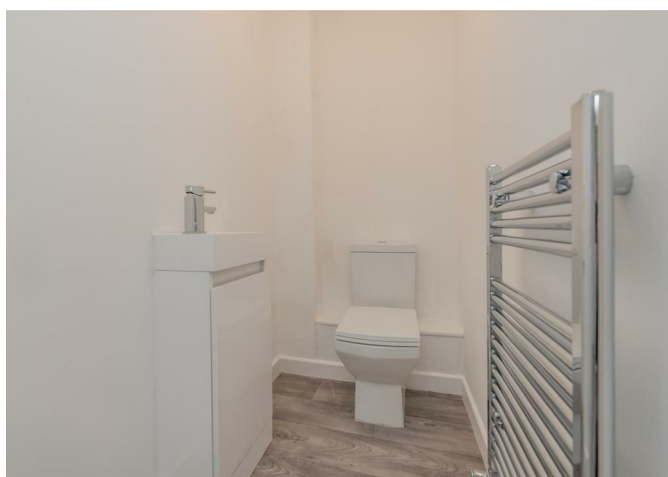


A useful storage area

### Study:

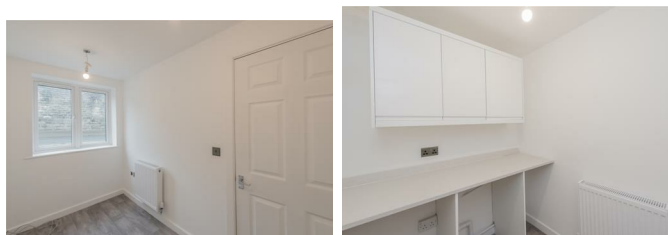
Double glazed window, ample space for use as a study / home office

### Cloakroom / WC:



A modern white suite comprising of a low flush WC and a wash basin

### Utility Room / Store:



A useful storage area

## Living Room:



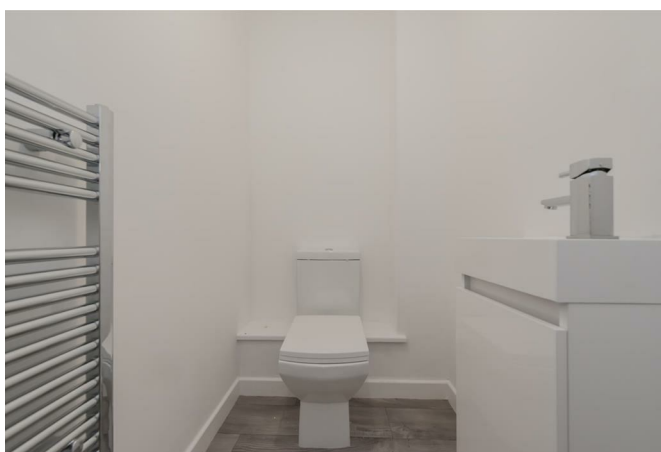
Double glazed window with views over the valley, a good sized space with ample room for furniture

## LOWER GROUND FLOOR:

### Hallway:

Access to the lower ground floor accommodation, under-stairs storage cupboard

### Cloakroom / WC:



A modern white suite comprising of a low flush WC and a wash basin

### Utility / Store Room:

A range of fitted cabinets, plumbing for an automatic washing machine, space for a tumble dryer

### Fitted Dining Kitchen:



Double glazed bi-fold doors opening onto the rear garden, ample space for a dining table and chairs, a modern range of fitted wall, drawer & base units, work surfaces, an inset sink and drainer, electric hob, electric oven, extractor hood, integral fridge / freezer, integral dishwasher

## FIRST FLOOR:

### **Landing:**

Access to the first floor accommodation, stairs to the second floor

### **Master Bedroom:**



Double glazed window, double glazed doors opening onto a 'Roof Terrace' / balcony, fitted wardrobes, ample space for bedroom furniture

### **En- Suite Shower Room / WC:**



A modern white suite comprising of a low flush WC, wash basin, shower cubicle with shower

### **Bedroom Two:**



Double glazed window, fitted wardrobes, ample space for bedroom furniture

### **Family Bathroom/ WC:**



A modern white suite comprising of a low flush WC, wash basin, panelled bath

### **SECOND FLOOR:**

#### **Landing:**

Access to the second floor accommodation

#### **Bedroom Three:**



Double glazed windows, fitted wardrobes, ample space for bedroom furniture

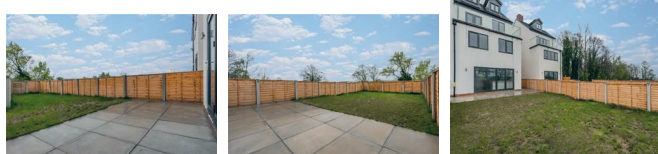
#### **Bedroom Four:**



### **TO THE OUTSIDE:**



## **Gardens:**



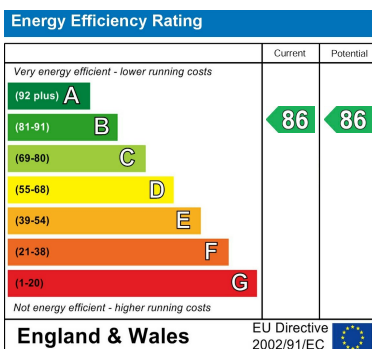
The front garden is mainly open plan. The rear garden is enclosed by fencing

## **Parking:**

A driveway provides useful off street parking

## **EPC LINK:**

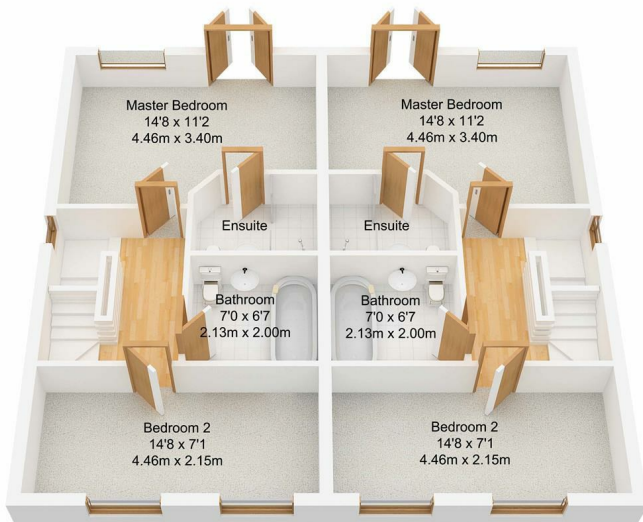
## Energy Efficiency Graph



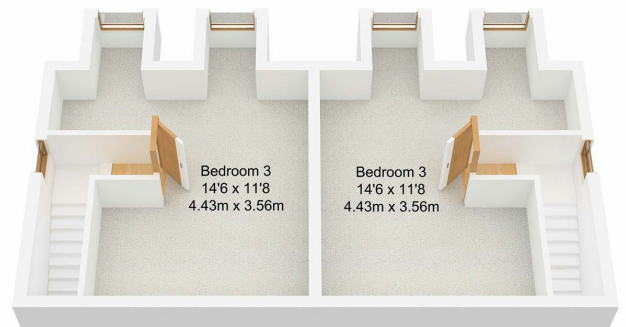
# Floor Plan



**Ground Floor**  
Approx. 100.09 sqm.  
(1077.36 sqft.)



**First Floor**  
Approx. 79.52 sqm.  
(855.94 sqft.)



**Second Floor**  
Approx. 44.80 sqm.  
(482.22 sqft.)