



**CPH** ESTATE AGENTS &  
CHARTERED SURVEYORS  
*For over 30 years*

**5 Crown Terrace, Scarborough**  
Offers in Region of **£340,000**





## 5 Crown Terrace

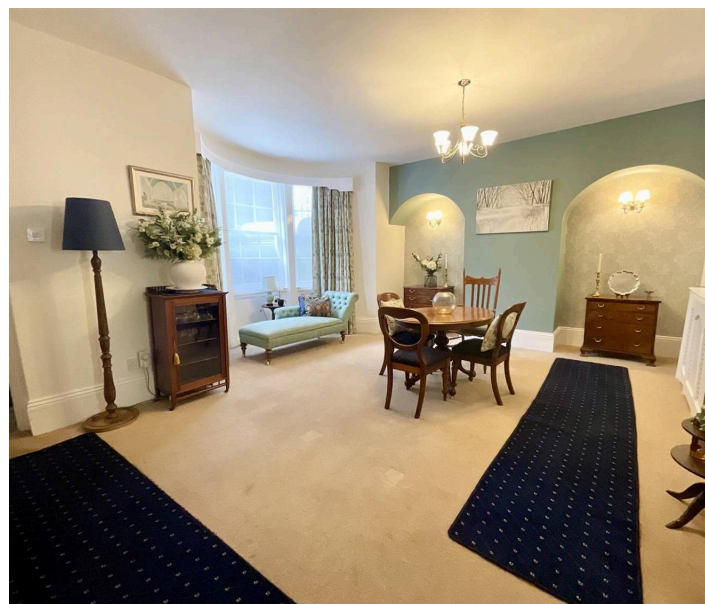
Scarborough, Scarborough

- Beautifully Presented Characterful Grade 2 listed Georgian Townhouse
- Located On a tree lined street with Open gardens opposite
- Six bedrooms
- Pleasant Sunny rear Courtyard
- Two Bathrooms
- Three Reception Room
- Offered with no Onward Chain, Viewing is a must

+++CPH are delighted to be presenting to the market this SUBSTANTIAL PERIOD SIX BEDROOM TERRACED HOME which is well laid out over FOUR FLOORS with TWO RECEPTION ROOMS, STUDY, CLOAKROOM, DOWNSTAIRS WC AND A REAR MEDITERRANEAN STYLE COURTYARD. THE PROPERTY IS GRADE 2 LISTED AND LOCATED ON AN ENVIABLE TREE LINED TERRACE OVER-LOOKING PLEASANT OPEN PUBLIC GARDENS. ONE OF THE FEW REMAINING CHARACTER PROPERTIES, VIEWING IS A MUST+++

The internal living accommodation comprises in brief on the ground floor; entrance vestibule and hallway with stairs to the first floor, a bay fronted living room, a separate study, handy WC and cloakroom. Stairs lead down to the lower ground floor where a bay fronted Dining room can be found along with wine cellar area and then to the rear a generous Dining Kitchen fitted with a range of units with door which leads out to a sunny rear low maintenance courtyard with garden shed. To the first floor of the property lies a landing with further stairs to the second floor, Two double bedrooms including master bedroom, a walk in wardrobe and the house bathroom which serves this floor. To the second floor landing lie four further double bedrooms and a shower room.

The property occupies an enviable position on a popular tree lined Avenue close to the Esplanade, near to a wealth of amenities and attractions including the Italian Gardens, Clock







## Accommodation

### Ground Floor

Entrance Vestible Dimensions: 2.4 x 1.3 (7'10" x 4'3").

Entrance Hall Dimensions: 6.1 x 2.0 (20'0" x 6'6").

Lounge Dimensions: 5.2 x 4.7 (17'0" x 15'5").

Cloakroom Dimensions: 2.6 x 1.8 (8'6" x 5'10").

WC Dimensions: 2.5 x 1.9 (8'2" x 6'2").

Study Dimensions: 3.9 x 3.5 (12'9" x 11'5").

### First Floor

First Floor Landing Dimensions: 4.7 x 2.1 (15'5" x 6'10").

Master Bedroom Dimensions: 6.1 x 5.2 (20'0" x 17'0").

Walk in wardrobe Dimensions: 1.7 x 1.3 (5'6" x 4'3").

Bedroom Two Dimensions: 4.0 x 3.7 (13'1" x 12'1").

House Bathroom Dimensions: 3.9 x 2.3 (12'9" x 7'6").

### Second Floor

Second Floor Landing Dimensions: 4.6 x 2.1 (15'1" x 6'10").

Bedroom Three Dimensions: 4.2 x 3.7 (13'9" x 12'1").

Bedroom Four Dimensions: 4.2 x 2.2 (13'9" x 7'2").

Bedroom Five Dimensions: 3.9 x 2.6 (12'9" x 8'6").

Bedroom Six Dimensions: 3.9 x 3.6 (12'9" x 11'9").

Shower Room Dimensions: 2.1 x 1.3 (6'10" x 4'3").

### Lower Ground Floor

Lower ground floor lobby Dimensions: 3.4 x 2.2 (11'1" x 7'2").

Dining Kitchen Dimensions: 6.1 x 5.1 (20'0" x 16'8").

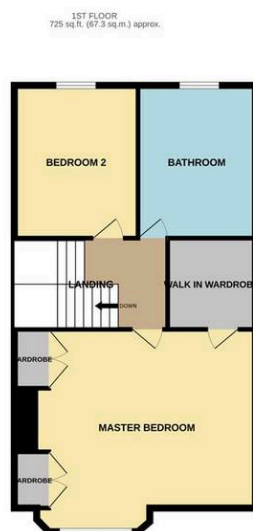
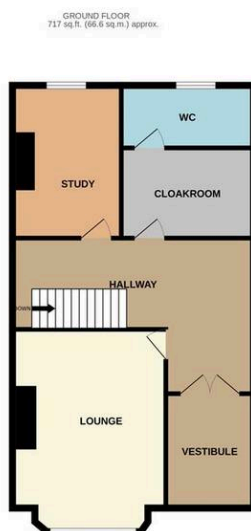
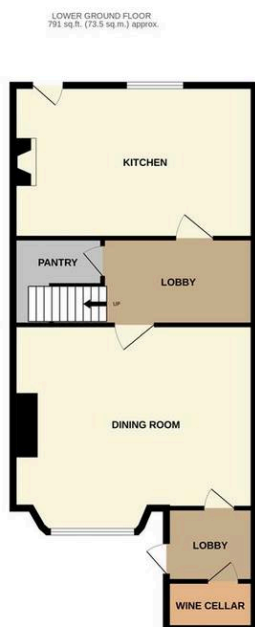
Pantry/ Utility Dimensions: 2.5 x 2.1 (8'2" x 6'10").

Dining Room Dimensions: 6.1 x 5.1 (20'0" x 16'8").

Front Lobby with external entrance door Dimensions: 2.1 x 1.3 (6'10" x 4'3").







TOTAL FLOOR AREA : 2931 sq.ft. (272.3 sq.m.) approx.

Whilst every attempt has been made to ensure the accuracy of the floorplan contained here, measurements of doors, windows, rooms and any other items are approximate and no responsibility is taken for any error, omission or mis-statement. This plan is for illustrative purposes only and should be used as such by any prospective purchaser. The services, systems and appliances shown have not been tested and no guarantee as to their operability or efficiency can be given.  
Made with Metropix ©2024

*Interested?*

Contact our friendly team today

☎ 01723 352235 | ✉ sales@cphproperty.co.uk

With you every step of the way



**Sales, Lettings & Commercial**

ESTATE AGENTS & CHARTERED SURVEYORS

19 St. Thomas Street, Scarborough YO11 1DY



rightmove Zoopla.co.uk PrimeLocation.com

NOTE: These particulars are intended only as a guide to prospective Purchasers to enable them to decide whether to make further enquiries with a view to taking up negotiations but they are otherwise not intended to be relied upon in any way for any purpose whatsoever and accordingly neither their accuracy nor the continued availability of the property is in any way guaranteed and they are furnished on the express understanding that neither the Agents nor the Vendors are to be or become under any liability or claim in respect of their contents. Any prospective Purchaser must satisfy himself by inspection or otherwise as to the correctness of the particulars contained. C132