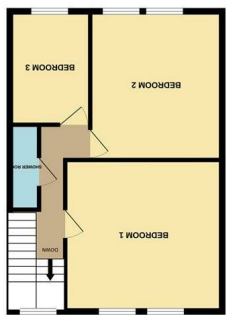
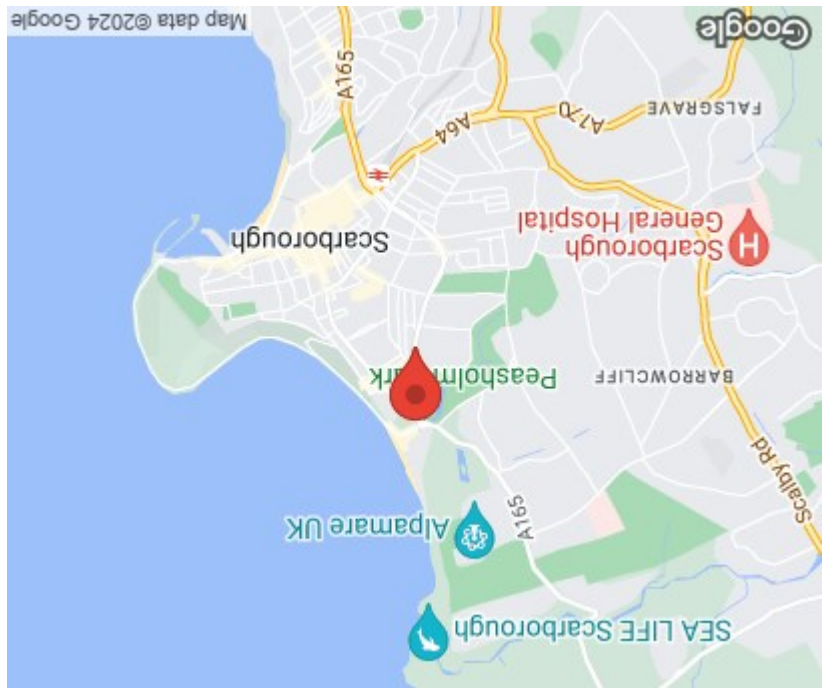


NOTE: These particulars are intended only as a guide to prospective Purchasers to enable them to decide whether to make further enquiries with a view to taking up negotiations but they are otherwise not intended to be relied upon in any way for any purpose whatsoever and accordingly neither their accuracy nor the continued availability of the property is in any way guaranteed and they are furnished on the express understanding that neither the Agents nor the Vendors are to be or become under any liability or claim in respect of their contents. Any prospective Purchaser must satisfy himself by inspection or otherwise as to the correctness of the particulars contained. C132

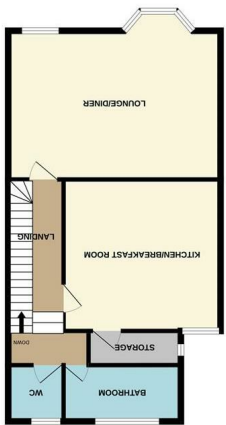


England & Wales	
EU Directive 2002/91/EC	
Very environmentally friendly - lower CO ₂ emissions	(92 plus) A
	(81-91) B
	(69-80) C
	(55-68) D
	(39-54) E
	(21-38) F
Not environmentally friendly - higher CO ₂ emissions	(1-20) G
Current	Potential

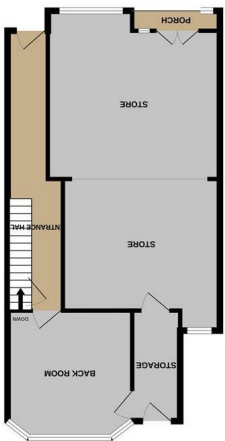
England & Wales	
EU Directive 2002/91/EC	
Very energy efficient - lower running costs	(92 plus) A
	(81-91) B
	(69-80) C
	(55-68) D
	(39-54) E
	(21-38) F
	(1-20) G
Current	Potential



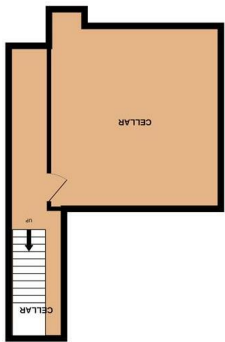
512 sq.ft. (47.8 sq.m.) approx.
 2ND FLOOR



646 sq.ft. (60.0 sq.m.) approx.
 1ST FLOOR



678 sq.ft. (63.2 sq.m.) approx.
 GROUND FLOOR



265 sq.ft. (24.5 sq.m.) approx.
 CELLAR

Whilst every attempt has been made to ensure the accuracy of the floorplan contained here, measurements of doors, windows, rooms and any other items are approximate and no responsibility is taken for any error, omission or mis-statement. This plan is for illustrative purposes only and should be used as such by any prospective purchaser. The services, systems and appliances shown have not been tested and no guarantee as to their operation or efficiency can be given.
 Made with Metropix ©2024

TOTAL FLOOR AREA: 2204 sq.ft. (204.8 sq.m.) approx.