



**Barge Arm, Gloucester Docks GL1 2DN**  
**£155,000**





## Barge Arm, Gloucester Docks GL1 2DN

• No onward chain • One double bedroom second floor apartment • Open plan living & kitchen accommodation • South facing views across the Orchard Square & Inlet Canal • Secure allocated parking space • Potential rental income of £850 pcm • EPC rating B82 • Gloucester City Council - Tax Band B (£1,741.26 per annum) 2025/2026



Unit C Barge Arm East, Gloucester Docks, GL1 2DQ

01452 398010

docks@naylorpowell.com

www.naylorpowell.com

**£155,000**

### Entrance Hallway

Hallway provides access to a built-in storage cupboard, with plumbing for an automatic washing machine, living room, bedroom and bathroom.

### Living Room

Generous sized living room with convenient space for a dining table if required whilst providing stunning waterside views over the inlet canal and across the Orchard Square. The room opens through to the kitchen.

### Kitchen

The kitchen benefits from ample worktop and storage space with integrated appliances to include fridge, freezer, dishwasher, hob and oven.

### Bedroom

Double bedroom with a continuation of the views over the inlet canal and across the Orchard Square.

### Bathroom

White suite bathroom comprising w.c, wash hand basin and bath with shower attachment over.

### Outside

An allocated parking space for the apartment is secured in the gated complex within the Barge Arm East building a short walk from the apartment. The building is accessed via keyless fob entry system where access to the ground floor is provided where the apartment is located.

### Location

To the south of the main docks area is the Gloucester Quays designer outlet centre, which has an outstanding mix of high

street and designer labels, with an array of eateries and waterfront bars and short distance from the local Sainsburys supermarket. Moving into the historic City, you will find Gloucester Cathedral and a number of independent shops and boutiques, the newly renovated bus station providing regular services to all surrounding suburbs, alongside a direct line to London Paddington from the train station a short 1.5 miles distance away.

### Material Information

Tenure: Leasehold of 200 years (less 20 days) from 1st January 1992. Managed by Ash & Co at an approximate charge of £2,050.00 per annum for the year ending 2025. (Part covers normal shared building maintenance, management and insurances; just over 40% covers Docks Service Charge (DSC) including security, CCTV, cleaning and maintenance for the private Docks estate, operated by GDECL).

\*Information correct as of 13/05/25\*

Local authority and rates: Gloucester City Council - Tax Band B (£1,741.26 per annum) 2025/2026

Electricity supply: Mains

Water supply: Mains

Sewerage: Mains

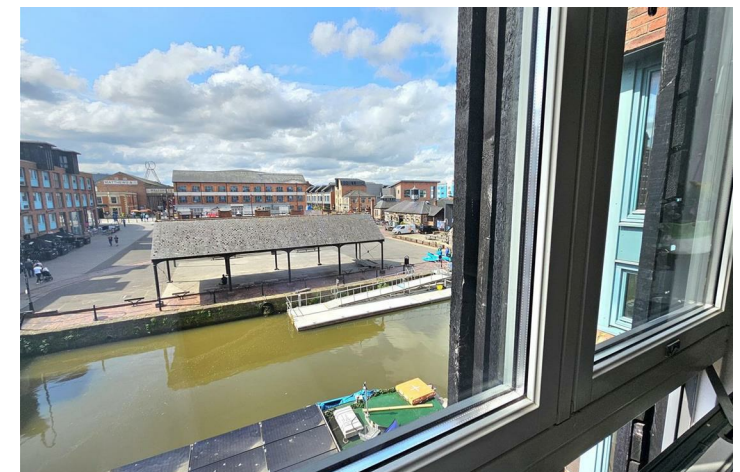
Heating: Gas Central Heating

Broadband speed: Basic 17 Mbps, Superfast 80Mbps, Ultrafast 1000 Mbps- Highest available download speed

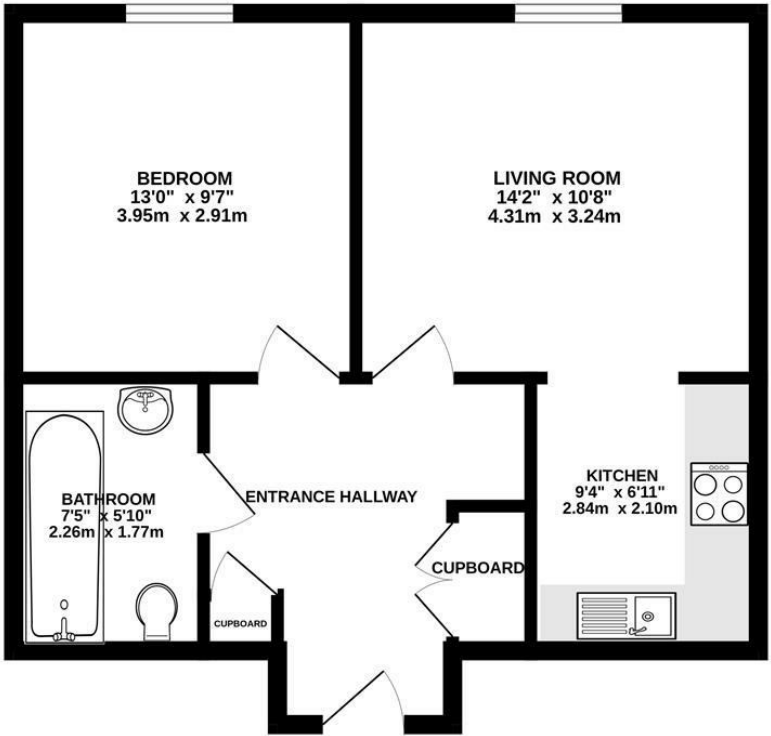
Mobile phone coverage: EE, Three, Vodafone, O2

### Agents Note

\*\*\*Please note, the marketing photos were taken prior to the current tenant moving in to the property.\*\*\*



SECOND FLOOR  
461 sq.ft. (42.8 sq.m.) approx.



TOTAL FLOOR AREA : 461 sq.ft. (42.8 sq.m.) approx.  
Whilst every attempt has been made to ensure the accuracy of the floorplan contained here, measurements of doors, windows, rooms and any other items are approximate and no responsibility is taken for any error, omission or mis-statement. This plan is for illustrative purposes only and should be used as such by any prospective purchaser. The services, systems and appliances shown have not been tested and no guarantee as to their operability or efficiency can be given.  
Made with Metropix ©2005.

Disclaimer: These particulars do not form part of any contract and no responsibility is accepted for any errors or omissions in any statement made, whether verbally or written for or on behalf of Naylor Powell.

Floorplans have been prepared for identification purposes only, they are not to scale and no guarantee can be given as to their accuracy.

Prospective purchasers please be aware none of the appliances, boiler, heaters etc. which may have been mentioned in these particulars have been tested and no guarantee can be given that they are in working order. Prospective purchasers should arrange for such items to be tested at their own expense.

