



Everything you need to know about:

**Limebrest Avenue,  
Thornton Cleveleys,  
FY5 5AT**



**Introduction**



**The Property**



**Local Authority**



**Transport Links**

**Education**



**Health**



**Local Policing**





### An invaluable insight into your new home

This i-PACK brochure offers an informed overview of **Limebrest Avenue** as a potential new home, along with essential material about its surrounding area and its local community. It provides a valuable insight for any prospective owner or tenant.

We wanted to provide you with information that you can absorb quickly, so we have presented it as visually as possible, making use of maps, icons, tables, graphs and charts. Overall, the brochure contains information about:

- **The Property** - including property details, floor plans, room details, photographs and Energy Performance Certificate.
- **Transport** - including locations of bus and coach stops, railway stations and ferry ports.
- **Health** - including locations, contact details and organisational information on the nearest GPs, pharmacies, hospitals and dentists.
- **Local Policing** - including locations, contact details and information about local community policing and the nearest police station, as well as police officers assigned to the area.
- **Education** - including locations of infant, primary and secondary schools and Key Performance Indicators (KPIs) for each key stage.







LIMEBREST AVENUE, THORNTON CLEVELEYS £260,000



x4  
Bedrooms



x2  
Living Rooms



x1  
Bathrooms

Where you are





i-PACK

LIMEBREST AVENUE, THORNTON CLEVELEYS  
£260,000



Kitchen Area

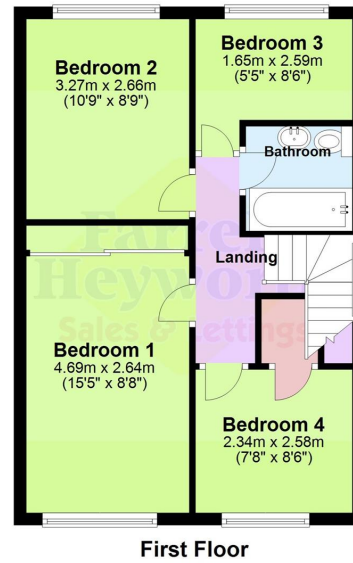
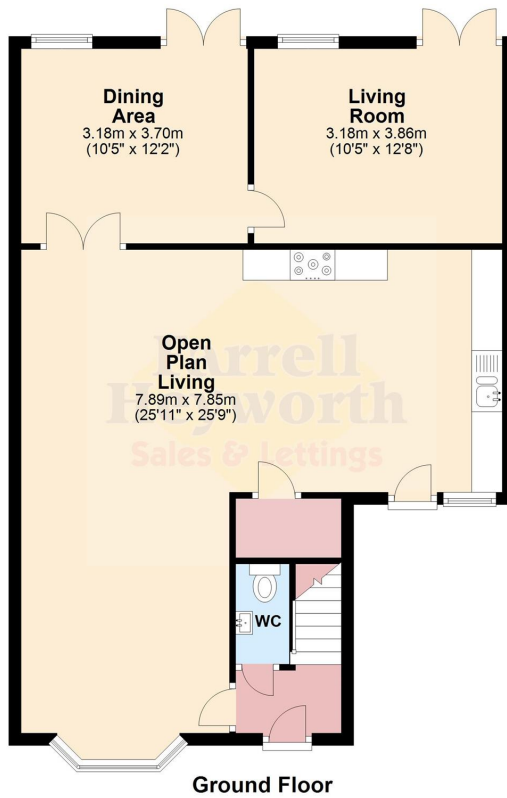


Lounge



Farrell Heyworth Landmark House 5a Cleveleys Avenue , Thornton-Cleveleys, FY5 2UH 01253 858200









Everything you want  
to know about  
local authorities







**Get to know your local authorities**

Local government directly affects quality of life, particularly when it comes to council tax, planning, waste disposal and the impact of local policies. You may want to investigate how this is likely to affect you if you decide to move. There are nearly 400 local authorities in England, with five different types of local government structure. These can be broadly divided into **single-tier** and **two-tier authorities**. Single-tier authorities are **Metropolitan Authorities, London Boroughs** and **Unitary or Shire Authorities**. Two-tier authorities have both a **County Council**, and a **District Council or City Council**. There are also around 10,000 parish and town councils, effectively creating an additional tier in some areas - mostly, but not exclusively, in rural areas. The National Association of Local Councils (NALC) represents and works on behalf of these community councils and is a useful contact point.

The local authority locations and contact details for **Limebrest Avenue** are:

Shire / County / District	Website	Address	Contact details
---------------------------	---------	---------	-----------------

**Disclaimer:** The information displayed above has been obtained using the property's postcode in proximity to its local authority. It is recommended that this information is independently verified.



Everything you want  
to know about  
transport links










**Become familiar with public transport links**

Being able to choose to travel by public transport is important for many reasons. It helps to reduce congestion, provides access to work and education, and facilitates use of health and leisure facilities. If you or your family members travel abroad, access to the nearest ferry terminals is also likely to be a significant factor in choosing a new property. Using the maps below, you can pinpoint the precise locations of transport links for **Limebrest Avenue**. Tables for each type of transport indicate the property's distance from the nearest bus stops, railway stations, coach stops and ferry terminals (providing that these facilities are within the scale proximity of the maps.)

**Transport Links**



	Airports	Approx Distance
	Blackpool International Airport	6.37 miles
	Liverpool John Lennon Airport	36.97 miles
	Manchester Airport	45.81 miles
	Ferry ports	Approx Distance
	Fleetwood for Knott End Ferry Landing	4.24 miles
	Knott End-On-Sea Ferry Landing	4.28 miles
	Heysham Ferry Terminal	12.06 miles
	Piel Island Ferry Landing	15.4 miles
	Roa Island Ferry Landing	15.99 miles
	Train Stations	Approx Distance
	Poulton-le-Fylde Rail Station	1.28 miles
	Layton (Lancs) Rail Station	2.53 miles
	Blackpool North Rail Station	3.73 miles
	Blackpool South Rail Station	5.13 miles
	Blackpool Pleasure Beach Rail Station	5.89 miles

**Disclaimer:** The information represented in this section has been sourced from the Department of Transport's Open Data and is based on the property's postcode. It is recommended that this information is independently verified.



**Farrell Heyworth** Landmark House 5a Cleveleys Avenue , Thornton-Cleveleys, FY5 2UH **01253 858200**



	Bus Stops	Approx Distance
	Daleford Close	0.04 miles
	Daleford Close	0.05 miles
	School Road	0.12 miles
	Tarn Road	0.15 miles
	Millfield High School	0.16 miles
	Coach Stops	Approx Distance
	Blackpool: Central Coach Station	4.29 miles
	Blackpool: Lonsdale Coach Park	4.68 miles
	Blackpool: Pontins Coach Stop	6.82 miles
	St Annes-on-the-Sea: Ashton Gdns Coach Stop	8.1 miles
	Ansdell Coach Stop	8.76 miles

**Disclaimer:** The information represented in this section has been sourced from the Department of Transport's Open Data and is based on the property's postcode. It is recommended that this information is independently verified.



**Farrell Heyworth** Landmark House 5a Cleveleys Avenue , Thornton-Cleveleys, FY5 2UH **01253 858200**



Everything you want  
to know about  
local schools





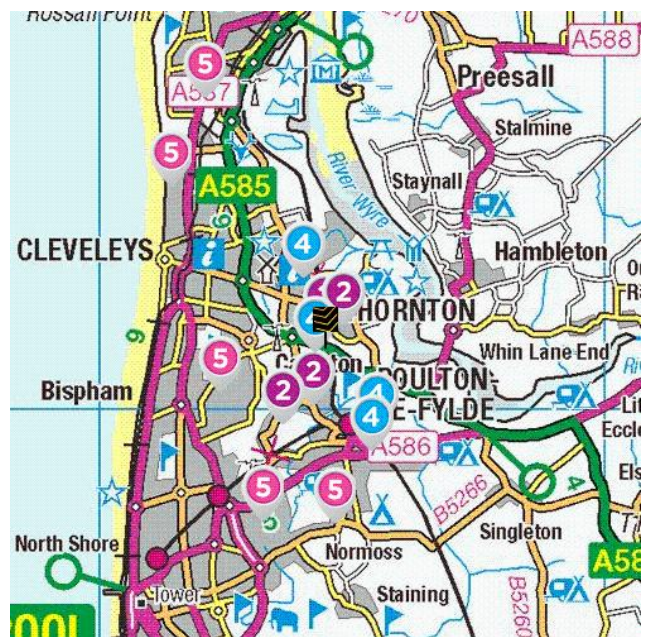


### How are local schools performing?

If schools are important to you, then this section sets out the published Key Performance Indicators for schools near to your prospective new home. Key Performance Indicators look primarily at how well pupils perform in their tests and examinations, as well as some other measures like attendance.

If you want to know more about a particular school or college, you can also visit the Ofsted website <http://www.ofsted.gov.uk/inspection-reports/find-inspection-report>

### Local Schools



The next page shows tables and charts divided into Key Stages and a list of respective schools local to **Limebrest Avenue**. There are four main age-related Key Stages defined as:





Special schools are marked with this icon

Key Stage	Definition
Key Stage 1	Fits broadly with the first stage of education, i.e. ages 5-7.
Key Stage 2	Fits the later stage of primary education, often known as junior schools, i.e. ages 8-11. This takes pupils up to the standardised break at age 11 after which pupils generally change schools and transfer to secondary education.
Key Stage 3	Secondary education split between key stages 3 and 4, with key stage 3 covering ages 11-13.
Key Stage 4	Key Stage 4 (ages 14-16) covers the two year period of study for GCSE level examinations.
Key Stage 5	Beyond key stage 4 is 16+ or Sixth Form provision, sometimes unofficially referred to as Key Stage 5.



**Farrell Heyworth** Landmark House 5a Cleveleys Avenue , Thornton-Cleveleys, FY5 2UH **01253 858200**



	Key Stage 2 - Information	Approx Distance
	<p><b>Name:</b> Thornton Cleveleys Baines Endowed Voluntary Controlled Primary School  <b>Address:</b> Station Road, Thornton-Cleveleys, FY5 5HY  <b>Contact Number:</b> 01253823420  <b>Age Range:</b> 4-11 yrs  <b>Local Education Authority:</b> Lancashire  <b>Religious Character:</b> None</p>	0.32 miles
	<p><b>Name:</b> Stanah Primary School  <b>Address:</b> Lambs Road, Thornton-Cleveleys, FY5 5JR  <b>Contact Number:</b> 01253825225  <b>Age Range:</b> 4-11 yrs  <b>Local Education Authority:</b> Lancashire  <b>Religious Character:</b> Does not apply</p>	0.44 miles
	<p><b>Name:</b> Carleton Green Community Primary School  <b>Address:</b> Arundel Drive, Poulton-le-Fylde, FY6 7TF  <b>Contact Number:</b> 01253891228  <b>Age Range:</b> 2-11 yrs  <b>Local Education Authority:</b> Lancashire  <b>Religious Character:</b> Does not apply</p>	0.63 miles
	<p><b>Name:</b> Carleton St Hilda's Church of England Primary School  <b>Address:</b> Bispham Road, Poulton-le-Fylde, FY6 7PE  <b>Contact Number:</b> 01253882225  <b>Age Range:</b> 5-11 yrs  <b>Local Education Authority:</b> Lancashire  <b>Religious Character:</b> Church of England</p>	0.99 miles
	<p>  <b>Name:</b> Thornton-Cleveleys Red Marsh School  <b>Address:</b> Holly Road, Thornton-Cleveleys, FY5 4HH  <b>Contact Number:</b> 01253868451  <b>Age Range:</b> 2-19 yrs  <b>Local Education Authority:</b> Lancashire  <b>Religious Character:</b> Does not apply</p>	1.0 miles

**Disclaimer:** The information represented in this section has been sourced from the Department of Education's 2019 results data s and is based on the property's postcode.



## Reading, Writing and Maths

	Name	Expected	Higher
2	Thornton Cleveleys Baines Endowed Voluntary Controlled Primary School	66.0 %	7.0 %
	Stanah Primary School	72.0 %	19.0 %
	Carleton Green Community Primary School	78.0 %	11.0 %
	Carleton St Hilda's Church of England Primary School	79.0 %	21.0 %
	Thornton-Cleveleys Red Marsh School	N/A	N/A
	<b>Lancashire</b>	64.0 %	10.0 %
<b>National</b>	65.0 %	11.0 %	

## Primary Progress Measures

As well as actual pupil performance in tests and exams an important Key Performance Indicator is that of progress measures that compare the actual achievements of other pupils nationally with similar prior attainment. Any increase in attainment achieved by each pupil will be reflected in the schools progress scores. They are fairer to schools in challenging circumstances, as they recognise a school that is doing a good job with an intake with poor prior attainment

## Progress Measures for 2019





	Name	Math	Reading	Writing
2	Thornton Cleveleys Baines Endowed Voluntary Controlled Primary School	-1.3 %	-1.6 %	-1.9 %
	Stanah Primary School	0.4 %	-2.1 %	0.0 %
	Carleton Green Community Primary School	4.6 %	2.1 %	1.1 %
	Carleton St Hilda's Church of England Primary School	1.4 %	-0.3 %	1.3 %
	Thornton-Cleveleys Red Marsh School	N/A	N/A	N/A

**Disclaimer:** The information represented in this section has been sourced from the Department of Education's 2019 results data set and is based on the property's postcode.



**Farrell Heyworth** Landmark House 5a Cleveleys Avenue , Thornton-Cleveleys, FY5 2UH 01253 858200



	Key Stage 4 - Information	Approx Distance
	<p><b>Name:</b> Millfield Science &amp; Performing Arts College  <b>Address:</b> Belvedere Road, Thornton-Cleveleys, FY5 5DG  <b>Contact Number:</b> 01253865929  <b>Age Range:</b> 11-16 yrs  <b>Local Education Authority:</b> Lancashire  <b>Religious Character:</b> Does not apply</p>	0.13 miles
	<p>  <b>Name:</b> Great Arley School  <b>Address:</b> Holly Road, Thornton-Cleveleys, FY5 4HH  <b>Contact Number:</b> 01253821072  <b>Age Range:</b> 4-16 yrs  <b>Local Education Authority:</b> Lancashire  <b>Religious Character:</b> Does not apply</p>	1.0 miles
	<p>  <b>Name:</b> Thornton-Cleveleys Red Marsh School  <b>Address:</b> Holly Road, Thornton-Cleveleys, FY5 4HH  <b>Contact Number:</b> 01253868451  <b>Age Range:</b> 2-19 yrs  <b>Local Education Authority:</b> Lancashire  <b>Religious Character:</b> Does not apply</p>	1.0 miles
	<p>  <b>Name:</b> Brookfield School  <b>Address:</b> Fouldrey Avenue, 881188, FY6 7HE  <b>Contact Number:</b> 01253886895  <b>Age Range:</b> 11-16 yrs  <b>Local Education Authority:</b> Lancashire  <b>Religious Character:</b> Does not apply</p>	1.08 miles
	<p><b>Name:</b> Hodgson Academy  <b>Address:</b> Moorland Road, Poulton-le-Fylde, FY6 7EU  <b>Contact Number:</b> 01253882815  <b>Age Range:</b> 11-16 yrs  <b>Local Education Authority:</b> Lancashire  <b>Religious Character:</b> Does not apply</p>	1.3 miles

**Disclaimer:** The information represented in this section has been sourced from the Department of Education's 2019 results data set and is based on the property's postcode.



**Percentage of pupils achieving 5+ A\*-C/9-4 or equivalents including 9-4 in both English and mathematics GCSEs**

	Name	2019	2018	2017	2016
4	Millfield Science & Performing Arts College	59.0 %	68.0 %	63.0 %	72.0 %
	Great Arley School	N/A	N/A	N/A	N/A
	Thornton-Cleveleys Red Marsh School	N/A	N/A	N/A	N/A
	Brookfield School	6.0 %	0.0 %	0.0 %	0.0 %
	Hodgson Academy	75.0 %	77.0 %	79.0 %	77.0 %
	<b>Lancashire</b>	<b>66.0 %</b>	<b>66.1 %</b>	<b>61.7 %</b>	<b>58.5 %</b>
	<b>National</b>	<b>60.0 %</b>	<b>59.4 %</b>	<b>56.6 %</b>	<b>53.5 %</b>

**Disclaimer:** The information represented in this section has been sourced from the Department of Education's 2017 results data set and is based on the property's postcode.


**Average number of GCSE entries per pupil**

	Name	Number
4	Millfield Science & Performing Arts College	7.3
	Great Arley School	N/A
	Thornton-Cleveleys Red Marsh School	N/A
	Brookfield School	2.4
	Hodgson Academy	7.7
	<b>Lancashire</b>	<b>7.5</b>
	<b>National</b>	<b>7.1</b>

**Disclaimer:** The information represented in this section has been sourced from the Department of Education's 2019 results data set and is based on the property's postcode.






	Key Stage 5 - Information	Approx Distance
	<p><b>Name:</b> Blackpool and the Fylde College  <b>Address:</b> Ashfield Road, Blackpool, FY2 0HB  <b>Contact Number:</b> 01253352352  <b>Age Range:</b> 16+ yrs  <b>Local Education Authority:</b> Blackpool  <b>Religious Character:</b> Does not apply  <b>Admission Policy:</b> Not applicable</p>	1.38 miles
	<p><b>Name:</b> Baines School  <b>Address:</b> Highcross Road, Poulton-le-Fylde, FY6 8BE  <b>Contact Number:</b> 01253883019  <b>Age Range:</b> 11-16 yrs  <b>Local Education Authority:</b> Lancashire  <b>Religious Character:</b> None  <b>Admission Policy:</b> Comprehensive</p>	2.08 miles
	<p><b>Name:</b> The Blackpool Sixth Form College  <b>Address:</b> Highfurlong, Blackpool, FY3 7LR  <b>Contact Number:</b> 01253394911  <b>Age Range:</b> 16+ yrs  <b>Local Education Authority:</b> Blackpool  <b>Religious Character:</b> Does not apply  <b>Admission Policy:</b> Not applicable</p>	2.19 miles
	<p><b>Name:</b> Rossall School  <b>Address:</b> Broadway, Fleetwood, FY7 8JW  <b>Contact Number:</b> 01253774201  <b>Age Range:</b> 2-19 yrs  <b>Local Education Authority:</b> Lancashire  <b>Religious Character:</b> Anglican</p>	2.82 miles
	<p><b>Name:</b> Fleetwood High School  <b>Address:</b> Broadway, Fleetwood, FY7 8HE  <b>Contact Number:</b> 01253876757  <b>Age Range:</b> 11-16 yrs  <b>Local Education Authority:</b> Lancashire  <b>Religious Character:</b> None</p>	3.49 miles

**Disclaimer:** The information represented in this section has been sourced from the Department of Education's 2019 results data s and is based on the property's postcode.




**Percentage of A level students achieving at least three levels at grades AAB or better, at least two of which are in facilitating subjects**

	Name	%
	Blackpool and the Fylde College	N/A
	Baines School	N/A
	The Blackpool Sixth Form College	9.1 %
	Rossall School	6.8 %
	Fleetwood High School	N/A
	<b>Blackpool</b>	<b>9.7 %</b>
	<b>National</b>	<b>16.5 %</b>

**Disclaimer:** The information represented in this section has been sourced from the Department of Education's 2019 results data set and is based on the property's postcode.

As well as actual pupil performance in tests and exams, an important Key Performance Indicator is that of Value Added. When pupils start a school, they all have varying levels of ability and social advantage. A school's Value Added score measures how much progress they have made from the beginning to the end of their compulsory secondary education (i.e. between the end of Key Stage 2 and the end of Key Stage 4). It is a quick measurement of the effect of a school on its pupils.

	Name	Value Added
	Blackpool and the Fylde College	N/A
	Baines School	N/A
	The Blackpool Sixth Form College	0.0
	Rossall School	0.0
	Fleetwood High School	N/A







Everything you want  
to know about  
local health services





**How local are the health services?**

We all want good access to local health facilities, wherever we live. To see how well **Limebrest Avenue** is served, we have set out below the exact locations of hospitals, Accident & Emergency centres, GPs, pharmacies, dentists, out-of-hours medical care and walk-in clinics. Where it's available, you will find more detailed information, including the names of practitioners and their contact details.

Hospitals	Approx Distance	
	Blackpool Victoria Hospital, Whinney Heys Road, Blackpool, Lancashire, FY3 8NR	3.25 miles
	Royal Preston Hospital, Sharoe Green Lane North, Preston, Lancashire, PR2 9HT	12.91 miles
	Royal Lancaster Infirmary, Ashton Road, Lancaster, Lancashire, LA1 4RP	14.61 miles
	Southport And Formby District General Hospital, Southport, Merseyside, PR8 6PN	16.09 miles
	Chorley And South Ribble Hospital, Chorley and South Ribble Hospital, Chorley, Lancashire, PR7 1PP	20.21 miles
A&E	Approx Distance	
	Blackpool Victoria Hospital, Whinney Heys Road, Blackpool, Lancashire, FY3 8NR	3.25 miles
	Royal Preston Hospital, Sharoe Green Lane North, Preston, Lancashire, PR2 9HT	12.91 miles
	Royal Lancaster Infirmary, Ashton Road, Lancaster, Lancashire, LA1 4RP	14.61 miles
	Southport And Formby District General Hospital, Southport, Merseyside, PR8 6PN	16.09 miles
	Chorley And South Ribble Hospital, Chorley and South Ribble Hospital, Chorley, Lancashire, PR7 1PP	20.21 miles



	Walk-in Clinics	Approx Distance
	Blackpool Victoria Hospital, Whinney Heys Road, Blackpool, Lancashire, FY3 8NR	3.25 miles
	Same Day Health Centre – Fleetwood, Same Day Health Centre, Fleetwood, Lancashire, FY7 6HP	3.8 miles
	Blackpool Nhs Walk-in Centre, Whitegate Health Centre, Blackpool, Lancashire, FY3 9ES	3.99 miles
	Same Day Health Centre – Morecambe, Same Day Health Centre, Morecambe, Lancashire, LA4 5LY	15.31 miles
	Ormskirk And District General Hospital, Ormskirk, Lancashire, L39 2AZ	21.47 miles
	GPs	Approx Distance
	BEECHWOOD SURGERY, BEECHWOOD SURGERY, LANCASHIRE, FY5 5EJ	0.37 miles
	CARLETON PRACTICE, CARLETON SURGERY, POULTON-LE-FYLDE, FY6 7NJ	0.97 miles
	THE VILLAGE PRACTICE, THORNTON MEDICAL CENTRE, FY5 2TZ	1.0 miles
	THE THORNTON PRACTICE, THE THORNTON PRACTICE, LANCASHIRE, FY5 2TZ	1.0 miles
	THE LOCKWOOD AVENUE SURGERY, WESTBOURNE COURT, BLACKPOOL, LANCASHIRE, FY6 7AB	1.17 miles
	Dental Surgeons	Approx Distance
	Community Dental Services, Ashton Road, LANCASTER, Lancashire, LA1 4RR	14.49 miles
	Mayo Dental Clinic, Dallas Road, LANCASTER, Lancashire, LA1 1TW	14.67 miles
	Mayo Dental Clinic, 3 Meeting House Lane, LANCASTER, Lancashire, LA1 1TJ	14.77 miles
	Central Dental Practice, Telephone House, LANCASTER, Lancashire, LA1 1AB	14.79 miles
	Brock Street Dental Practice, 8 Brock Street, LANCASTER, Lancashire, LA1 1UU	14.87 miles

**Disclaimer:** The information represented in this section has been sourced from Experian and is based on the property's postcode.



**Farrell Heyworth** Landmark House 5a Cleveleys Avenue , Thornton-Cleveleys, FY5 2UH **01253 858200**



Everything you want  
to know about  
local policing







### Understanding who polices your neighbourhood

When you move to a new area, you want to know the arrangements for local community policing. See below for essential information about police services near to **Limebrest Avenue**. We have included location and contact details for the police station and wherever possible, details of police officers assigned to the area.

#### Your policing neighbourhood

The name of your policing neighbourhood is **Staina** and it has a population of **6112**.

#### Your Local Policing Team

Name	Rank	Tel No.	E-mail
Mandy Clarke	Constable		

**Disclaimer:** The information represented in this section has been sourced from data.police.uk.

**Disclaimer:** The information represented in this section has been sourced from data.police.uk.





