



Everything you need to know about:

**Chaucer Place,
Blackpool,
FY2 0GL**



Introduction



The Property



Local Authority



Transport Links

Education



Health



Local Policing





An invaluable insight into your new home

This i-PACK brochure offers an informed overview of **Chaucer Place** as a potential new home, along with essential material about its surrounding area and its local community. It provides a valuable insight for any prospective owner or tenant.

We wanted to provide you with information that you can absorb quickly, so we have presented it as visually as possible, making use of maps, icons, tables, graphs and charts. Overall, the brochure contains information about:

- **The Property** - including property details, floor plans, room details, photographs and Energy Performance Certificate.
- **Transport** - including locations of bus and coach stops, railway stations and ferry ports.
- **Health** - including locations, contact details and organisational information on the nearest GPs, pharmacies, hospitals and dentists.
- **Local Policing** - including locations, contact details and information about local community policing and the nearest police station, as well as police officers assigned to the area.
- **Education** - including locations of infant, primary and secondary schools and Key Performance Indicators (KPIs) for each key stage.





CHAUCER PLACE, BLACKPOOL £265,000



x4
Bedrooms

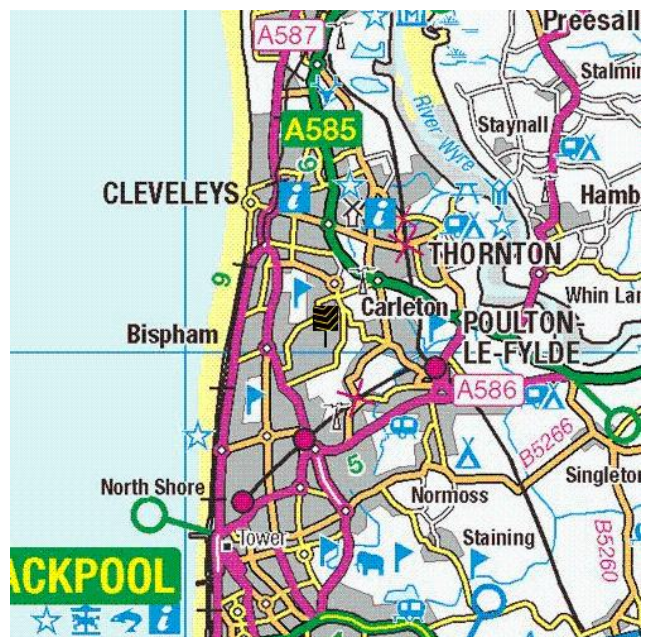
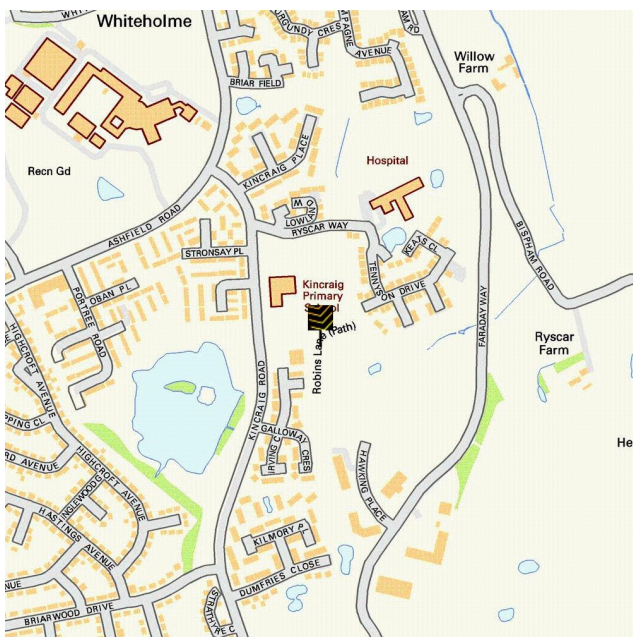


x2
Living Rooms



x1
Bathrooms

Where you are



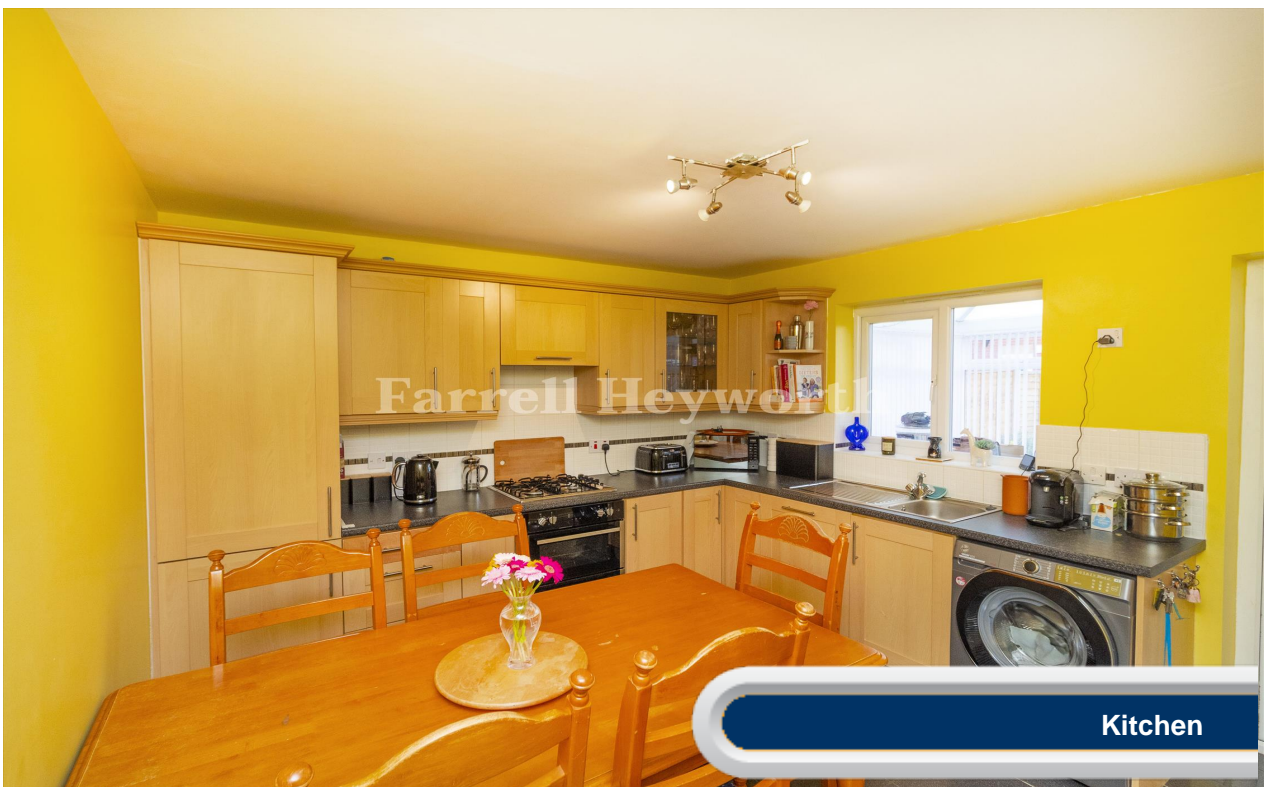


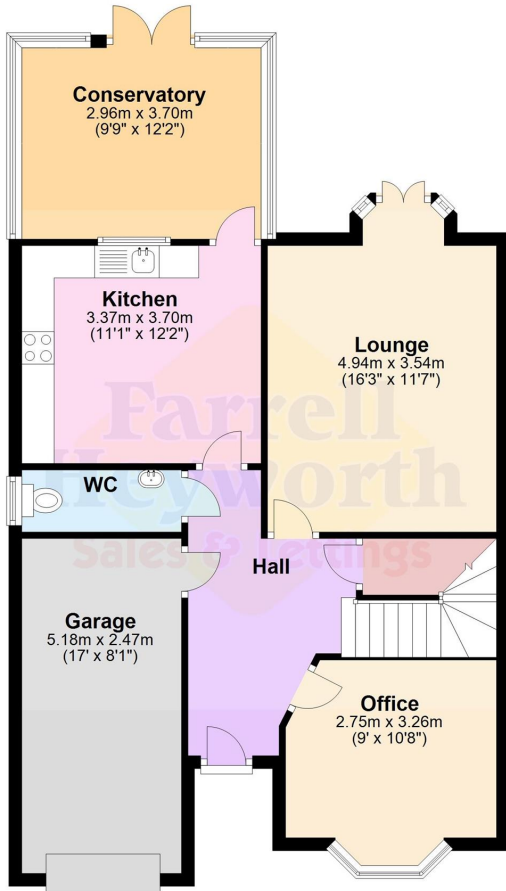
Rear View



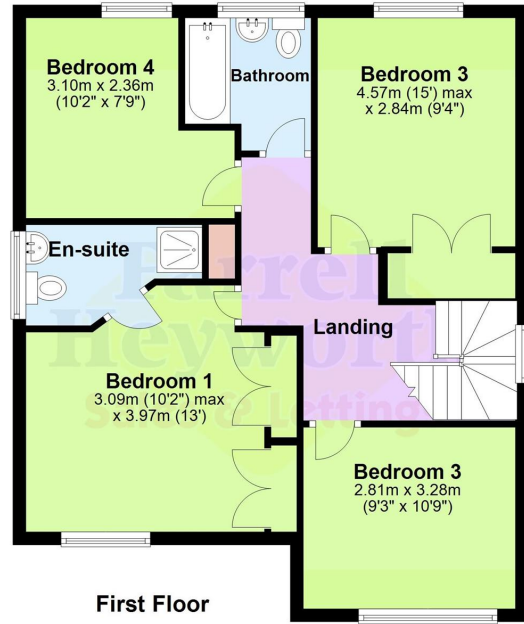
Lounge







Ground Floor



First Floor





Everything you want
to know about
local authorities





Get to know your local authorities

Local government directly affects quality of life, particularly when it comes to council tax, planning, waste disposal and the impact of local policies. You may want to investigate how this is likely to affect you if you decide to move. There are nearly 400 local authorities in England, with five different types of local government structure. These can be broadly divided into **single-tier** and **two-tier authorities**.

Single-tier authorities are **Metropolitan Authorities, London Boroughs** and **Unitary or Shire Authorities**.

Two-tier authorities have both a **County Council**, and a **District Council or City Council**.

There are also around 10,000 parish and town councils, effectively creating an additional tier in some areas - mostly, but not exclusively, in rural areas. The National Association of Local Councils (NALC) represents and works on behalf of these community councils and is a useful contact point.

The local authority locations and contact details for **Chaucer Place** are:

Shire / County / District	Website	Address	Contact details
---------------------------	---------	---------	-----------------

Disclaimer: The information displayed above has been obtained using the property's postcode in proximity to its local authority. It is recommended that this information is independently verified.



Everything you want
to know about
transport links

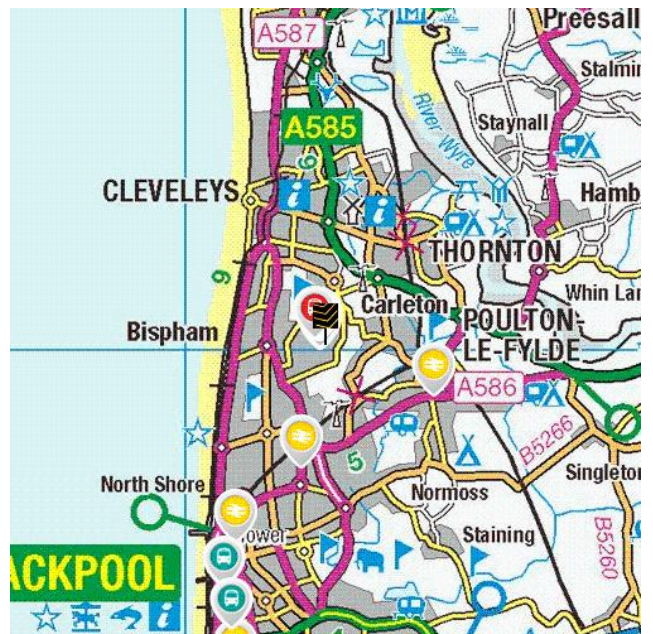







Become familiar with public transport links

Being able to choose to travel by public transport is important for many reasons. It helps to reduce congestion, provides access to work and education, and facilitates use of health and leisure facilities. If you or your family members travel abroad, access to the nearest ferry terminals is also likely to be a significant factor in choosing a new property. Using the maps below, you can pinpoint the precise locations of transport links for **Chaucer Place**. Tables for each type of transport indicate the property's distance from the nearest bus stops, railway stations, coach stops and ferry terminals (providing that these facilities are within the scale proximity of the maps.)

Transport Links



	Airports	Approx Distance
	Blackpool International Airport	5.46 miles
	Liverpool John Lennon Airport	36.47 miles
	Manchester Airport	45.98 miles
	Ferry ports	Approx Distance
	Fleetwood for Knott End Ferry Landing	4.97 miles
	Knott End-On-Sea Ferry Landing	5.09 miles
	Heysham Ferry Terminal	13.05 miles
	Piel Island Ferry Landing	15.59 miles
	Roa Island Ferry Landing	16.2 miles
	Train Stations	Approx Distance
	Poulton-le-Fylde Rail Station	1.43 miles
	Layton (Lancs) Rail Station	1.48 miles
	Blackpool North Rail Station	2.61 miles
	Blackpool South Rail Station	4.12 miles
	Blackpool Pleasure Beach Rail Station	4.89 miles

Disclaimer: The information represented in this section has been sourced from the Department of Transport's Open Data and is based on the property's postcode. It is recommended that this information is independently verified.



Farrell Heyworth Landmark House 5a Cleveleys Avenue , Thornton-Cleveleys, FY5 2UH **01253 858200**

	Bus Stops	Approx Distance
	Beattock Place	0.06 miles
	Beattock Place	0.08 miles
	Kincraig Place	0.13 miles
	Kincraig Place	0.15 miles
	Stronsay Place	0.18 miles
	Coach Stops	Approx Distance
	Blackpool: Central Coach Station	3.2 miles
	Blackpool: Lonsdale Coach Park	3.63 miles
	Blackpool: Pontins Coach Stop	5.87 miles
	St Annes-on-the-Sea: Ashton Gdns Coach Stop	7.28 miles
	Ansdell Coach Stop	8.15 miles

Disclaimer: The information represented in this section has been sourced from the Department of Transport's Open Data and is based on the property's postcode. It is recommended that this information is independently verified.



Farrell Heyworth Landmark House 5a Cleveleys Avenue , Thornton-Cleveleys, FY5 2UH **01253 858200**



Everything you want
to know about
local schools



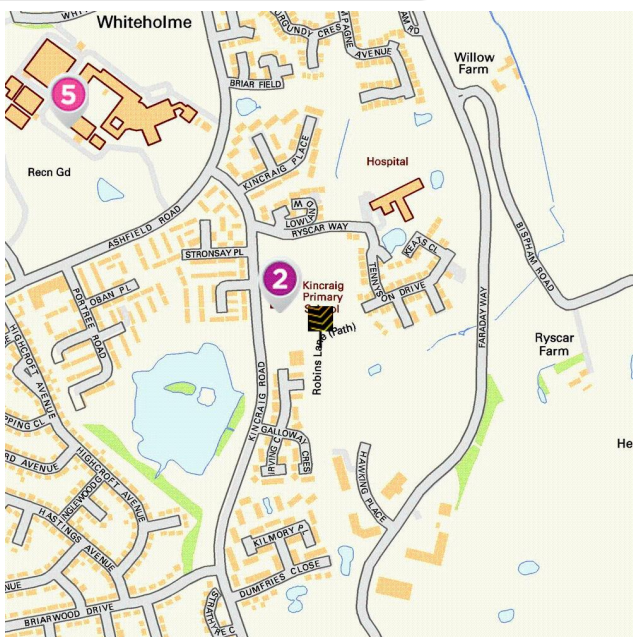


How are local schools performing?

If schools are important to you, then this section sets out the published Key Performance Indicators for schools near to your prospective new home. Key Performance Indicators look primarily at how well pupils perform in their tests and examinations, as well as some other measures like attendance.

If you want to know more about a particular school or college, you can also visit the Ofsted website <http://www.ofsted.gov.uk/inspection-reports/find-inspection-report>

Local Schools



The next page shows tables and charts divided into Key Stages and a list of respective schools local to **Chaucer Place**. There are four main age-related Key Stages defined as:



Special schools are marked with this icon

Key Stage	Definition
Key Stage 1	Fits broadly with the first stage of education, i.e. ages 5-7.
Key Stage 2	Fits the later stage of primary education, often known as junior schools, i.e. ages 8-11. This takes pupils up to the standardised break at age 11 after which pupils generally change schools and transfer to secondary education.
Key Stage 3	Secondary education split between key stages 3 and 4, with key stage 3 covering ages 11-13.
Key Stage 4	Key Stage 4 (ages 14-16) covers the two year period of study for GCSE level examinations.
Key Stage 5	Beyond key stage 4 is 16+ or Sixth Form provision, sometimes unofficially referred to as Key Stage 5.




Farrell Heyworth Landmark House 5a Cleveleys Avenue , Thornton-Cleveleys, FY5 2UH **01253 858200**

	Key Stage 2 - Information	Approx Distance
	<p>Name: Kincaig Primary School Address: Kincaig Road, Blackpool, FY2 0HN Contact Number: 01253354059 Age Range: 2-11 yrs Local Education Authority: Blackpool Religious Character: Does not apply</p>	0.06 miles
	<p>Name: Carleton St Hilda's Church of England Primary School Address: Bispham Road, Poulton-le-Fylde, FY6 7PE Contact Number: 01253882225 Age Range: 5-11 yrs Local Education Authority: Lancashire Religious Character: Church of England</p>	0.56 miles
	<p>Name: Moor Park Primary School Address: Moor Park Avenue, Blackpool, FY2 0LY Contact Number: 01253353034 Age Range: 3-11 yrs Local Education Authority: Blackpool Religious Character: Does not apply</p>	0.74 miles
	<p>Name: St Bernadette's Catholic Primary School Address: Devonshire Road, Blackpool, FY2 0AJ Contact Number: 01253353641 Age Range: 5-11 yrs Local Education Authority: Blackpool Religious Character: Roman Catholic</p>	0.75 miles
	<p>Name: Westcliff Primary Academy Address: Crawford Avenue, Blackpool, FY2 9BY Contact Number: 01253353792 Age Range: 4-11 yrs Local Education Authority: Blackpool Religious Character: Does not apply</p>	0.81 miles

Disclaimer: The information represented in this section has been sourced from the Department of Education's 2019 results data s and is based on the property's postcode.




Reading, Writing and Maths

	Name	Expected	Higher
	Kincraig Primary School	87.0 %	17.0 %
	Carleton St Hilda's Church of England Primary School	79.0 %	21.0 %
	Moor Park Primary School	51.0 %	0.0 %
	St Bernadette's Catholic Primary School	71.0 %	4.0 %
	Westcliff Primary Academy	84.0 %	12.0 %
	Blackpool	67.0 %	7.0 %
National	65.0 %	11.0 %	

Primary Progress Measures

As well as actual pupil performance in tests and exams an important Key Performance Indicator is that of progress measures that compare the actual achievements of other pupils nationally with similar prior attainment. Any increase in attainment achieved by each pupil will be reflected in the schools progress scores. They are fairer to schools in challenging circumstances, as they recognise a school that is doing a good job with an intake with poor prior attainment



Progress Measures for 2019

	Name	Math	Reading	Writing
	Kincraig Primary School	2.7 %	3.0 %	4.7 %
	Carleton St Hilda's Church of England Primary School	1.4 %	-0.3 %	1.3 %
	Moor Park Primary School	-3.1 %	-1.1 %	-4.1 %
	St Bernadette's Catholic Primary School	0.5 %	0.6 %	0.8 %
	Westcliff Primary Academy	-1.5 %	0.0 %	3.1 %

Disclaimer: The information represented in this section has been sourced from the Department of Education's 2019 results data set and is based on the property's postcode.



Farrell Heyworth Landmark House 5a Cleveleys Avenue , Thornton-Cleveleys, FY5 2UH 01253 858200

	Key Stage 4 - Information	Approx Distance
	<p>Name: Montgomery High School Address: All Hallows Road, Blackpool, FY2 0AZ Contact Number: 01253356271 Age Range: 11-16 yrs Local Education Authority: Blackpool Religious Character: None</p>	0.59 miles
	<p>Name: Blackpool Aspire Academy Address: Bispham Road, Blackpool, FY2 0NH Contact Number: 01253353155 Age Range: 11-16 yrs Local Education Authority: Blackpool Religious Character: None</p>	1.04 miles
	<p>Name: Millfield Science & Performing Arts College Address: Belvedere Road, Thornton-Cleveleys, FY5 5DG Contact Number: 01253865929 Age Range: 11-16 yrs Local Education Authority: Lancashire Religious Character: Does not apply</p>	1.18 miles
	<p> Name: Highfurlong School Address: Blackpool Old Road, Blackpool, FY3 7LR Contact Number: 01253392188 Age Range: 2-19 yrs Local Education Authority: Blackpool Religious Character: Does not apply</p>	1.39 miles
	<p>Name: Unity Academy Blackpool Address: Warbreck Hill Road, Blackpool, FY2 0TS Contact Number: 01253478129 Age Range: 5-16 yrs Local Education Authority: Blackpool Religious Character: Does not apply</p>	1.58 miles

Disclaimer: The information represented in this section has been sourced from the Department of Education's 2019 results data s and is based on the property's postcode.



Percentage of pupils achieving 5+ A*-C/9-4 or equivalents including 9-4 in both English and mathematics GCSEs

	Name	2019	2018	2017	2016
4	Montgomery High School	57.0 %	51.0 %	51.0 %	58.0 %
	Blackpool Aspire Academy	47.0 %	40.0 %	36.0 %	34.0 %
	Millfield Science & Performing Arts College	59.0 %	68.0 %	63.0 %	72.0 %
	Highfurlong School	N/A	N/A	N/A	N/A
	Unity Academy Blackpool	29.0 %	29.0 %	43.0 %	37.0 %
	Blackpool	48.0 %	47.3 %	45.5 %	43.0 %
	National	60.0 %	59.4 %	56.6 %	53.5 %

Disclaimer: The information represented in this section has been sourced from the Department of Education's 2017 results data set and is based on the property's postcode.

Average number of GCSE entries per pupil

	Name	Number
4	Montgomery High School	7.0
	Blackpool Aspire Academy	7.0
	Millfield Science & Performing Arts College	7.3
	Highfurlong School	N/A
	Unity Academy Blackpool	6.2
	Blackpool	6.8
	National	7.1

Disclaimer: The information represented in this section has been sourced from the Department of Education's 2019 results data set and is based on the property's postcode.




	Key Stage 5 - Information	Approx Distance
	<p>Name: Blackpool and the Fylde College Address: Ashfield Road, Blackpool, FY2 0HB Contact Number: 01253352352 Age Range: 16+ yrs Local Education Authority: Blackpool Religious Character: Does not apply Admission Policy: Not applicable</p>	0.33 miles
	<p>Name: The Blackpool Sixth Form College Address: Highfurlong, Blackpool, FY3 7LR Contact Number: 01253394911 Age Range: 16+ yrs Local Education Authority: Blackpool Religious Character: Does not apply Admission Policy: Not applicable</p>	1.39 miles
	<p>Name: Baines School Address: Highcross Road, Poulton-le-Fylde, FY6 8BE Contact Number: 01253883019 Age Range: 11-16 yrs Local Education Authority: Lancashire Religious Character: None Admission Policy: Comprehensive</p>	1.81 miles
	<p>Name: Rossall School Address: Broadway, Fleetwood, FY7 8JW Contact Number: 01253774201 Age Range: 2-19 yrs Local Education Authority: Lancashire Religious Character: Anglican</p>	2.89 miles
	<p>Name: Fleetwood High School Address: Broadway, Fleetwood, FY7 8HE Contact Number: 01253876757 Age Range: 11-16 yrs Local Education Authority: Lancashire Religious Character: None</p>	3.86 miles

Disclaimer: The information represented in this section has been sourced from the Department of Education's 2019 results data s and is based on the property's postcode.




Percentage of A level students achieving at least three levels at grades AAB or better, at least two of which are in facilitating subjects

	Name	%
	Blackpool and the Fylde College	N/A
	The Blackpool Sixth Form College	9.1 %
	Baines School	N/A
	Rossall School	6.8 %
	Fleetwood High School	N/A
	Blackpool	9.7 %
	National	16.5 %

Disclaimer: The information represented in this section has been sourced from the Department of Education's 2019 results data set and is based on the property's postcode.

As well as actual pupil performance in tests and exams, an important Key Performance Indicator is that of Value Added. When pupils start a school, they all have varying levels of ability and social advantage. A school's Value Added score measures how much progress they have made from the beginning to the end of their compulsory secondary education (i.e. between the end of Key Stage 2 and the end of Key Stage 4). It is a quick measurement of the effect of a school on its pupils.

	Name	Value Added
	Blackpool and the Fylde College	N/A
	The Blackpool Sixth Form College	0.0
	Baines School	N/A
	Rossall School	0.0
	Fleetwood High School	N/A





Everything you want
to know about
local health services





How local are the health services?

We all want good access to local health facilities, wherever we live. To see how well **Chaucer Place** is served, we have set out below the exact locations of hospitals, Accident & Emergency centres, GPs, pharmacies, dentists, out-of-hours medical care and walk-in clinics. Where it's available, you will find more detailed information, including the names of practitioners and their contact details.

Hospitals	Approx Distance	
	Blackpool Victoria Hospital, Whinney Heys Road, Blackpool, Lancashire, FY3 8NR	2.48 miles
	Royal Preston Hospital, Sharoe Green Lane North, Preston, Lancashire, PR2 9HT	13.63 miles
	Southport And Formby District General Hospital, Southport, Merseyside, PR8 6PN	15.48 miles
	Royal Lancaster Infirmary, Ashton Road, Lancaster, Lancashire, LA1 4RP	15.77 miles
	Chorley And South Ribble Hospital, Chorley and South Ribble Hospital, Chorley, Lancashire, PR7 1PP	20.54 miles
A&E	Approx Distance	
	Blackpool Victoria Hospital, Whinney Heys Road, Blackpool, Lancashire, FY3 8NR	2.48 miles
	Royal Preston Hospital, Sharoe Green Lane North, Preston, Lancashire, PR2 9HT	13.63 miles
	Southport And Formby District General Hospital, Southport, Merseyside, PR8 6PN	15.48 miles
	Royal Lancaster Infirmary, Ashton Road, Lancaster, Lancashire, LA1 4RP	15.77 miles
	Chorley And South Ribble Hospital, Chorley and South Ribble Hospital, Chorley, Lancashire, PR7 1PP	20.54 miles

	Walk-in Clinics	Approx Distance
	Blackpool Victoria Hospital, Whinney Heys Road, Blackpool, Lancashire, FY3 8NR	2.48 miles
	Blackpool Nhs Walk-in Centre, Whitegate Health Centre, Blackpool, Lancashire, FY3 9ES	3.04 miles
	Same Day Health Centre – Fleetwood, Same Day Health Centre, Fleetwood, Lancashire, FY7 6HP	4.49 miles
	Same Day Health Centre – Morecambe, Same Day Health Centre, Morecambe, Lancashire, LA4 5LY	16.36 miles
	Ormskirk And District General Hospital, Ormskirk, Lancashire, L39 2AZ	21.08 miles
	GPs	Approx Distance
	DR PARR-BURMAN'S SURGERY, MOOR PARK HLTH & LEISURE, LANCASHIRE, FY2 0JG	0.63 miles
	GLENROYD MEDICAL CENTRE, MOOR PARK HLTH & LEIS CTR, LANCASHIRE, FY2 0JG	0.63 miles
	ASHFIELD MEDICAL CENTRE, MOOR PK HLTH/LEISURE CTR, LANCASHIRE, FY2 0JG	0.63 miles
	CARLETON PRACTICE, CARLETON SURGERY, POULTON-LE-FYLDE, FY6 7NJ	0.74 miles
	BEECHWOOD SURGERY, BEECHWOOD SURGERY, LANCASHIRE, FY5 5EJ	0.95 miles
	Dental Surgeons	Approx Distance
	Community Dental Services, Ashton Road, LANCASTER, Lancashire, LA1 4RR	15.65 miles
	Mayo Dental Clinic, Dallas Road, LANCASTER, Lancashire, LA1 1TW	15.83 miles
	Mayo Dental Clinic, 3 Meeting House Lane, LANCASTER, Lancashire, LA1 1TJ	15.92 miles
	Central Dental Practice, Telephone House, LANCASTER, Lancashire, LA1 1AB	15.94 miles
	Marketgate Dental Practice, Marketgate Shopping Centre, LANCASTER, Lancashire, LA1 1JF	16.03 miles

Disclaimer: The information represented in this section has been sourced from Experian and is based on the property's postcode.



Farrell Heyworth Landmark House 5a Cleveleys Avenue , Thornton-Cleveleys, FY5 2UH **01253 858200**



Everything you want
to know about
local policing





Understanding who polices your neighbourhood

When you move to a new area, you want to know the arrangements for local community policing. See below for essential information about police services near to **Chaucer Place**. We have included location and contact details for the police station and wherever possible, details of police officers assigned to the area.

Your policing neighbourhood

The name of your policing neighbourhood is **Ingthorpe** and it has a population of **6761**.

Your Local Policing Team

Name	Rank	Tel No.	E-mail
Martin Clarke	Constable		

Disclaimer: The information represented in this section has been sourced from data.police.uk.

Locations of Interest

Blackpool Police Station
 station
 Gerry Richardson Way off Clifton Road Blackpool **For Sat Nav please use FY4 4US

Blackpool Police Station is open 08:00 to 20:00 Monday to Friday, 09:00 to 18:00 Saturday and Sunday

Disclaimer: The information represented in this section has been sourced from data.police.uk.



Farrell Heyworth Landmark House 5a Cleveleys Avenue , Thornton-Cleveleys, FY5 2UH **01253 858200**

