



Everything you need to know about:

**Redcar Avenue,  
Thornton Cleveleys,  
FY5 2LG**



**Introduction**



**The Property**



**Local Authority**



**Transport Links**

**Education**



**Health**



**Local Policing**







### An invaluable insight into your new home

This i-PACK brochure offers an informed overview of **Redcar Avenue** as a potential new home, along with essential material about its surrounding area and its local community. It provides a valuable insight for any prospective owner or tenant.

We wanted to provide you with information that you can absorb quickly, so we have presented it as visually as possible, making use of maps, icons, tables, graphs and charts. Overall, the brochure contains information about:

- **The Property** - including property details, floor plans, room details, photographs and Energy Performance Certificate.
- **Transport** - including locations of bus and coach stops, railway stations and ferry ports.
- **Health** - including locations, contact details and organisational information on the nearest GPs, pharmacies, hospitals and dentists.
- **Local Policing** - including locations, contact details and information about local community policing and the nearest police station, as well as police officers assigned to the area.
- **Education** - including locations of infant, primary and secondary schools and Key Performance Indicators (KPIs) for each key stage.







REDCAR AVENUE, THORNTON CLEVELEYS £150,000



x3  
Bedrooms

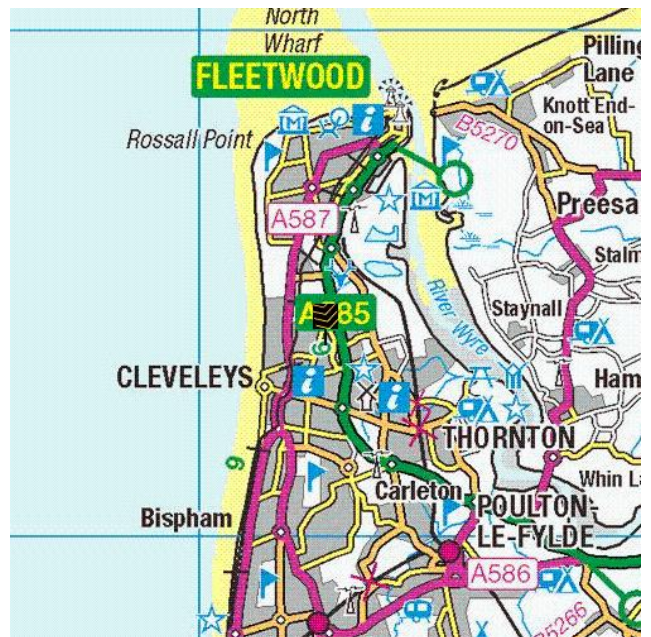
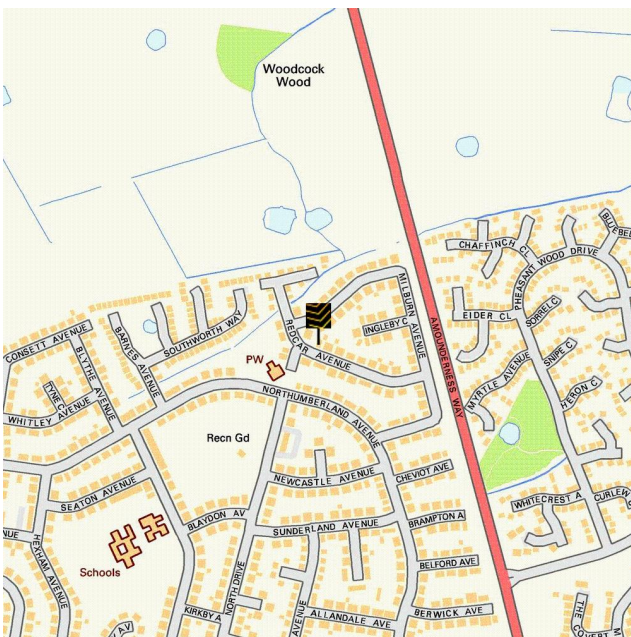


x0  
Living Rooms



x1  
Bathrooms

Where you are





i-PACK

REDCAR AVENUE, THORNTON CLEVELEYS  
£150,000



Lounge



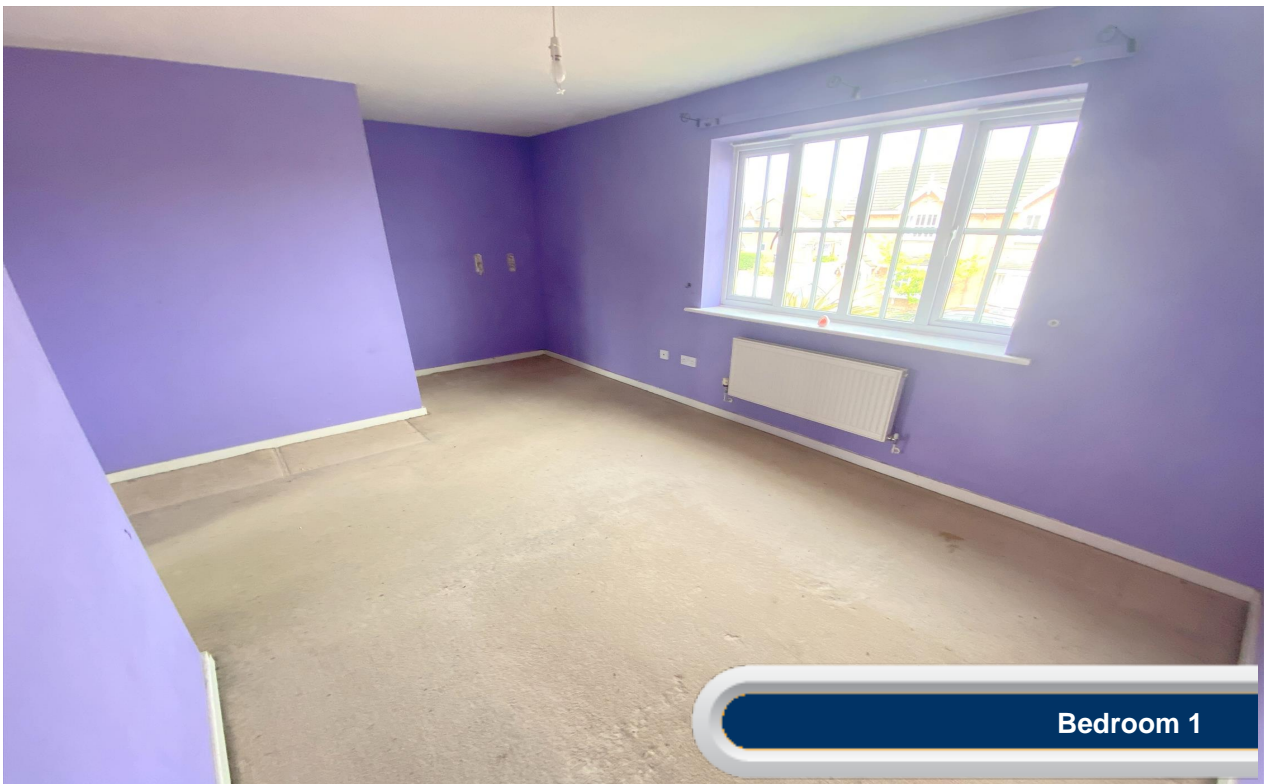
Diner



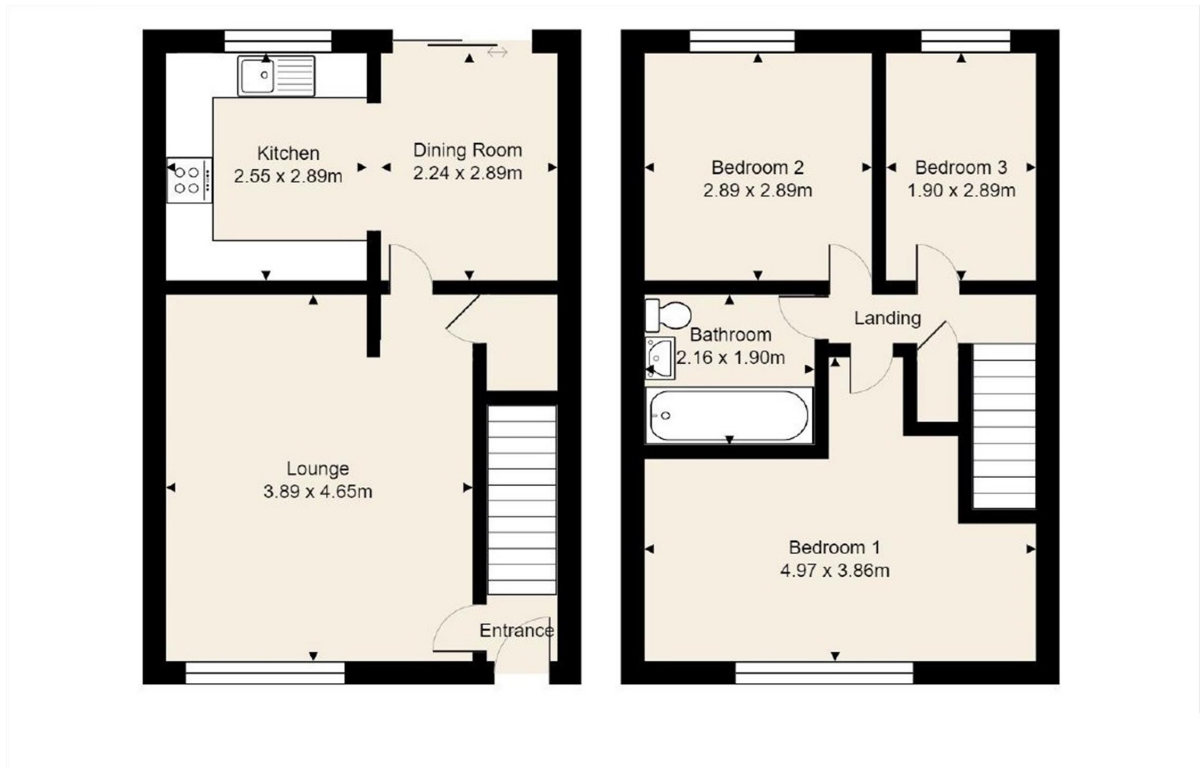
Farrell Heyworth Landmark House 5a Cleveleys Avenue , Thornton-Cleveleys, FY5 2UH 01253 858200

i-PACK

REDCAR AVENUE, THORNTON CLEVELEYS  
£150,000



Farrell Heyworth Landmark House 5a Cleveleys Avenue , Thornton-Cleveleys, FY5 2UH 01253 858200







Everything you want  
to know about  
local authorities







**Get to know your local authorities**

Local government directly affects quality of life, particularly when it comes to council tax, planning, waste disposal and the impact of local policies. You may want to investigate how this is likely to affect you if you decide to move. There are nearly 400 local authorities in England, with five different types of local government structure. These can be broadly divided into **single-tier** and **two-tier authorities**.

Single-tier authorities are **Metropolitan Authorities, London Boroughs** and **Unitary or Shire Authorities**.

Two-tier authorities have both a **County Council**, and a **District Council or City Council**.

There are also around 10,000 parish and town councils, effectively creating an additional tier in some areas - mostly, but not exclusively, in rural areas. The National Association of Local Councils (NALC) represents and works on behalf of these community councils and is a useful contact point.

The local authority locations and contact details for **Redcar Avenue** are:

Shire / County / District	Website	Address	Contact details
---------------------------	---------	---------	-----------------

**Disclaimer:** The information displayed above has been obtained using the property's postcode in proximity to its local authority. It is recommended that this information is independently verified.



Everything you want  
to know about  
transport links



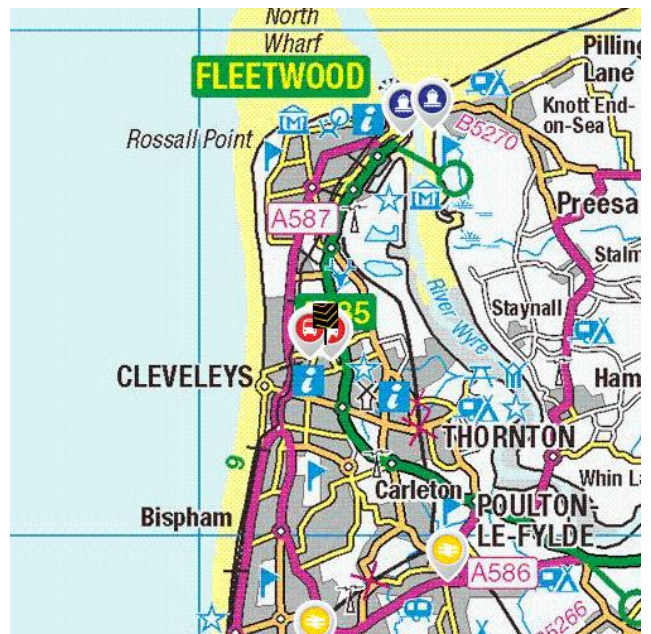
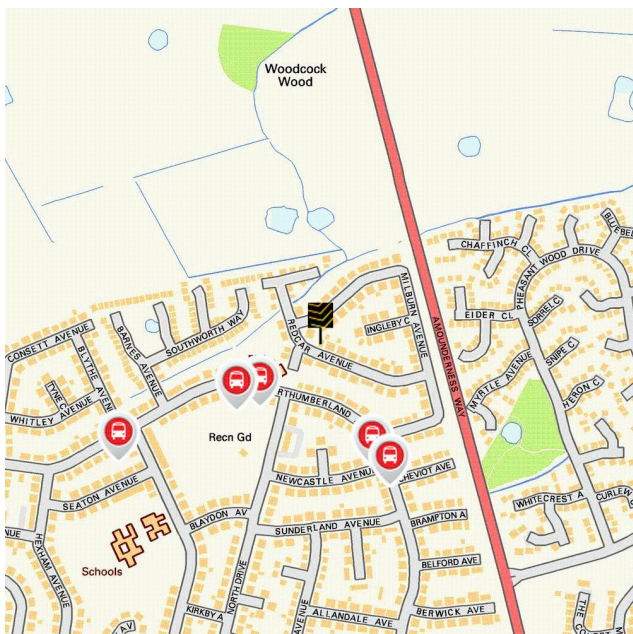







**Become familiar with public transport links**

Being able to choose to travel by public transport is important for many reasons. It helps to reduce congestion, provides access to work and education, and facilitates use of health and leisure facilities. If you or your family members travel abroad, access to the nearest ferry terminals is also likely to be a significant factor in choosing a new property. Using the maps below, you can pinpoint the precise locations of transport links for **Redcar Avenue**. Tables for each type of transport indicate the property's distance from the nearest bus stops, railway stations, coach stops and ferry terminals (providing that these facilities are within the scale proximity of the maps.)

**Transport Links**



	Airports	Approx Distance
	Blackpool International Airport	7.7 miles
	Liverpool John Lennon Airport	38.74 miles
	Manchester Airport	47.82 miles
	Ferry ports	Approx Distance
	Fleetwood for Knott End Ferry Landing	2.8 miles
	Knott End-On-Sea Ferry Landing	2.99 miles
	Heysham Ferry Terminal	11.02 miles
	Piel Island Ferry Landing	13.43 miles
	Roa Island Ferry Landing	14.03 miles
	Train Stations	Approx Distance
	Poulton-le-Fylde Rail Station	3.21 miles
	Layton (Lancs) Rail Station	3.73 miles
	Blackpool North Rail Station	4.73 miles
	Blackpool South Rail Station	6.31 miles
	Blackpool Pleasure Beach Rail Station	7.08 miles

**Disclaimer:** The information represented in this section has been sourced from the Department of Transport's Open Data and is based on the property's postcode. It is recommended that this information is independently verified.



**Farrell Heyworth** Landmark House 5a Cleveleys Avenue , Thornton-Cleveleys, FY5 2UH **01253 858200**



	Bus Stops	Approx Distance
	Park Terminus	0.08 miles
	ParkTerminus	0.1 miles
	Milburn Avenue	0.13 miles
	Newcastle Avenue	0.15 miles
	Northumberland Av	0.23 miles
	Coach Stops	Approx Distance
	Blackpool: Central Coach Station	5.33 miles
	Blackpool: Lonsdale Coach Park	5.81 miles
	Blackpool: Pontins Coach Stop	8.08 miles
	St Annes-on-the-Sea: Ashton Gdns Coach Stop	9.54 miles
	Garstang (Lancs): Crofters Hotel Coach Stop	10.22 miles

**Disclaimer:** The information represented in this section has been sourced from the Department of Transport's Open Data and is based on the property's postcode. It is recommended that this information is independently verified.



**Farrell Heyworth** Landmark House 5a Cleveleys Avenue , Thornton-Cleveleys, FY5 2UH **01253 858200**



Everything you want  
to know about  
local schools





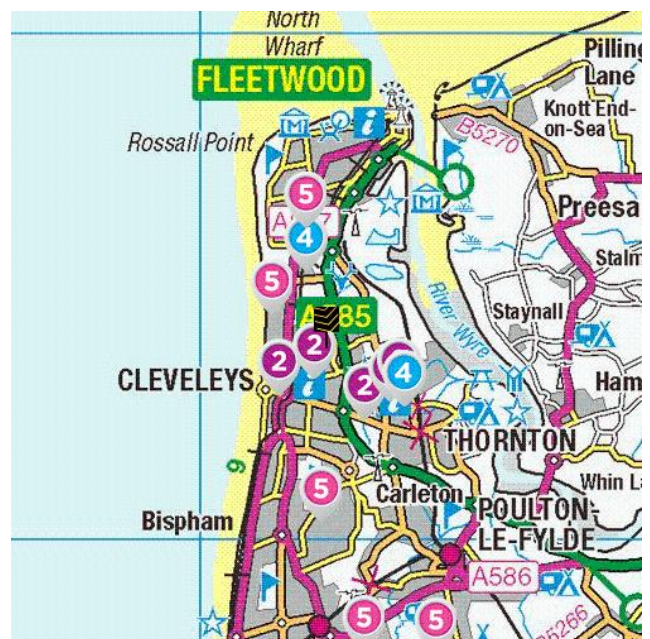
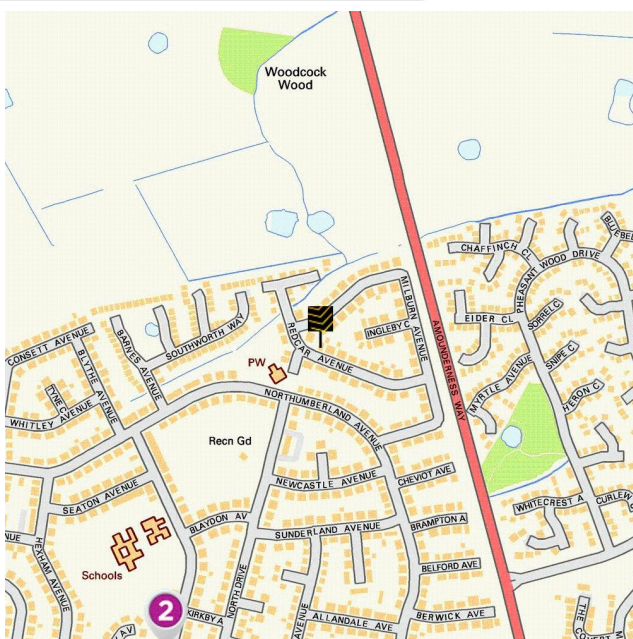


### How are local schools performing?

If schools are important to you, then this section sets out the published Key Performance Indicators for schools near to your prospective new home. Key Performance Indicators look primarily at how well pupils perform in their tests and examinations, as well as some other measures like attendance.

If you want to know more about a particular school or college, you can also visit the Ofsted website <http://www.ofsted.gov.uk/inspection-reports/find-inspection-report>

### Local Schools



The next page shows tables and charts divided into Key Stages and a list of respective schools local to **Redcar Avenue**. There are four main age-related Key Stages defined as:



Special schools are marked with this icon

Key Stage	Definition
Key Stage 1	Fits broadly with the first stage of education, i.e. ages 5-7.
Key Stage 2	Fits the later stage of primary education, often known as junior schools, i.e. ages 8-11. This takes pupils up to the standardised break at age 11 after which pupils generally change schools and transfer to secondary education.
Key Stage 3	Secondary education split between key stages 3 and 4, with key stage 3 covering ages 11-13.
Key Stage 4	Key Stage 4 (ages 14-16) covers the two year period of study for GCSE level examinations.
Key Stage 5	Beyond key stage 4 is 16+ or Sixth Form provision, sometimes unofficially referred to as Key Stage 5.



**Farrell Heyworth** Landmark House 5a Cleveleys Avenue , Thornton-Cleveleys, FY5 2UH **01253 858200**



	Key Stage 2 - Information	Approx Distance
	<p><b>Name:</b> Northfold Community Primary School  <b>Address:</b> Ringway, Thornton-Cleveleys, FY5 2NL  <b>Contact Number:</b> 01253854193  <b>Age Range:</b> 4-11 yrs  <b>Local Education Authority:</b> Lancashire  <b>Religious Character:</b> Does not apply</p>	0.32 miles
	<p><b>Name:</b> Thornton Cleveleys Manor Beach Primary School  <b>Address:</b> Manor Drive, Thornton-Cleveleys, FY5 1EU  <b>Contact Number:</b> 01253853879  <b>Age Range:</b> 5-11 yrs  <b>Local Education Authority:</b> Lancashire  <b>Religious Character:</b> Does not apply</p>	0.75 miles
	<p><b>Name:</b> Thornton Cleveleys Royles Brook Primary School  <b>Address:</b> Marsh Road, Thornton-Cleveleys, FY5 2TY  <b>Contact Number:</b> 01253821396  <b>Age Range:</b> 5-11 yrs  <b>Local Education Authority:</b> Lancashire  <b>Religious Character:</b> Does not apply</p>	0.91 miles
	<p><b>Name:</b> Sacred Heart Catholic Primary School, Thornton Cleveleys  <b>Address:</b> Heys Street, Thornton-Cleveleys, FY5 4HL  <b>Contact Number:</b> 01253821392  <b>Age Range:</b> 5-11 yrs  <b>Local Education Authority:</b> Lancashire  <b>Religious Character:</b> Roman Catholic</p>	0.97 miles
	<p><b>Name:</b> Thornton Primary School  <b>Address:</b> Heys Street, Thornton-Cleveleys, FY5 4JP  <b>Contact Number:</b> 01253821128  <b>Age Range:</b> 4-11 yrs  <b>Local Education Authority:</b> Lancashire  <b>Religious Character:</b> Does not apply</p>	1.01 miles

**Disclaimer:** The information represented in this section has been sourced from the Department of Education's 2019 results data s and is based on the property's postcode.




## Reading, Writing and Maths

	Name	Expected	Higher
	Northfold Community Primary School	86.0 %	18.0 %
	Thornton Cleveleys Manor Beach Primary School	59.0 %	6.0 %
	Thornton Cleveleys Royles Brook Primary School	67.0 %	7.0 %
	Sacred Heart Catholic Primary School, Thornton Cleveleys	69.0 %	19.0 %
	Thornton Primary School	61.0 %	9.0 %
	<b>Lancashire</b>	64.0 %	10.0 %
<b>National</b>	65.0 %	11.0 %	

## Primary Progress Measures

As well as actual pupil performance in tests and exams an important Key Performance Indicator is that of progress measures that compare the actual achievements of other pupils nationally with similar prior attainment. Any increase in attainment achieved by each pupil will be reflected in the schools progress scores. They are fairer to schools in challenging circumstances, as they recognise a school that is doing a good job with an intake with poor prior attainment

## Progress Measures for 2019




	Name	Math	Reading	Writing
	Northfold Community Primary School	1.6 %	0.2 %	0.0 %
	Thornton Cleveleys Manor Beach Primary School	-1.6 %	-1.4 %	-1.6 %
	Thornton Cleveleys Royles Brook Primary School	-0.5 %	-0.9 %	0.7 %
	Sacred Heart Catholic Primary School, Thornton Cleveleys	0.6 %	-0.9 %	-0.1 %
	Thornton Primary School	-0.5 %	-0.7 %	0.2 %

**Disclaimer:** The information represented in this section has been sourced from the Department of Education's 2019 results data set and is based on the property's postcode.



**Farrell Heyworth** Landmark House 5a Cleveleys Avenue , Thornton-Cleveleys, FY5 2UH **01253 858200**



	Key Stage 4 - Information	Approx Distance
	<p><b>Name:</b> Rossall School  <b>Address:</b> Broadway, Fleetwood, FY7 8JW  <b>Contact Number:</b> 01253774201  <b>Age Range:</b> 2-19 yrs  <b>Local Education Authority:</b> Lancashire  <b>Religious Character:</b> Anglican</p>	0.84 miles
	<p><b>Name:</b> Cardinal Allen Catholic High School, Fleetwood  <b>Address:</b> Melbourne Avenue, Fleetwood, FY7 8AY  <b>Contact Number:</b> 01253872659  <b>Age Range:</b> 11-16 yrs  <b>Local Education Authority:</b> Lancashire  <b>Religious Character:</b> Roman Catholic</p>	1.07 miles
	<p><b>Name:</b> Thornton-Cleveleys Red Marsh School   <b>Address:</b> Holly Road, Thornton-Cleveleys, FY5 4HH  <b>Contact Number:</b> 01253868451  <b>Age Range:</b> 2-19 yrs  <b>Local Education Authority:</b> Lancashire  <b>Religious Character:</b> Does not apply</p>	1.14 miles
	<p><b>Name:</b> Great Arley School   <b>Address:</b> Holly Road, Thornton-Cleveleys, FY5 4HH  <b>Contact Number:</b> 01253821072  <b>Age Range:</b> 4-16 yrs  <b>Local Education Authority:</b> Lancashire  <b>Religious Character:</b> Does not apply</p>	1.14 miles
	<p><b>Name:</b> Fleetwood High School  <b>Address:</b> Broadway, Fleetwood, FY7 8HE  <b>Contact Number:</b> 01253876757  <b>Age Range:</b> 11-16 yrs  <b>Local Education Authority:</b> Lancashire  <b>Religious Character:</b> None</p>	1.58 miles

**Disclaimer:** The information represented in this section has been sourced from the Department of Education's 2019 results data and is based on the property's postcode.



**Percentage of pupils achieving 5+ A\*-C/9-4 or equivalents including 9-4 in both English and mathematics GCSEs**

	Name	2019	2018	2017	2016
4	Rossall School	0.0 %	0.0 %	0.0 %	0.0 %
	Cardinal Allen Catholic High School, Fleetwood	72.0 %	57.0 %	58.0 %	52.0 %
	Thornton-Cleveleys Red Marsh School	N/A	N/A	N/A	N/A
	Great Arley School	N/A	N/A	N/A	N/A
	Fleetwood High School	41.0 %	48.0 %	44.0 %	32.0 %
	<b>Lancashire</b>	<b>66.0 %</b>	<b>66.1 %</b>	<b>61.7 %</b>	<b>58.5 %</b>
	<b>National</b>	<b>60.0 %</b>	<b>59.4 %</b>	<b>56.6 %</b>	<b>53.5 %</b>

**Disclaimer:** The information represented in this section has been sourced from the Department of Education's 2017 results data set and is based on the property's postcode.

**Average number of GCSE entries per pupil**

	Name	Number
4	Rossall School	1.4
	Cardinal Allen Catholic High School, Fleetwood	7.4
	Thornton-Cleveleys Red Marsh School	N/A
	Great Arley School	N/A
	Fleetwood High School	6.1
	<b>Lancashire</b>	<b>7.5</b>
	<b>National</b>	<b>7.1</b>

**Disclaimer:** The information represented in this section has been sourced from the Department of Education's 2019 results data set and is based on the property's postcode.





	Key Stage 5 - Information	Approx Distance
	<b>Name:</b> Rossall School <b>Address:</b> Broadway, Fleetwood, FY7 8JW <b>Contact Number:</b> 01253774201 <b>Age Range:</b> 2-19 yrs <b>Local Education Authority:</b> Lancashire <b>Religious Character:</b> Anglican	0.84 miles
	<b>Name:</b> Fleetwood High School <b>Address:</b> Broadway, Fleetwood, FY7 8HE <b>Contact Number:</b> 01253876757 <b>Age Range:</b> 11-16 yrs <b>Local Education Authority:</b> Lancashire <b>Religious Character:</b> None	1.58 miles
	<b>Name:</b> Blackpool and the Fylde College <b>Address:</b> Ashfield Road, Blackpool, FY2 0HB <b>Contact Number:</b> 01253352352 <b>Age Range:</b> 16+ yrs <b>Local Education Authority:</b> Blackpool <b>Religious Character:</b> Does not apply <b>Admission Policy:</b> Not applicable	2.06 miles
	<b>Name:</b> The Blackpool Sixth Form College <b>Address:</b> Highfurlong, Blackpool, FY3 7LR <b>Contact Number:</b> 01253394911 <b>Age Range:</b> 16+ yrs <b>Local Education Authority:</b> Blackpool <b>Religious Character:</b> Does not apply <b>Admission Policy:</b> Not applicable	3.66 miles
	<b>Name:</b> Baines School <b>Address:</b> Highcross Road, Poulton-le-Fylde, FY6 8BE <b>Contact Number:</b> 01253883019 <b>Age Range:</b> 11-16 yrs <b>Local Education Authority:</b> Lancashire <b>Religious Character:</b> None <b>Admission Policy:</b> Comprehensive	3.9 miles

**Disclaimer:** The information represented in this section has been sourced from the Department of Education's 2019 results data s and is based on the property's postcode.



**Percentage of A level students achieving at least three levels at grades AAB or better, at least two of which are in facilitating subjects**

	Name	%
5	Rossall School	6.8 %
	Fleetwood High School	N/A
	Blackpool and the Fylde College	N/A
	The Blackpool Sixth Form College	9.1 %
	Baines School	N/A
	<b>Lancashire</b>	<b>15.1 %</b>
	<b>National</b>	<b>16.5 %</b>

**Disclaimer:** The information represented in this section has been sourced from the Department of Education's 2019 results data set and is based on the property's postcode.

As well as actual pupil performance in tests and exams, an important Key Performance Indicator is that of Value Added. When pupils start a school, they all have varying levels of ability and social advantage. A school's Value Added score measures how much progress they have made from the beginning to the end of their compulsory secondary education (i.e. between the end of Key Stage 2 and the end of Key Stage 4). It is a quick measurement of the effect of a school on its pupils.

	Name	Value Added
5	Rossall School	0.0
	Fleetwood High School	N/A
	Blackpool and the Fylde College	N/A
	The Blackpool Sixth Form College	0.0
	Baines School	N/A





Everything you want  
to know about  
local health services







**How local are the health services?**

We all want good access to local health facilities, wherever we live. To see how well **Redcar Avenue** is served, we have set out below the exact locations of hospitals, Accident & Emergency centres, GPs, pharmacies, dentists, out-of-hours medical care and walk-in clinics. Where it's available, you will find more detailed information, including the names of practitioners and their contact details.

	Hospitals	Approx Distance
	Blackpool Victoria Hospital, Whinney Heys Road, Blackpool, Lancashire, FY3 8NR	4.76 miles
	Royal Lancaster Infirmary, Ashton Road, Lancaster, Lancashire, LA1 4RP	14.11 miles
	Royal Preston Hospital, Sharoe Green Lane North, Preston, Lancashire, PR2 9HT	14.71 miles
	Southport And Formby District General Hospital, Southport, Merseyside, PR8 6PN	17.77 miles
	Furness General Hospital, Dalton Lane, Barrow-In-Furness, Cumbria, LA14 4LF	18.55 miles
	A&E	Approx Distance
	Blackpool Victoria Hospital, Whinney Heys Road, Blackpool, Lancashire, FY3 8NR	4.76 miles
	Royal Lancaster Infirmary, Ashton Road, Lancaster, Lancashire, LA1 4RP	14.11 miles
	Royal Preston Hospital, Sharoe Green Lane North, Preston, Lancashire, PR2 9HT	14.71 miles
	Southport And Formby District General Hospital, Southport, Merseyside, PR8 6PN	17.77 miles
	Furness General Hospital, Dalton Lane, Barrow-In-Furness, Cumbria, LA14 4LF	18.55 miles

Walk-in Clinics		Approx Distance
	Same Day Health Centre – Fleetwood, Same Day Health Centre, Fleetwood, Lancashire, FY7 6HP	2.31 miles
	Blackpool Victoria Hospital, Whinney Heys Road, Blackpool, Lancashire, FY3 8NR	4.76 miles
	Blackpool Nhs Walk-in Centre, Whitegate Health Centre, Blackpool, Lancashire, FY3 9ES	5.28 miles
	Same Day Health Centre – Morecambe, Same Day Health Centre, Morecambe, Lancashire, LA4 5LY	14.4 miles
	Ormskirk And District General Hospital, Ormskirk, Lancashire, L39 2AZ	23.32 miles
GPs		Approx Distance
	THE THORNTON PRACTICE, THE THORNTON PRACTICE, LANCASHIRE, FY5 2TZ	1.02 miles
	THE VILLAGE PRACTICE, THORNTON MEDICAL CENTRE, FY5 2TZ	1.02 miles
	CLEVELEYS GROUP PRACTICE, THE HEALTH CENTRE, LANCASHIRE, FY5 3LF	1.14 miles
	THE CRESCENT SURGERY, CLEVELEYS HEALTH CENTRE, FY5 3LF	1.14 miles
	BROADWAY MEDICAL CENTRE 1, BROADWAY MEDICAL CENTRE, LANCASHIRE, FY7 8GU	1.63 miles
Dental Surgeons		Approx Distance
	Community Dental Services, Ashton Road, LANCASTER, Lancashire, LA1 4RR	13.99 miles
	Mayo Dental Clinic, Dallas Road, LANCASTER, Lancashire, LA1 1TW	14.13 miles
	Mayo Dental Clinic, 3 Meeting House Lane, LANCASTER, Lancashire, LA1 1TJ	14.21 miles
	Central Dental Practice, Telephone House, LANCASTER, Lancashire, LA1 1AB	14.24 miles
	Marketgate Dental Practice, Marketgate Shopping Centre, LANCASTER, Lancashire, LA1 1JF	14.33 miles

**Disclaimer:** The information represented in this section has been sourced from Experian and is based on the property's postcode.



**Farrell Heyworth** Landmark House 5a Cleveleys Avenue , Thornton-Cleveleys, FY5 2UH 01253 858200





Everything you want  
to know about  
local policing







### Understanding who polices your neighbourhood

When you move to a new area, you want to know the arrangements for local community policing. See below for essential information about police services near to **Redcar Avenue**. We have included location and contact details for the police station and wherever possible, details of police officers assigned to the area.

#### Your policing neighbourhood

The name of your policing neighbourhood is **Cleveleys Park** and it has a population of **5940**.

#### Your Local Policing Team

Name	Rank	Tel No.	E-mail
Sharon Hill	PCSO		

**Disclaimer:** The information represented in this section has been sourced from data.police.uk.

#### Locations of Interest

Fleetwood Police Station  
station  
North Church Street Fleetwood

Fleetwood Police Station is open 09:00 to 17:00 Monday to Friday, Closed Saturday and Sunday

**Disclaimer:** The information represented in this section has been sourced from data.police.uk.



**Farrell Heyworth** Landmark House 5a Cleveleys Avenue , Thornton-Cleveleys, FY5 2UH **01253 858200**

