



Everything you need to know about:

Rosebank,
Thornton Cleveleys,
FY5 3FL



Introduction



The Property



Local Authority



Transport Links

Education



Health



Local Policing





An invaluable insight into your new home

This i-PACK brochure offers an informed overview of **Rosebank** as a potential new home, along with essential material about its surrounding area and its local community. It provides a valuable insight for any prospective owner or tenant.

We wanted to provide you with information that you can absorb quickly, so we have presented it as visually as possible, making use of maps, icons, tables, graphs and charts. Overall, the brochure contains information about:

- **The Property** - including property details, floor plans, room details, photographs and Energy Performance Certificate.
- **Transport** - including locations of bus and coach stops, railway stations and ferry ports.
- **Health** - including locations, contact details and organisational information on the nearest GPs, pharmacies, hospitals and dentists.
- **Local Policing** - including locations, contact details and information about local community policing and the nearest police station, as well as police officers assigned to the area.
- **Education** - including locations of infant, primary and secondary schools and Key Performance Indicators (KPIs) for each key stage.



Farrell Heyworth Landmark House 5a Cleveleys Avenue , Thornton-Cleveleys, FY5 2UH **01253 858200**



ROSEBANK, THORNTON CLEVELEYS £114,995



x2
Bedrooms

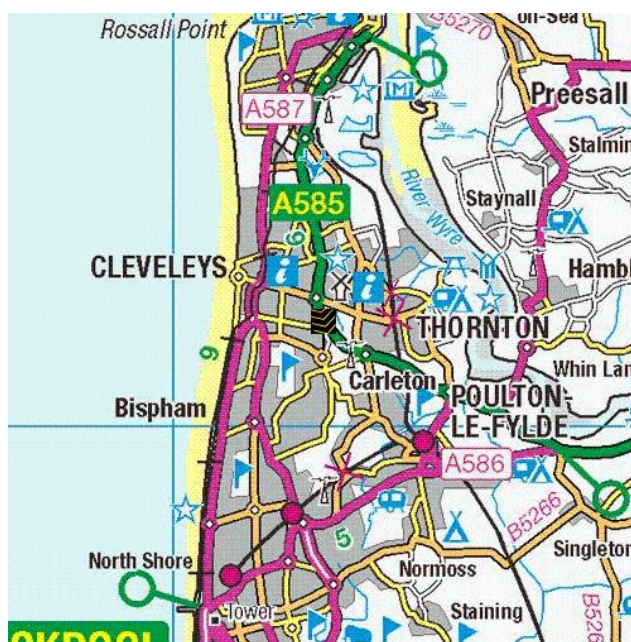
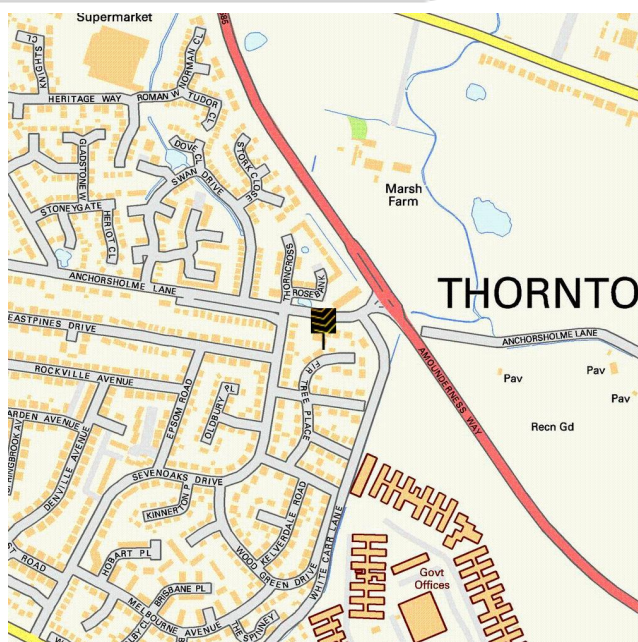


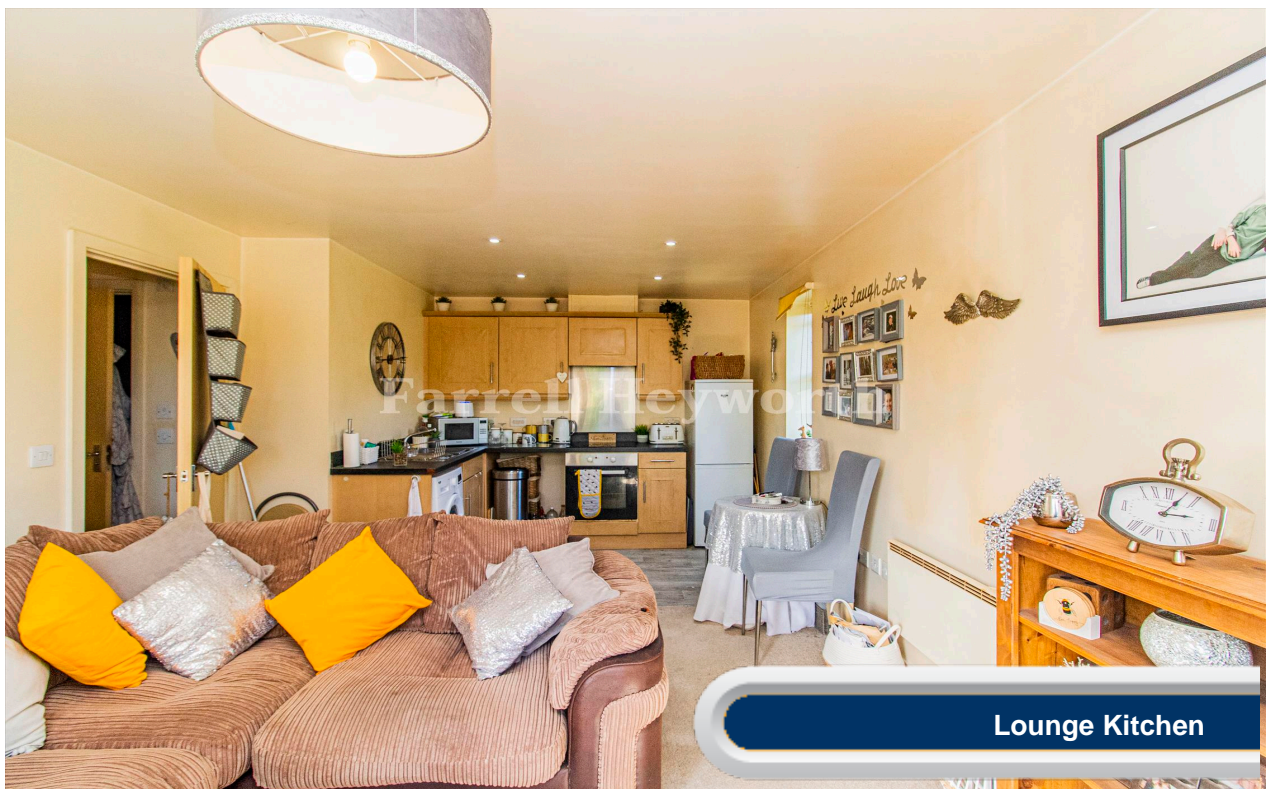
x1
Living Rooms



x1
Bathrooms

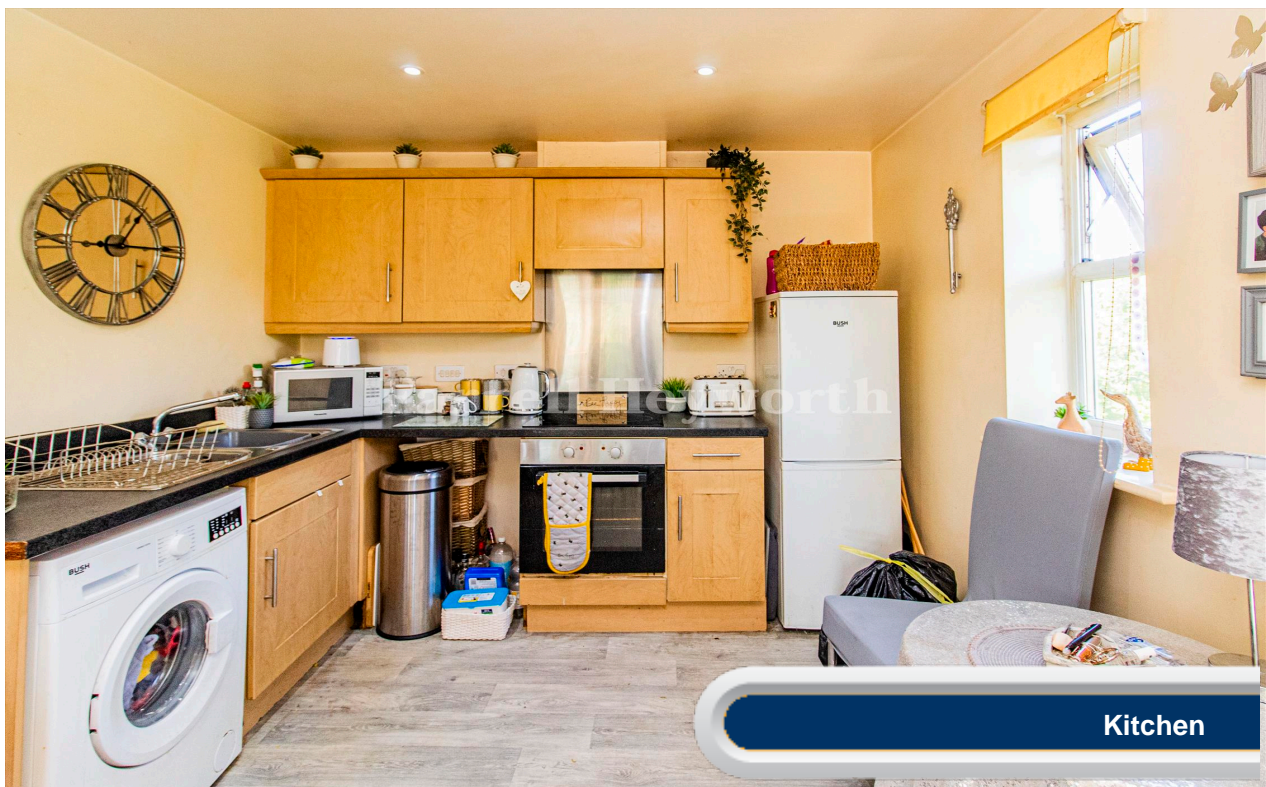
Where you are





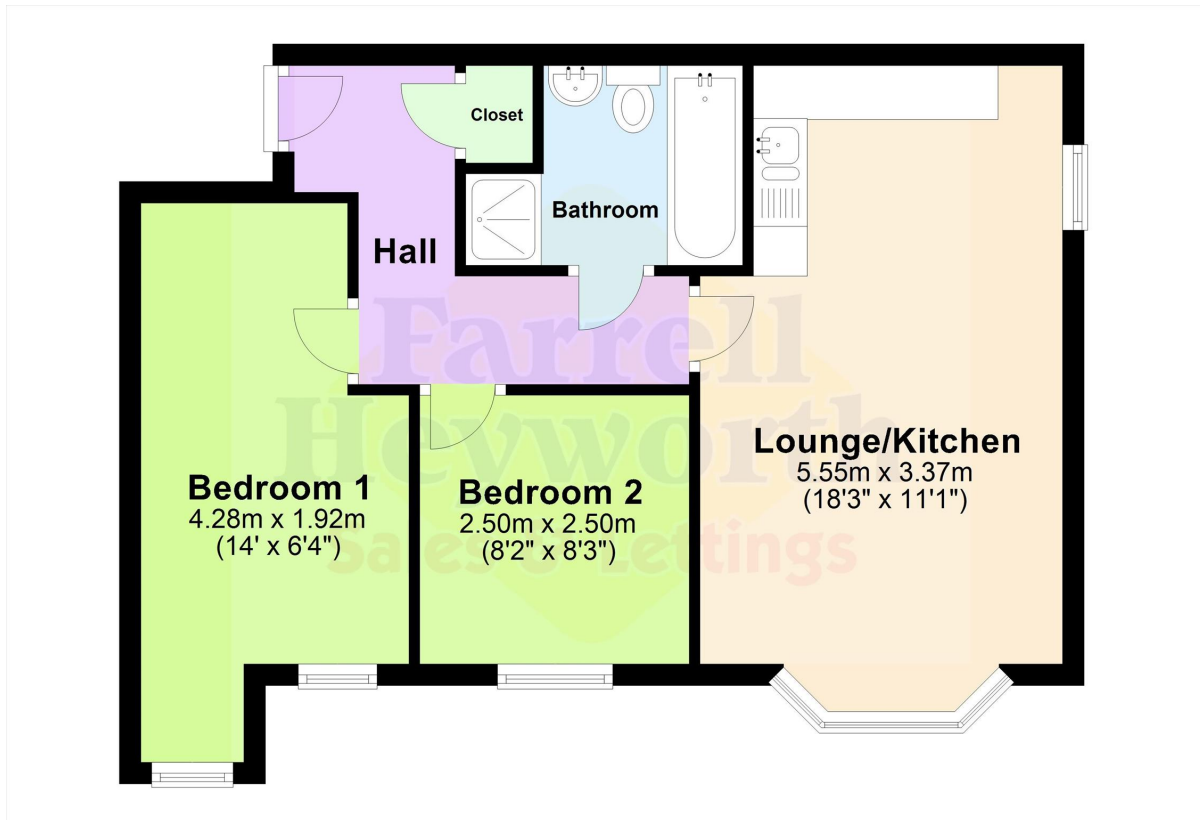


Lounge 2



Kitchen







Everything you want
to know about
local authorities





Get to know your local authorities

Local government directly affects quality of life, particularly when it comes to council tax, planning, waste disposal and the impact of local policies. You may want to investigate how this is likely to affect you if you decide to move. There are nearly 400 local authorities in England, with five different types of local government structure. These can be broadly divided into **single-tier** and **two-tier authorities**. Single-tier authorities are **Metropolitan Authorities, London Boroughs** and **Unitary or Shire Authorities**. Two-tier authorities have both a **County Council**, and a **District Council or City Council**. There are also around 10,000 parish and town councils, effectively creating an additional tier in some areas - mostly, but not exclusively, in rural areas. The National Association of Local Councils (NALC) represents and works on behalf of these community councils and is a useful contact point.

The local authority locations and contact details for **Rosebank** are:

Shire / County / District	Website	Address	Contact details
---------------------------	---------	---------	-----------------

Disclaimer: The information displayed above has been obtained using the property's postcode in proximity to its local authority. It is recommended that this information is independently verified.



Everything you want
to know about
transport links

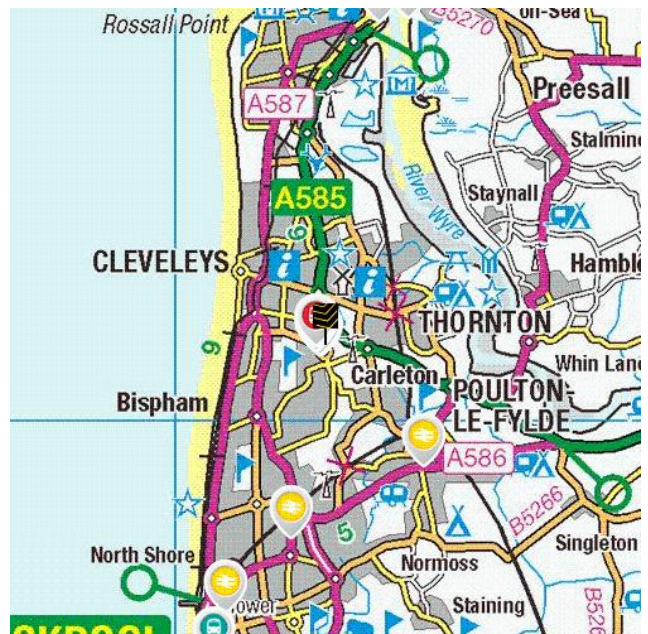
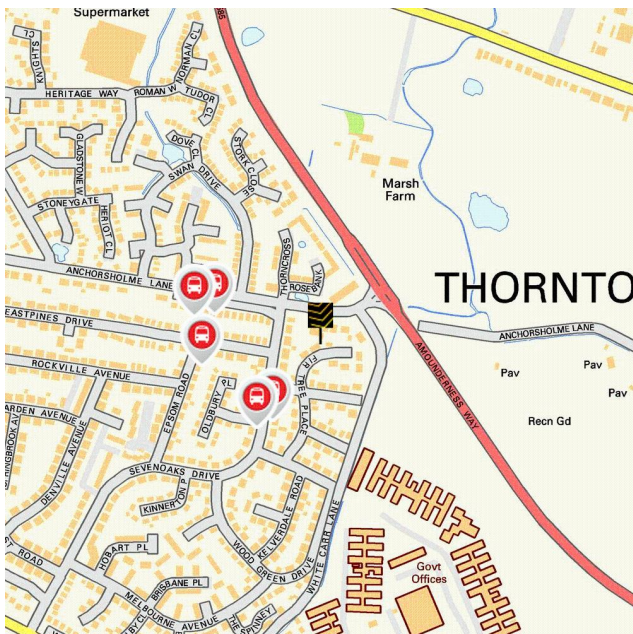







Become familiar with public transport links

Being able to choose to travel by public transport is important for many reasons. It helps to reduce congestion, provides access to work and education, and facilitates use of health and leisure facilities. If you or your family members travel abroad, access to the nearest ferry terminals is also likely to be a significant factor in choosing a new property. Using the maps below, you can pinpoint the precise locations of transport links for **Rosebank**. Tables for each type of transport indicate the property's distance from the nearest bus stops, railway stations, coach stops and ferry terminals (providing that these facilities are within the scale proximity of the maps.)

Transport Links



	Airports	Approx Distance
	Blackpool International Airport	6.34 miles
	Liverpool John Lennon Airport	37.3 miles
	Manchester Airport	46.56 miles
	Ferry ports	Approx Distance
	Fleetwood for Knott End Ferry Landing	4.1 miles
	Knott End-On-Sea Ferry Landing	4.22 miles
	Heysham Ferry Terminal	12.19 miles
	Piel Island Ferry Landing	14.84 miles
	Roa Island Ferry Landing	15.44 miles
	Train Stations	Approx Distance
	Poulton-le-Fylde Rail Station	1.87 miles
	Layton (Lancs) Rail Station	2.36 miles
	Blackpool North Rail Station	3.45 miles
	Blackpool South Rail Station	4.99 miles
	Blackpool Pleasure Beach Rail Station	5.76 miles

Disclaimer: The information represented in this section has been sourced from the Department of Transport's Open Data and is based on the property's postcode. It is recommended that this information is independently verified.



Farrell Heyworth Landmark House 5a Cleveleys Avenue , Thornton-Cleveleys, FY5 2UH 01253 858200

	Bus Stops	Approx Distance
	Grassington Place	0.08 miles
	Grassington Place	0.1 miles
	Swan Drive	0.11 miles
	Epsom Road	0.12 miles
	Swan Drive	0.13 miles
	Coach Stops	Approx Distance
	Blackpool: Central Coach Station	4.05 miles
	Blackpool: Lonsdale Coach Park	4.5 miles
	Blackpool: Pontins Coach Stop	6.74 miles
	St Annes-on-the-Sea: Ashton Gdns Coach Stop	8.15 miles
	Ansdell Coach Stop	9.0 miles

Disclaimer: The information represented in this section has been sourced from the Department of Transport's Open Data and is based on the property's postcode. It is recommended that this information is independently verified.



Farrell Heyworth Landmark House 5a Cleveleys Avenue , Thornton-Cleveleys, FY5 2UH **01253 858200**



Everything you want
to know about
local schools



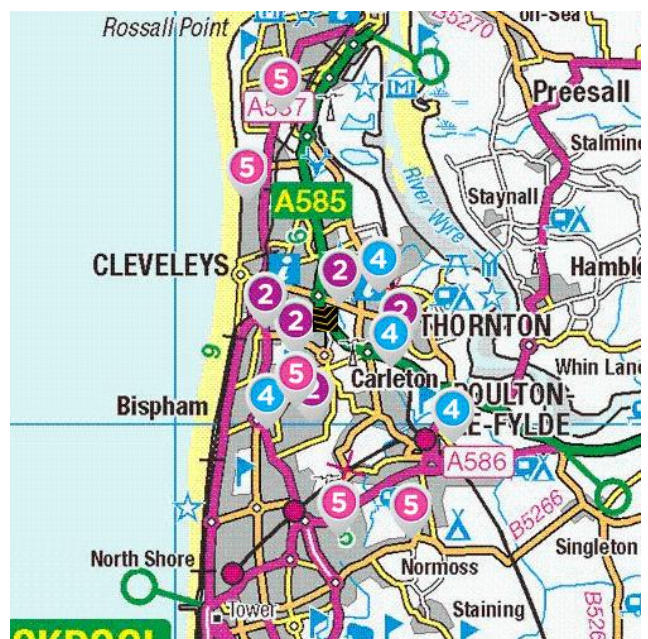
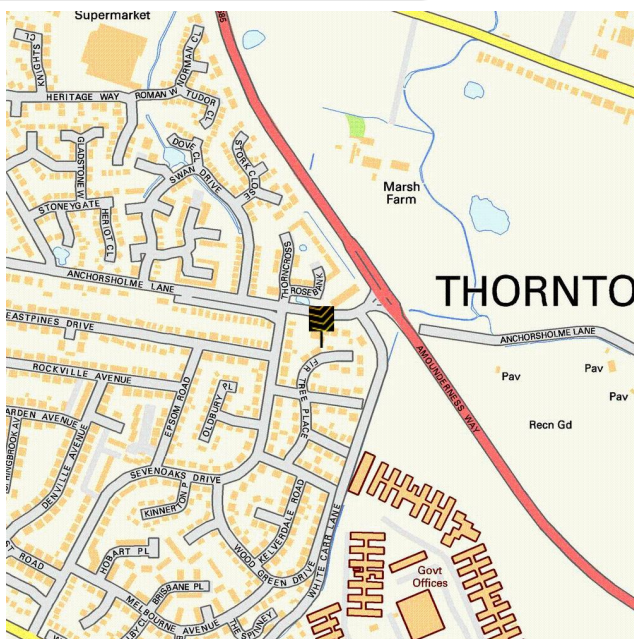


How are local schools performing?

If schools are important to you, then this section sets out the published Key Performance Indicators for schools near to your prospective new home. Key Performance Indicators look primarily at how well pupils perform in their tests and examinations, as well as some other measures like attendance.

If you want to know more about a particular school or college, you can also visit the Ofsted website <http://www.ofsted.gov.uk/inspection-reports/find-inspection-report>

Local Schools



The next page shows tables and charts divided into Key Stages and a list of respective schools local to **Rosebank**. There are four main age-related Key Stages defined as:



Special schools are marked with this icon

Key Stage	Definition
Key Stage 1	Fits broadly with the first stage of education, i.e. ages 5-7.
Key Stage 2	Fits the later stage of primary education, often known as junior schools, i.e. ages 8-11. This takes pupils up to the standardised break at age 11 after which pupils generally change schools and transfer to secondary education.
Key Stage 3	Secondary education split between key stages 3 and 4, with key stage 3 covering ages 11-13.
Key Stage 4	Key Stage 4 (ages 14-16) covers the two year period of study for GCSE level examinations.
Key Stage 5	Beyond key stage 4 is 16+ or Sixth Form provision, sometimes unofficially referred to as Key Stage 5.



Farrell Heyworth Landmark House 5a Cleveleys Avenue , Thornton-Cleveleys, FY5 2UH **01253 858200**

	Key Stage 2 - Information	Approx Distance
	<p>Name: Anchorsholme Primary Academy Address: Eastpines Drive, Thornton-Cleveleys, FY5 3RX Contact Number: 01253855215 Age Range: 5-11 yrs Local Education Authority: Blackpool Religious Character: Does not apply</p>	0.37 miles
	<p>Name: Thornton Cleveleys Royles Brook Primary School Address: Marsh Road, Thornton-Cleveleys, FY5 2TY Contact Number: 01253821396 Age Range: 5-11 yrs Local Education Authority: Lancashire Religious Character: Does not apply</p>	0.65 miles
	<p>Name: St Teresa's Catholic Primary School Address: St George's Avenue, Thornton-Cleveleys, FY5 3JW Contact Number: 01253852457 Age Range: 4-11 yrs Local Education Authority: Blackpool Religious Character: Roman Catholic</p>	0.81 miles
	<p>Name: Kinraig Primary School Address: Kinraig Road, Blackpool, FY2 0HN Contact Number: 01253354059 Age Range: 2-11 yrs Local Education Authority: Blackpool Religious Character: Does not apply</p>	0.84 miles
	<p>Name: Thornton Cleveleys Baines Endowed Voluntary Controlled Primary School Address: Station Road, Thornton-Cleveleys, FY5 5HY Contact Number: 01253823420 Age Range: 4-11 yrs Local Education Authority: Lancashire Religious Character: None</p>	0.92 miles

Disclaimer: The information represented in this section has been sourced from the Department of Education's 2019 results data s and is based on the property's postcode.



Reading, Writing and Maths

	Name	Expected	Higher
2	Anchorsholme Primary Academy	69.0 %	8.0 %
	Thornton Cleveleys Royles Brook Primary School	67.0 %	7.0 %
	St Teresa's Catholic Primary School	78.0 %	7.0 %
	Kincraig Primary School	87.0 %	17.0 %
	Thornton Cleveleys Baines Endowed Voluntary Controlled Primary School	66.0 %	7.0 %
	Blackpool	67.0 %	7.0 %
National	65.0 %	11.0 %	

Primary Progress Measures

As well as actual pupil performance in tests and exams an important Key Performance Indicator is that of progress measures that compare the actual achievements of other pupils nationally with similar prior attainment. Any increase in attainment achieved by each pupil will be reflected in the schools progress scores. They are fairer to schools in challenging circumstances, as they recognise a school that is doing a good job with an intake with poor prior attainment





Progress Measures for 2019

	Name	Math	Reading	Writing
2	Anchorsholme Primary Academy	0.5 %	-1.6 %	-2.2 %
	Thornton Cleveleys Royles Brook Primary School	-0.5 %	-0.9 %	0.7 %
	St Teresa's Catholic Primary School	-0.4 %	1.1 %	-0.4 %
	Kincraig Primary School	2.7 %	3.0 %	4.7 %
	Thornton Cleveleys Baines Endowed Voluntary Controlled Primary School	-1.3 %	-1.6 %	-1.9 %

Disclaimer: The information represented in this section has been sourced from the Department of Education's 2019 results data set and is based on the property's postcode.



Farrell Heyworth Landmark House 5a Cleveleys Avenue , Thornton-Cleveleys, FY5 2UH 01253 858200

	Key Stage 4 - Information	Approx Distance
	<p>Name: Millfield Science & Performing Arts College Address: Belvedere Road, Thornton-Cleveleys, FY5 5DG Contact Number: 01253865929 Age Range: 11-16 yrs Local Education Authority: Lancashire Religious Character: Does not apply</p>	0.82 miles
	<p> Name: Great Arley School Address: Holly Road, Thornton-Cleveleys, FY5 4HH Contact Number: 01253821072 Age Range: 4-16 yrs Local Education Authority: Lancashire Religious Character: Does not apply</p>	1.01 miles
	<p> Name: Thornton-Cleveleys Red Marsh School Address: Holly Road, Thornton-Cleveleys, FY5 4HH Contact Number: 01253868451 Age Range: 2-19 yrs Local Education Authority: Lancashire Religious Character: Does not apply</p>	1.01 miles
	<p>Name: Montgomery High School Address: All Hallows Road, Blackpool, FY2 0AZ Contact Number: 01253356271 Age Range: 11-16 yrs Local Education Authority: Blackpool Religious Character: None</p>	1.16 miles
	<p> Name: Brookfield School Address: Fouldrey Avenue, 881188, FY6 7HE Contact Number: 01253886895 Age Range: 11-16 yrs Local Education Authority: Lancashire Religious Character: Does not apply</p>	1.89 miles

Disclaimer: The information represented in this section has been sourced from the Department of Education's 2019 results data set and is based on the property's postcode.



Percentage of pupils achieving 5+ A*-C/9-4 or equivalents including 9-4 in both English and mathematics GCSEs

	Name	2019	2018	2017	2016
4	Millfield Science & Performing Arts College	59.0 %	68.0 %	63.0 %	72.0 %
	Great Arley School	N/A	N/A	N/A	N/A
	Thornton-Cleveleys Red Marsh School	N/A	N/A	N/A	N/A
	Montgomery High School	57.0 %	51.0 %	51.0 %	58.0 %
	Brookfield School	6.0 %	0.0 %	0.0 %	0.0 %
	Lancashire	66.0 %	66.1 %	61.7 %	58.5 %
	National	60.0 %	59.4 %	56.6 %	53.5 %

Disclaimer: The information represented in this section has been sourced from the Department of Education's 2017 results data set and is based on the property's postcode.

Average number of GCSE entries per pupil

	Name	Number
4	Millfield Science & Performing Arts College	7.3
	Great Arley School	N/A
	Thornton-Cleveleys Red Marsh School	N/A
	Montgomery High School	7.0
	Brookfield School	2.4
	Lancashire	7.5
	National	7.1

Disclaimer: The information represented in this section has been sourced from the Department of Education's 2019 results data set and is based on the property's postcode.




	Key Stage 5 - Information	Approx Distance
	<p>Name: Blackpool and the Fylde College Address: Ashfield Road, Blackpool, FY2 0HB Contact Number: 01253352352 Age Range: 16+ yrs Local Education Authority: Blackpool Religious Character: Does not apply Admission Policy: Not applicable</p>	0.75 miles
	<p>Name: Rossall School Address: Broadway, Fleetwood, FY7 8JW Contact Number: 01253774201 Age Range: 2-19 yrs Local Education Authority: Lancashire Religious Character: Anglican</p>	2.13 miles
	<p>Name: The Blackpool Sixth Form College Address: Highfurlong, Blackpool, FY3 7LR Contact Number: 01253394911 Age Range: 16+ yrs Local Education Authority: Blackpool Religious Character: Does not apply Admission Policy: Not applicable</p>	2.23 miles
	<p>Name: Baines School Address: Highcross Road, Poulton-le-Fylde, FY6 8BE Contact Number: 01253883019 Age Range: 11-16 yrs Local Education Authority: Lancashire Religious Character: None Admission Policy: Comprehensive</p>	2.48 miles
	<p>Name: Fleetwood High School Address: Broadway, Fleetwood, FY7 8HE Contact Number: 01253876757 Age Range: 11-16 yrs Local Education Authority: Lancashire Religious Character: None</p>	3.02 miles

Disclaimer: The information represented in this section has been sourced from the Department of Education's 2019 results data s and is based on the property's postcode.




Percentage of A level students achieving at least three levels at grades AAB or better, at least two of which are in facilitating subjects

	Name	%
	Blackpool and the Fylde College	N/A
	Rossall School	6.8 %
	The Blackpool Sixth Form College	9.1 %
	Baines School	N/A
	Fleetwood High School	N/A
	Blackpool	9.7 %
	National	16.5 %

Disclaimer: The information represented in this section has been sourced from the Department of Education's 2019 results data set and is based on the property's postcode.

As well as actual pupil performance in tests and exams, an important Key Performance Indicator is that of Value Added. When pupils start a school, they all have varying levels of ability and social advantage. A school's Value Added score measures how much progress they have made from the beginning to the end of their compulsory secondary education (i.e. between the end of Key Stage 2 and the end of Key Stage 4). It is a quick measurement of the effect of a school on its pupils.

	Name	Value Added
	Blackpool and the Fylde College	N/A
	Rossall School	0.0
	The Blackpool Sixth Form College	0.0
	Baines School	N/A
	Fleetwood High School	N/A





Everything you want
to know about
local health services





How local are the health services?

We all want good access to local health facilities, wherever we live. To see how well **Rosebank** is served, we have set out below the exact locations of hospitals, Accident & Emergency centres, GPs, pharmacies, dentists, out-of-hours medical care and walk-in clinics. Where it's available, you will find more detailed information, including the names of practitioners and their contact details.

Hospitals	Approx Distance	
	Blackpool Victoria Hospital, Whinney Heys Road, Blackpool, Lancashire, FY3 8NR	3.34 miles
	Royal Preston Hospital, Sharoe Green Lane North, Preston, Lancashire, PR2 9HT	13.83 miles
	Royal Lancaster Infirmary, Ashton Road, Lancaster, Lancashire, LA1 4RP	15.0 miles
	Southport And Formby District General Hospital, Southport, Merseyside, PR8 6PN	16.34 miles
	Furness General Hospital, Dalton Lane, Barrow-In-Furness, Cumbria, LA14 4LF	19.97 miles
A&E	Approx Distance	
	Blackpool Victoria Hospital, Whinney Heys Road, Blackpool, Lancashire, FY3 8NR	3.34 miles
	Royal Preston Hospital, Sharoe Green Lane North, Preston, Lancashire, PR2 9HT	13.83 miles
	Royal Lancaster Infirmary, Ashton Road, Lancaster, Lancashire, LA1 4RP	15.0 miles
	Southport And Formby District General Hospital, Southport, Merseyside, PR8 6PN	16.34 miles
	Furness General Hospital, Dalton Lane, Barrow-In-Furness, Cumbria, LA14 4LF	19.97 miles

	Walk-in Clinics	Approx Distance
	Blackpool Victoria Hospital, Whinney Heys Road, Blackpool, Lancashire, FY3 8NR	3.34 miles
	Same Day Health Centre – Fleetwood, Same Day Health Centre, Fleetwood, Lancashire, FY7 6HP	3.62 miles
	Blackpool Nhs Walk-in Centre, Whitegate Health Centre, Blackpool, Lancashire, FY3 9ES	3.91 miles
	Same Day Health Centre – Morecambe, Same Day Health Centre, Morecambe, Lancashire, LA4 5LY	15.52 miles
	Ormskirk And District General Hospital, Ormskirk, Lancashire, L39 2AZ	21.88 miles
	GPs	Approx Distance
	BEECHWOOD SURGERY, BEECHWOOD SURGERY, LANCASHIRE, FY5 5EJ	0.59 miles
	THE THORNTON PRACTICE, THE THORNTON PRACTICE, LANCASHIRE, FY5 2TZ	0.6 miles
	THE VILLAGE PRACTICE, THORNTON MEDICAL CENTRE, FY5 2TZ	0.6 miles
	THE CRESCENT SURGERY, CLEVELEYS HEALTH CENTRE, FY5 3LF	1.0 miles
	CLEVELEYS GROUP PRACTICE, THE HEALTH CENTRE, LANCASHIRE, FY5 3LF	1.0 miles
	Dental Surgeons	Approx Distance
	Community Dental Services, Ashton Road, LANCASTER, Lancashire, LA1 4RR	14.88 miles
	Mayo Dental Clinic, Dallas Road, LANCASTER, Lancashire, LA1 1TW	15.05 miles
	Mayo Dental Clinic, 3 Meeting House Lane, LANCASTER, Lancashire, LA1 1TJ	15.14 miles
	Central Dental Practice, Telephone House, LANCASTER, Lancashire, LA1 1AB	15.16 miles
	Marketgate Dental Practice, Marketgate Shopping Centre, LANCASTER, Lancashire, LA1 1JF	15.25 miles

Disclaimer: The information represented in this section has been sourced from Experian and is based on the property's postcode.



Farrell Heyworth Landmark House 5a Cleveleys Avenue , Thornton-Cleveleys, FY5 2UH **01253 858200**



Everything you want
to know about
local policing





Understanding who polices your neighbourhood

When you move to a new area, you want to know the arrangements for local community policing. See below for essential information about police services near to **Rosebank**. We have included location and contact details for the police station and wherever possible, details of police officers assigned to the area.

Your policing neighbourhood

The name of your policing neighbourhood is **Victoria - Wyre** and it has a population of **5951**.

Your Local Policing Team			
Name	Rank	Tel No.	E-mail
Lareina Cortinas	PCSO		

Disclaimer: The information represented in this section has been sourced from data.police.uk.

Locations of Interest

Fleetwood Police Station
station
North Church Street Fleetwood

Fleetwood Police Station is open 09:00 to 17:00 Monday to Friday, Closed Saturday and Sunday

Disclaimer: The information represented in this section has been sourced from data.police.uk.



Farrell Heyworth Landmark House 5a Cleveleys Avenue , Thornton-Cleveleys, FY5 2UH **01253 858200**

