



87 Drake Hall

Westhoughton, Bolton, BL5 2RA

STUNNING two bedroom first floor flat located in a very popular residential area, close to all local amenities, shops, schools, immaculately presented throughout, offers excellent accommodation, comprising:- entrance, stairs leading to first floor, fabulous open plan lounge dining kitchen with integrated appliances, two double bedrooms and a bathroom. OFFERED WITH NO ONWARD CHAIN..... EARLY VIEWING IS ESSENTIAL TO FULLY APPRECIATE.

Offers In The Region Of £129,950

87 Drake Hall

Westhoughton, Bolton, BL5 2RA



- TWO BEDROOM FIRST FLOOR FLAT
- FULLY DOUBLE GLAZED & GAS CENTRAL HEATING
- EARLY VIEWING ADVISED
- TWO DOUBLE BEDROOMS
- WALKING DISTANCE TO DAISY HILL TRAIN STATION
- ALLOCATED PARKING SPACE
- QUALITY FITTED KITCHEN & BATHROOM
- OFFERED WITH NO ONWARD CHAIN

ENTRANCE

LOUNGE

14'2" x 12'0" (4.33 x 3.67m)

KITCHEN

8'10" x 8'10" (2.71m x 2.71m)

BEDROOM ONE

10'1" x 9'11" (3.09m x 3.03m)

BEDROOM TWO

9'10" x 9'5" (3.01m x 2.89m)

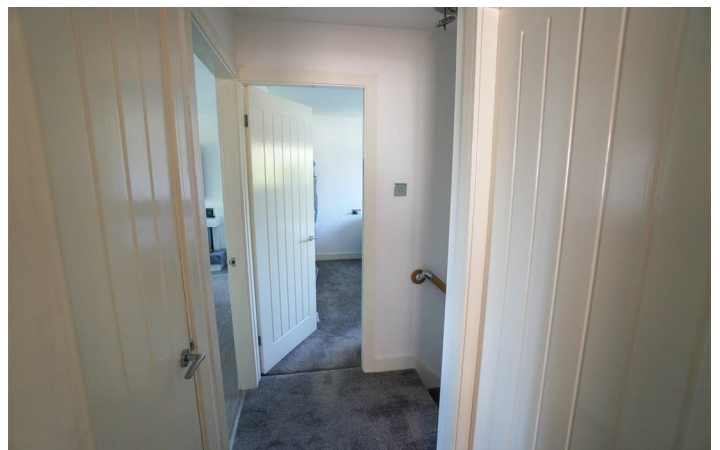
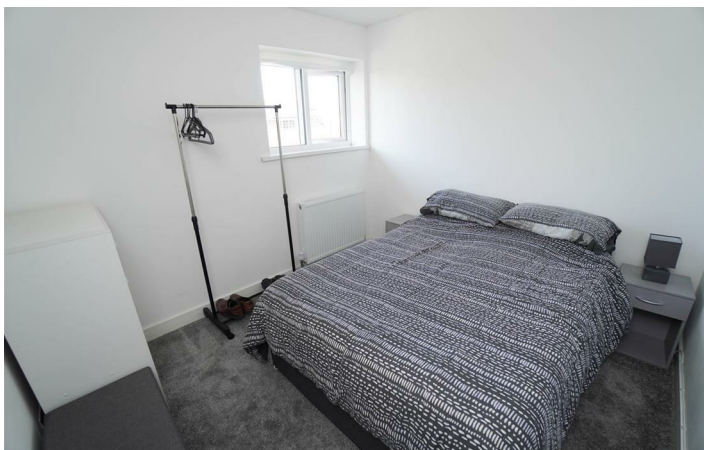
BATHROOM

7'1" x 6'2" (2.18m x 1.89m)

EXTERIOR



[Directions](#)





Floor Plan

These particulars, whilst believed to be accurate are set out as a general outline only for guidance and do not constitute any part of an offer or contract. Intending purchasers should not rely on them as statements of representation of fact, but must satisfy themselves by inspection or otherwise as to their accuracy. No person in this firm's employment has the authority to make or give any representation or warranty in respect of the property.

67 Church Street, Westhoughton, Bolton, BL5 3RZ
Tel: 01942 842409 Email: lettings@copelandsproperty.co.uk www.copelandsproperty.co.uk

