

2 CANDLEMAKERS CROFT
CLITHEROE
BB7 1AB

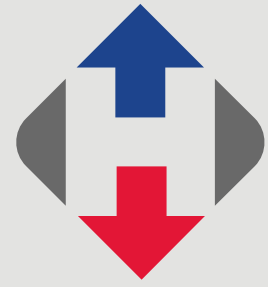
£249,950



- Well-presented semi-detached home
- Living room & dining kitchen
- 2 double bedrooms, master en-suite
- 3-piece shower room
- Gardens & driveway
- Gated development in Clitheroe centre
- Gas CH & double glazing throughout
- 66 m2 (710 sq ft) approx.

Built in the early 2000s and well-maintained since, this two bedroom semi-detached home is situated on a small, gated development in the town centre. Clitheroe's many amenities are just around the corner, however, the development occupies a quiet position away from the town centre's hustle and bustle.

Accommodation comprises a living room with square bay window, good-sized dining kitchen with French doors to the rear garden and a cloakroom with a 2-piece suite. On the first floor are two good-sized double bedrooms, both with fitted wardrobes, with the master enjoying a 3-piece en-suite shower room, additionally there is a 3-piece house shower room. The property enjoys a lawned front garden and a private, enclosed rear garden, both of which are relatively low maintenance.



LOCATION: From our sales office in the town centre, drive down Castle Street, turn right onto Wellgate and right again onto Lowergate. Take a left turn onto Candlemakers Court and then bear left through the gates onto Candlemakers Croft.

ACCOMMODATION: (Imperial dimensions in brackets: all sizes approximate):-

LIVING ROOM: 4.0m x 4.1m (13'1" x 13'5"); with composite external door, electric stove in a feature surround, 3 wall light points, television point, telephone point and feature square bay window.

DINING KITCHEN: 4.0m x 4.0m (13'3" x 13'1"); with a range of modern fitted base and matching wall storage units with complementary work surface, built-in electric oven, 4-ring electric hob with stainless steel extractor over, built-in fridge-freezer, plumbed and drained for an automatic washing machine, one-and-a-half bowl sink unit, part-tiled walls, low voltage lighting and glazed external door.

CLOAKROOM: 2-piece suite comprising a low level w.c., wash-hand basin and extractor fan.

FIRST FLOOR:

LANDING: With attic access point and airing cupboard.

BEDROOM ONE: 3.0m x 2.7m (9'10" x 8'10"); with built-in wardrobes to one wall, television point and 2 wall light points.

EN-SUITE SHOWER ROOM: 3-piece suite in white comprising a low level w.c., vanity wash-hand basin and a corner shower enclosure with plumbed shower, part-tiled walls and extractor fan.

BEDROOM TWO: 4.0m x 3.0m (13'0" x 9'11"); with built-in wardrobes to 1 wall.

SHOWER ROOM: 3-piece suite in white comprising a low level w.c., vanity wash-hand basin and a corner shower enclosure with plumbed shower, low voltage lighting, extractor fan and heated stainless steel towel rail.





OUTSIDE: To the front of the property is a lawned garden. A pathway leads around the side of the property to a gated enclosed low maintenance rear garden, the majority of which is flagged with raised flowerbeds and a timber storage shed. To the side of the property is a 2 car tandem driveway

HEATING: Gas fired hot water central heating system complemented by double glazed windows in a mixture of UPVC and wooden frames.

SERVICES: Mains water, electricity, gas and drainage are connected.

SERVICE CHARGE: There is an annual service charge payable to the management company which provides for the cleaning, gardening & maintenance of communal areas, window cleaning and buildings insurance. We are informed by the vendor that the charge is £1,148.28 per annum.

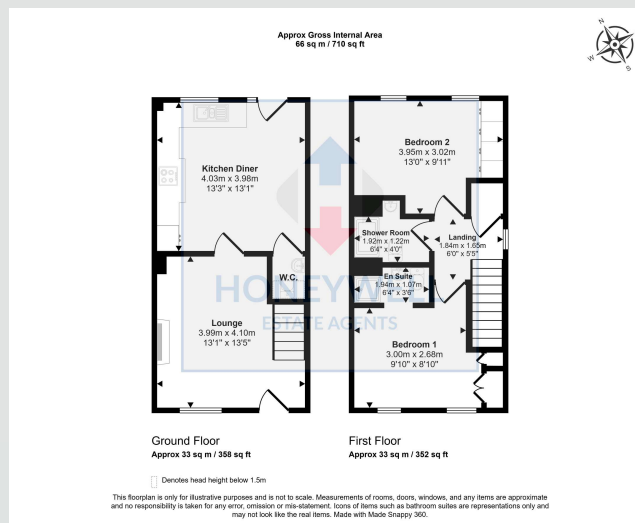
COUNCIL TAX BAND C.

VIEWING: By appointment with our office.



SELLING YOUR OWN HOUSE? We will be happy to provide free valuation and marketing advice, without obligation - please ask for details.





2 Candlemakers Croft, Clitheroe, BB7 1AB
MJ/CJ/020925

Selling Your House? We will be happy to provide free valuation and marketing advice, without obligation - please ask for details

1 Castlegate, Clitheroe. BB7 1AZ
T: 01200 426041 E: houses@honeywell.co.uk

HoneywellEstateAgents

HoneywellAgents



honeywell.co.uk

Please note: These particulars are produced in good faith, but are intended to be a general guide only and do not constitute any part of an offer or contract. No person in the employment of Honeywell Estate Agents Ltd has any authority to make any representation or warranty whatsoever in relation to the property. Photographs are reproduced for general information and do not imply that any item is included for sale with the property.