



Honeywell
SELECT

The Barn House, Newton-in-Bowland

Stunning stonebuilt detached house with views
£785,000



- Family dining kitchen
- Large 1st floor lounge
- 3 double bedrooms, 2 bathrooms
- Character features
- Private position in centre of village
- 232 m² (2,497 sq ft) approx. plus garage

honeywellselect.co.uk
Clitheroe 01200 426041



The Barn House Newton-in-Bowland

A spacious stonebuilt detached house sat in this private position in the heart of Newton-in-Bowland with lovely long distance rural views of the Hodder Valley. The property is finished to a high standard and offers beautiful character coupled with modern quality fittings.

The ground floor has a beautiful cosy snug with stone fireplace with open fire. There is a study to the front and a large family dining kitchen which offers a superb open-plan living space with bespoke solid wood kitchen, Aga and granite work surfaces with room for a dining table and seating. At the rear of the house is a boot room, utility and storerooms which also provide access to the garage. Upstairs there is a large landing or library area with pitched ceiling, feature exposed stonework and bookshelves, this leads to a huge first floor lounge with log burner and attractive views. Also, on the first floor there are three bedrooms including a master bedroom with 5-piece en-suite and two double bedrooms, along with a modern shower room.

Externally there is parking for 3-4 cars leading to the garage. There is a large south-east facing garden to the front with stone patio and lawn, while to the rear there is another patio and a lawned garden with boundary hedging. Viewing is essential.

LOCATION: Enter Newton-in-Bowland from the Clitheroe direction, proceed over the bridge and continue straight on up the hill. At the top T-junction turn right and immediately left and The Barn House is first on the left.

ACCOMMODATION: (imperial dimensions in brackets: all sizes are approximate):-

ENTRANCE: Through solid wood tongue and groove latched front door into:

SNUG: 4.5m x 4.4m (14'8" x 14'4"); with feature exposed stone wall, stunning stone fireplace and hearth housing open fire, wall light points, staircase off to first floor and travertine tiled floor.

STUDY: 2.2m x 2.7m (7'3" x 8'11"); with windows to front and side elevation and feature exposed stone wall.



HONEYWELL SELECT, SELLING PROPERTIES OF DISTINCTION

honeywellselect.co.uk
Clitheroe 01200 426041



Honeywell
SELECT

CLOAKROOM: 2-piece heritage style suite with high suite w.c. with pull chain flush, vanity wash-hand basin with chrome mixer taps set into a feature stone arch with vanity mirror and storage underneath, extractor fan and travertine tiled floor.

LARGE OPEN-PLAN LIVING DINING KITCHEN: 5.0m x 7.4m (16'5" x 24'2");

Seating area: With feature exposed stone wall, recessed spotlighting and half-glazed stable door leading to patio area, space for dining table and chairs.

Kitchen Area: Attractive solid wood bespoke fitted kitchen with grey shaker style wall and base units, black granite work surfaces and upstands with under unit lighting, 2 bowl porcelain Belfast sink unit with brushed steel mixer tap, electric AGA in aubergine (currently disconnected), integrated Neff electric fan oven and microwave combination oven, integrated fridge-freezer and dishwasher, controlled electric underfloor heating, recessed spotlighting, travertine tiled floor and outlooks across the front garden.

REAR HALLWAY: With travertine tiled floor and doorway to rear patio.

BOOT ROOM/CELLAR: 2.3m x 3.2m (7'7" x 10'5"); with sliding doors, fitted shelving and hanging.

UTILITY ROOM: 3.2m x 1.7m (10'7" x 5'7"); situated between the boot room and the garage with open useful storage, plumbing for a washing machine and space for a tumble dryer, access to a further store room and integral garage.

FIRST FLOOR: A spindle staircase leads to:

LARGE LANDING OR LIBRARY AREA: With feature pitched ceiling with exposed beams, exposed stonework and large windows to front and side elevation, fitted book shelving, spindles and balustrade. It would be possible to create a 4th Bedroom using part of this space if required.



HONEYWELL SELECT, SELLING PROPERTIES OF DISTINCTION

honeywellselect.co.uk
Clitheroe 01200 426041



Honeywell
SELECT



LIVING ROOM: 4.9m x 7.3m (16'2" x 23'9"); a large room with multi-fuel log burning stove set on raised stone plinth, windows overlooking the front garden with distant views towards the Hodder Valley, television point and recessed spotlighting.

BEDROOM ONE: 3.3m x 4.8m (10'10" x 15'11"); with 2 windows overlooking the rear garden, television point, recessed spotlighting and double doors to en-suite.

EN-SUITE: 5-piece suite comprising low suite w.c. with push button flush, double vanity wash-hand basin with chrome mixer taps and oak storage cupboards below, large walk-in shower with fixed glass side panel with thermostatic shower with fixed showerhead, separate handheld showerhead and tiled walls, and a raised freestanding bath with freestanding chrome shower tap fitment. Recessed spotlighting, tiled floor, tall chrome heated ladder style towel rail, recess with feature lighting and shelving for towels.

BEDROOM TWO: 3.2m x 4.0m (10'7" x 13'1"); with built-in wardrobes, coved cornicing and recessed spotlighting.

BEDROOM THREE: 3.8m x 3.9m (12'4" x 11'10"); with feature pitched ceiling with exposed roof timbers and wall-to-wall range of fitted wardrobes.

SHOWER ROOM: A smart, modern 3-piece suite comprising low suite w.c. with push button flush, vanity wash-hand basin with chrome tap, vanity mirror over and feature lighting, large walk-in shower with fixed glass panel and fitted thermostatic shower, part-tiled walls, tiled floor and tall chrome heated ladder style towel rail.

HONEYWELL SELECT, SELLING PROPERTIES OF DISTINCTION

honeywellselect.co.uk
Clitheroe 01200 426041



Honeywell
SELECT

OUTSIDE: The property has a parking area for 3-4 cars leading to the ATTACHED GARAGE measuring 5.0m x 3.8m (16'6" x 12'6") with double doors, windows to side, light, power, water tap and access through to utility room. A large arched wooden gate leads to the private lawned gardens to the front with surrounding beech hedge, large stone flagged patio and BBQ area. There is a small garden area to the side and a timber gate leading to the rear gardens. The rear gardens have a patio area and steps to a raised lawn, boundary hedging and timber greenhouse.

SERVICES: Mains electricity, water and drainage are connected.

HEATING: Oil fired hot water central heating system with hot water radiators to all rooms (except the Study). The Living Kitchen, Snug and En-suite Bathroom have electric underfloor heating.

TENURE: Freehold

EPC: The energy efficiency rating of the property is E. Council Tax Band B.



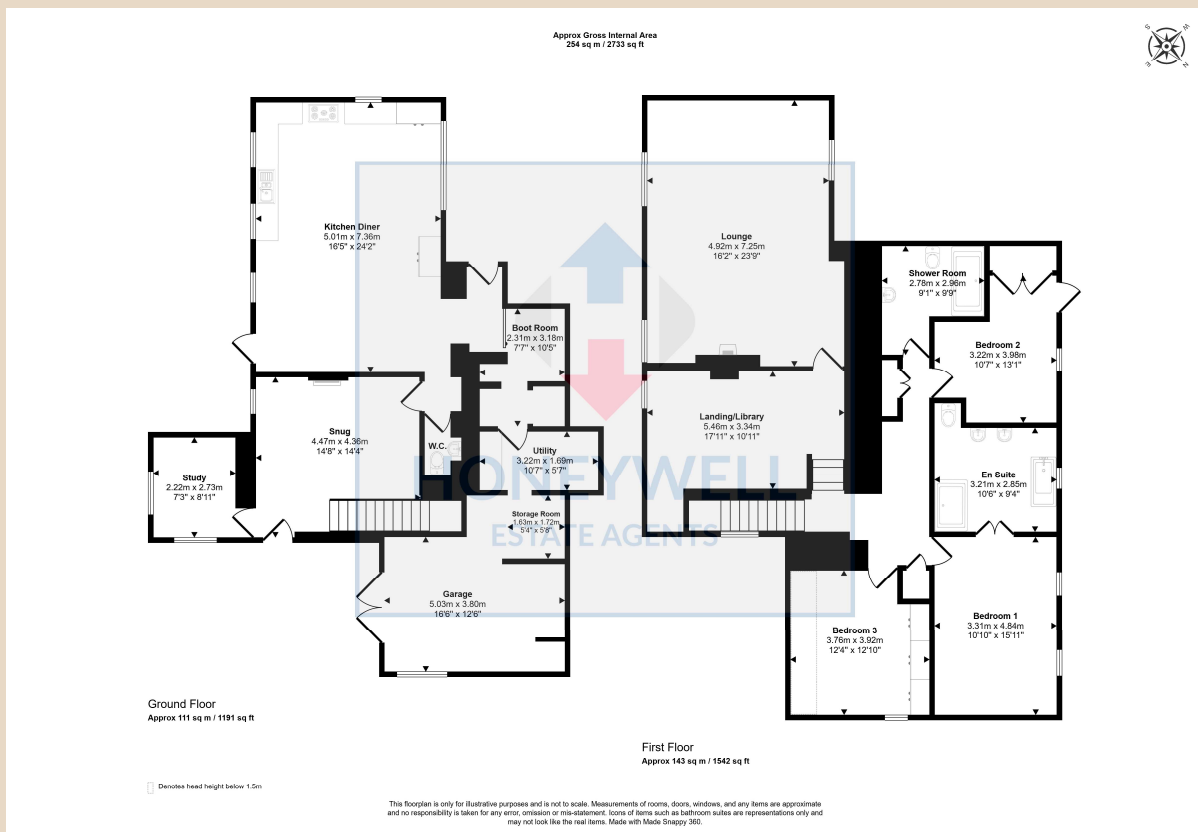
HONEYWELL SELECT, SELLING PROPERTIES OF DISTINCTION

honeywellselect.co.uk
Clitheroe 01200 426041



HONEYWELL SELECT, SELLING PROPERTIES OF DISTINCTION

honeywellselect.co.uk
Clitheroe 01200 426041



HONEYWELL SELECT, SELLING PROPERTIES OF DISTINCTION

honeywellselect.co.uk
 Clitheroe 01200 426041



Please note: These particulars are produced in good faith, but are intended to be a general guide only and do not constitute any part of an offer or contract. No person in the employment of Honeywell Estate Agents Ltd has any authority to make any representation or warranty whatsoever in relation to the property. Photographs are reproduced for general information and do not imply that any item is included for sale with the property.

*The Barn House, Newton-in-Bowland, BB7 3DZ
CD/CJ/120225*

HONEYWELL SELECT, SELLING PROPERTIES OF DISTINCTION

honeywellselect.co.uk
Clitheroe 01200 426041