



## 9c Jeune Street, Oxford, OX4 1BN

Location: Jeune Street, East Oxford  
Proximity: Close to Cowley Road and both universities

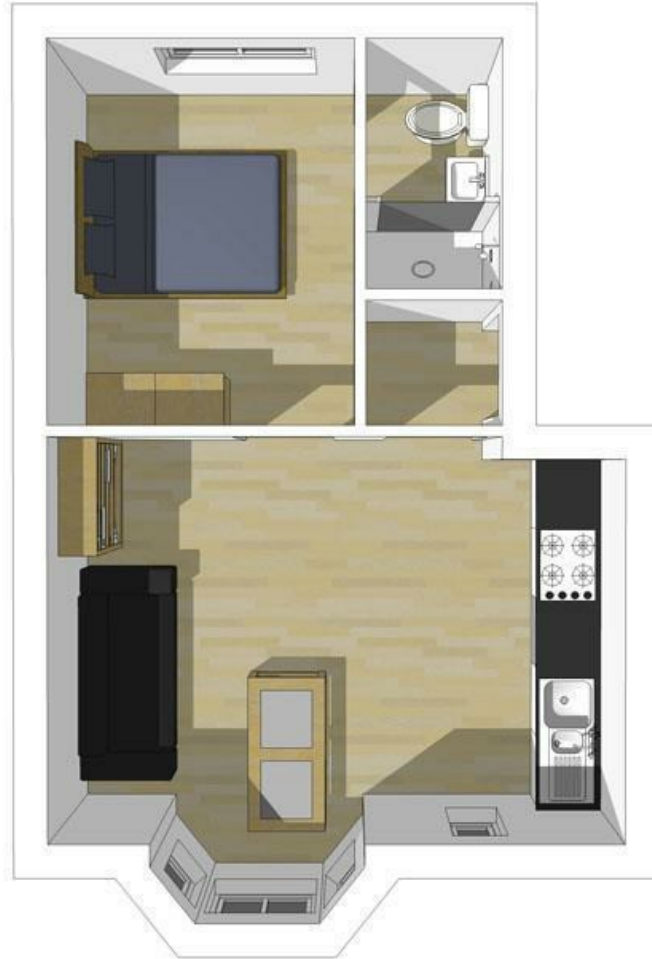
**Modern Building:** Only 16 years old, providing a contemporary living option in East Oxford.  
**Fully Furnished:** Well-designed kitchen/living area with modern furnishings in a bright and vibrant apartment.  
**Spacious Bedroom:** Equipped with a double bed, mattress, wardrobe, and drawers offering ample storage.  
**Ensuite Bathroom:** Complete with modern fittings, providing convenience and privacy.  
**Communal Garden:** Large, well-maintained garden at the rear of the property with a security gate.  
**Bike Storage:** Ample bike storage facilities available within the communal garden.  
**Quiet and Private:** Ideal for students or professionals looking for a peaceful space to work and live.

This modern apartment on Jeune Street in East Oxford is perfect for students or professionals seeking privacy and tranquility while staying close to Cowley Road and both universities. The building, just 16 years old, offers a contemporary alternative in the area, with a well-furnished kitchen/living area and a spacious bedroom with an ensuite. The large communal garden with a security gate provides a peaceful outdoor space and plenty of bike storage, making this property a convenient and quiet place to call home.

Managed by NOPS – the landlord is also the owner of NOPS.

- St. Clements
- Furnished Property
- Flat
- 1 Bedroom
- 1 Reception/Kitchen
- 1 Bathroom
- Bike Storage in large communal garden

**£1,495 PCM**



Energy Efficiency Rating			
	Current	Potential	
Very energy efficient - lower running costs			
(92 plus) A			
(81-91) B			
(69-80) C			
(55-68) D			
(39-54) E			
(21-38) F			
(1-20) G			
Not energy efficient - higher running costs			
		80	82
England & Wales		EU Directive 2002/91/EC	

Environmental Impact (CO <sub>2</sub> ) Rating			
	Current	Potential	
Very environmentally friendly - lower CO <sub>2</sub> emissions			
(92 plus) A			
(81-91) B			
(69-80) C			
(55-68) D			
(39-54) E			
(21-38) F			
(1-20) G			
Not environmentally friendly - higher CO <sub>2</sub> emissions			
		82	83
England & Wales		EU Directive 2002/91/EC	