



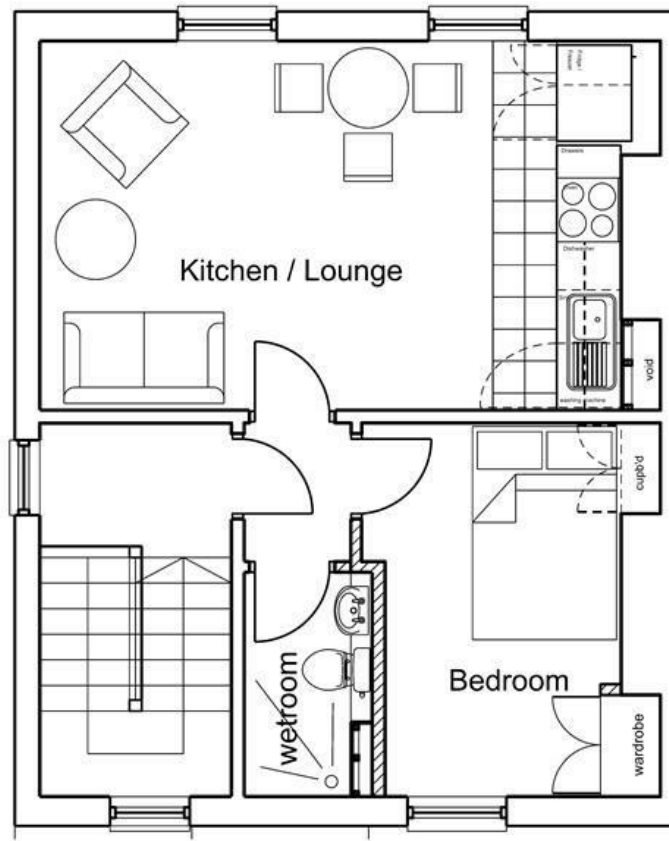
28 Walton Street - Flat 4, Jericho, Oxford, OX1 2HQ

TOP FLOOR APARTMENT

Bedrooms: 1
 Bathrooms: 1 (En-suite)
 Open Plan Layout: Large kitchen/diner/reception
 Furniture & Lighting: Contemporary design
 Flooring: High-quality, low-noise impact flooring throughout
 Kitchen Appliances: Siemens appliances (Slim line dishwasher, induction hob, combination oven/microwave)
 Decor: Neutral colors
 Electrical Outlets: Brushed stainless steel
 Bedroom Features: Double bedroom with luxury deep sprung damask fabric mattress
 Storage: Ample built-in cupboard space and wardrobes
 En-suite Bathroom: Design by award-winning Bathroom Company
 Shower: Fantastic monsoon shower
 Finish: High standard of finish throughout
 Fixtures & Fittings: Top of the range

- 1 Bedroom
- 1 Reception
- 1 Bathroom
- Jericho
- Furnished Property
- Flat
- Permit Parking Available

£1,750 PCM



Energy Efficiency Rating		
	Current	Potential
Very energy efficient - lower running costs		
(92 plus) A		
(81-91) B		
(69-80) C		
(55-68) D		
(39-54) E		
(21-38) F		
(1-20) G		
Not energy efficient - higher running costs		
	53	76
England & Wales	EU Directive 2002/91/EC	

Environmental Impact (CO ₂) Rating		
	Current	Potential
Very environmentally friendly - lower CO ₂ emissions		
(92 plus) A		
(81-91) B		
(69-80) C		
(55-68) D		
(39-54) E		
(21-38) F		
(1-20) G		
Not environmentally friendly - higher CO ₂ emissions		
	54	71
England & Wales	EU Directive 2002/91/EC	