



## 165A Kingston Road, Jericho, Oxford, OX2 6EG

Newly refurbished end-terrace house with 5 double bedrooms located in Jericho available September.

Each bedroom is fully furnished with double bed, mattress, wardrobe, drawers, desk and chair. Alongside this the ground floor offers a living area and kitchen which both lead into the back garden.

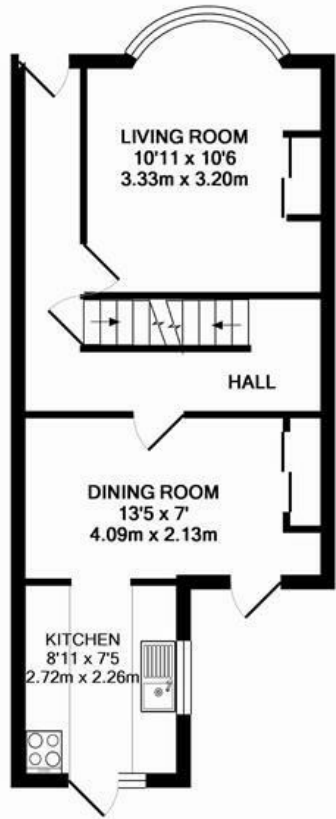
The kitchen is sleek and modern and leads to the back garden which is an ideal spot for summer afternoons.

The property comes with four bathrooms, two communal and two en suites helping this property offer all the benefits of sharing whilst still allowing privacy and independence when required.

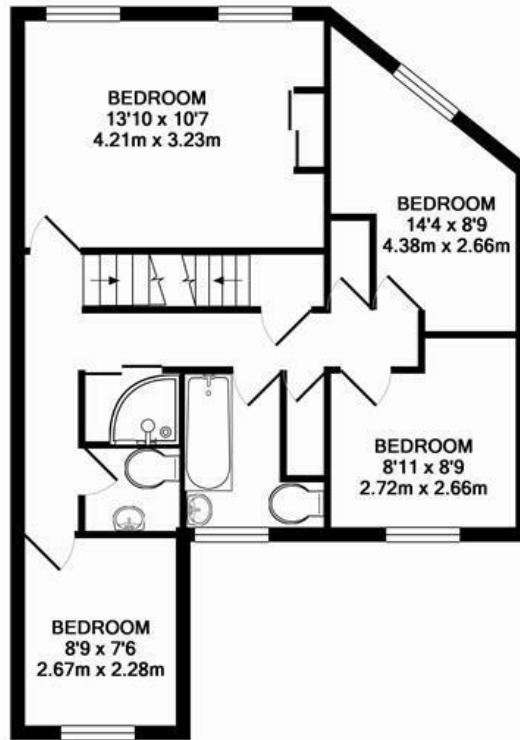
Parking is available whilst with the property and the location offers easy access to all that Jericho has to offer in terms of restaurants, bars and shops as well as Port Meadow and a short walk to the City Centre.

- Jericho
- 5 Bedrooms
- 2 bathrooms
- 2 en suites
- Small Garden
- Permit Parking Available

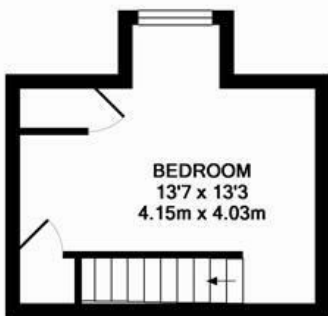
**£4,450**



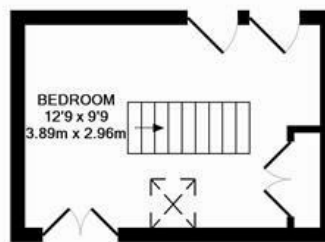
GROUND FLOOR  
APPROX. FLOOR  
AREA 397 SQ.FT.  
(36.9 SQ.M.)



1ST FLOOR  
APPROX. FLOOR  
AREA 559 SQ.FT.  
(52.0 SQ.M.)



BASEMENT LEVEL  
APPROX. FLOOR  
AREA 154 SQ.FT.  
(14.3 SQ.M.)



2ND FLOOR  
APPROX. FLOOR  
AREA 134 SQ.FT.  
(12.5 SQ.M.)

TOTAL APPROX. FLOOR AREA 1245 SQ.FT. (115.7 SQ.M.)

KeyAGENT LTD Floor Plans are produced and provided for illustration purposes only. Whilst every attempt has been made to ensure the plan is accurate and presents the property in the best way, measurements of doors, windows and rooms are approximate and no responsibility is taken for any error, omission or mis-statement. To find out more about KeyAGENT please visit [www.keyagent.co.uk](http://www.keyagent.co.uk)  
(Tel: 0845 475 4165)  
Made with Metropix ©2011

