



Guide £150,000
Liskeard

Jefferys ESTABLISHED 1865

38 Park View
Liskeard
Cornwall
PL14 3EF
Price Guide £150,000

A semi-detached three bedroom House in need of modernisation and improvement is for sale with no onward chain. The property benefits from modern double glazed windows and a spacious plot with some potential for the future. The property is offered for sale to cash buyers only due to spray foam insulation which could potentially be removed to make the property mortgageable.

This property is situated within the former market town of Liskeard. The property is situated a short distance from the town centre amenities and mainline railway station linking the town to Plymouth and London Paddington.

Liskeard is well placed for the popular south coastal resort of Looe only being some 8 miles away. Bodmin Moor being easily accessible for numerous pursuits and miles of outstanding scenery.

The property is located on the periphery of the town centre and provides tremendous scope for the future.

THE ACCOMMODATION COMPRISES WITH APPROXIMATE MEASUREMENTS:

Entrance Hall

uPVC double glazed door to the front, stairs leading to the first floor with stair lift.

Lounge

13'7" x 11'5" (4.17m x 3.52m)

uPVC double glazed window to the front, stone fireplace with living gas fire.

Side Hall

uPVC double glazed door to the side with large downstairs storage cupboard.

Cloakroom/wc

uPVC double glazed window to the rear, suite comprising low level wc, wash hand basin.

Kitchen

11'7" x 9'8" (3.54m x 2.97m)

uPVC double glazed window to the rear, kitchen units comprising wall cupboards and working surfaces with cupboards, drawers and space under, space for dishwasher and washing machine, stainless steel sink unit.

First Floor

Landing

uPVC double glazed window to the side.

Bedroom

9'1" x 8'3" (2.76m x 2.55m)

uPVC double glazed window to the rear, gas heater.

Bedroom

11'7" x 8'4" (3.58m x 2.56m)

uPVC double glazed window to the rear, gas heater.

Bedroom

9'8" x 9'6" (2.98m x 2.94m)

uPVC double glazed window to the front, decorative cast iron fireplace.

Wet Room/wc

uPVC double glazed window to the front, suite comprising low level wc, wash hand basin, shower with modern Mira electric shower fitted, partly tiled walls, altro flooring, airing cupboard with copper hot water cylinder and electric immersion heater.

OUTSIDE

Concrete driveway to the front with parking for three vehicles.



A path then leads to the front garden and front of the property with low maintenance gravelled garden. Lawn garden to the side with potential for extension or possible infill building plot subject to planning. Gravel and concrete area to the rear.

SERVICES

All mains services are connected to the property. Gas fired heaters to the Lounge and some first floor bedrooms.

Good Mobile Coverage and Fibre Broadband.

TENURE

The property is being sold Freehold with vacant possession upon completion.

COUNCIL TAX

Band 'B'

EPC

Band 'F'

MINING AND RADON

The property is in Cornwall, a county known for mining activity, and potentially high levels of Radon gas.

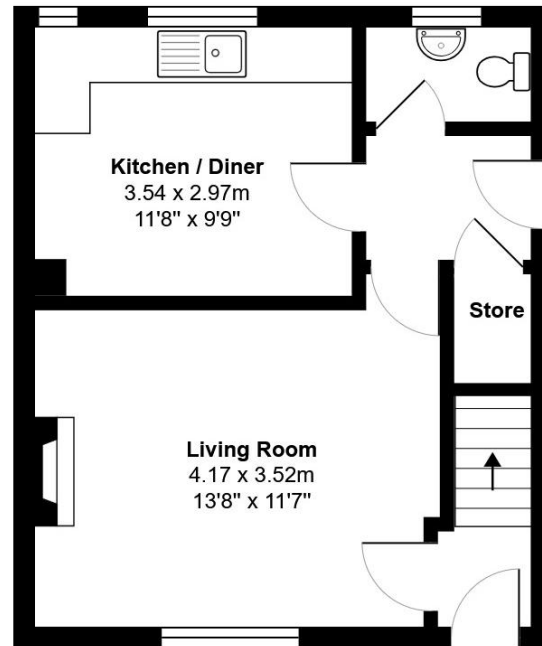
VIEWING

Strictly by prior appointment with the vendors agents – Jefferys - Tel: 01579-342400

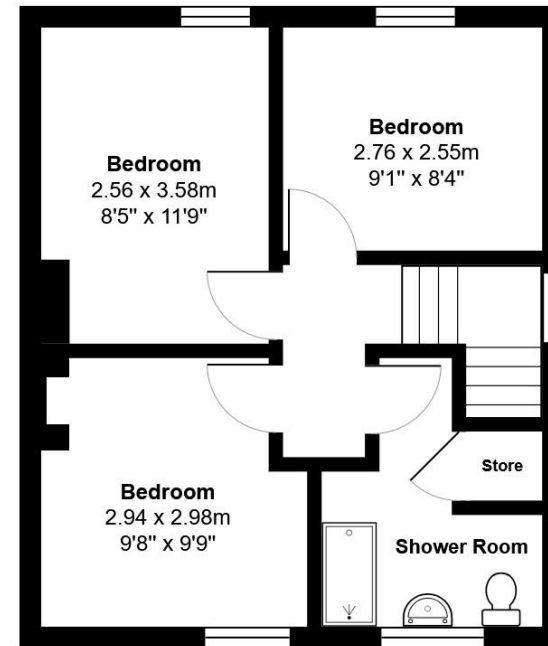
AGENTS NOTE

Please note, the property has spray foam insulation within the rafters. Most lenders would be reluctant to lend on the property until the spray foam has been correctly removed.





Ground Floor



First Floor

38, Park View, Liskeard, PL14 3EF

Total Area: 69.3 m² ... 746 ft²

All measurements are approximate and for display purposes only



rightmove
find your happy



St Austell

18 Duke St, St Austell
PL25 5PH
01726 73483
staustell@jefferys.uk.com

Lostwithiel

5 Fore St, Lostwithiel
PL22 0BP
01208 872245
lostwithiel@jefferys.uk.com

Liskeard

17 Dean St, Liskeard
PL14 4AB
01579 342400
liskeard@jefferys.uk.com

OFFICES AT: ST. AUSTELL • LOSTWITHIEL • LISKEARD

www.jefferys.uk.com

ESTABLISHED 1865
Jefferys

CONSUMER PROTECTION FROM UNFAIR TRADING REGULATIONS 2008: The Agent has not tested any apparatus, equipment, fixtures and fittings or services and so cannot verify that they are in working order or fit for the purpose. A Buyer is advised to obtain verification from their Solicitor or Surveyor. References to the Tenure of a Property are based on information supplied by the Seller. The Agent has not had sight of the title documents. A Buyer is advised to obtain verification from their Solicitor. Items shown in photographs are not included unless specifically mentioned within the sales particulars. They may however be available by separate negotiation. Buyers must check the availability of any property and make an appointment to view before embarking on any journey to see a property. IN ACCORDANCE WITH GDPR (GENERAL DATA PROTECTION REGULATION) Please note that all personal information provided by customers wishing to receive information and/or services from the estate agent and the "Property Sharing Experts" of which Jefferys is a member for the purpose of providing services associated with the business of an estate agent but specifically excluding mailings or promotions by a third party. If you do not wish your personal information to be used for any of these purposes, please notify your estate agent.