



LAND AT TREWEESE QUETHIOCK

**13.05 ACRES OF PASTURE/ARABLE LAND WITH A SECTION
OF WOODLAND
FOR SALE BY PRIVATE TREATY**

GUIDE PRICE: £130,000

www.jefferys.uk.com

OFFICES AT ST AUSTELL • LOSTWITHIE



RICS rightmove
find your happy



Land at Treweese Quethiock PL14 3SG

GUIDE PRICE: £130,000.

The property comprises approximately 13.05 acres (5.28ha) of agricultural land. Most of the land is gently sloping in a southerly direction with a section of woodland on the steeper section of land to the west. The woodland amounts to approximately 1.7 acres.

The land is currently in temporary pasture but has been in crop rotation with maize being grown last year.

There is good access to the land off the public highway via a small section privately owned track shown coloured yellow.

No mains supplies are connected although there are overhead power lines and a natural water supply available to the west.

LOCATION

The land is positioned on the outskirts Quethiock located at Treweese.

ENTITLEMENTS / BASIC PAYMENT SCHEME (BPS)

The Entitlements are not part of the sale.

SERVICES

No enquiries have been made by the selling agents. Purchasers should make their own enquiries with the utility companies about any service connections.

TENURE

The land is freehold and will be offered with vacant possession upon completion.

WAYLEAVES/EASEMENTS

The property is offered subject to, or with the benefit of all wayleaves, easements, quasi easements, rights of way, covenants and restrictions whether mentioned in these particulars or not.

PLAN

The Ordnance Extract shown on these particulars is believed to be correct. However, it is not to scale and is to be used for identification purposes only. The land is shown edged red

on the attached plan.

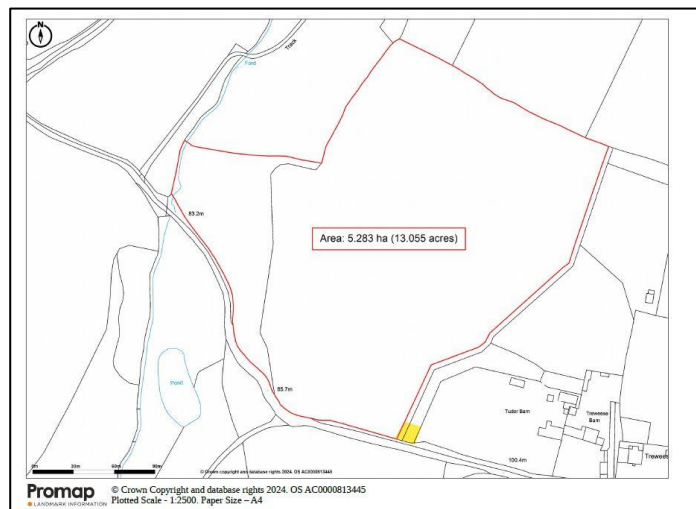
VIEWING

Strictly by prior appointment with the vendors agents – tel: 01579-342400

DIRECTIONS

From St Ive heading towards Callington take the first right turning signed Quethiock. Proceed along this road for approximately 1 mile and take the turn to the right signed Treweese. The land will be found on your right hand side approximately 200 yards down the hill.

WHAT3WORDS – Steam, Passenger, Fumes



St Austell

18 Duke St, St Austell
PL25 5PH
01726 73483
staustell@jefferys.uk.com

Lostwithiel

5 Fore St, Lostwithiel
PL22 0BP
01208 872245
lostwithiel@jefferys.uk.com

Liskeard

17 Dean St, Liskeard
PL14 4AB
01579 342400
liskeard@jefferys.uk.com

ESTABLISHED 1865
Jefferys