



Imperial Road, Knowle

£560,000

- **Energy Rating - C**
- **En-Suite Master Bedroom**
- **Kitchen / Breakfast Room**
- **Conservatory**
- **Extensive Views**

- **Extended - Three Double Bedrooms**
- **Utility & Ground Floor Cloakroom**
- **Separate Dining Room**
- **Large Family Bathroom**
- **Driveway & Garage**

Nestled on the sought-after Imperial Road just off West Town Lane, this impressive semi-detached family residence offers an exceptional living experience. This substantial property has been thoughtfully extended to accommodate modern family life.

Upon entry, a welcoming porch leads to a spacious garage and a convenient storeroom. Stepping into the main house, you're greeted by an elegant entrance hallway featuring an ornate stained glass door and surround. The ground floor boasts a well-appointed bay fronted lounge with a log burner, a separate formal dining room with a gas fire, a spacious kitchen/breakfast room, a utility room, and a convenient downstairs cloakroom. The delightful conservatory, accessible from both the kitchen and dining area via French doors, provides a tranquil retreat overlooking the charming rear garden.

Ascending to the first floor, you'll discover three generously proportioned double bedrooms along with a landing big enough to be used as a home office. The spacious master bedroom features a modern en-suite. The light and airy second bedroom is bay-fronted and has a decorative period fireplace. The 13-ft third bedroom, also containing a decorative period fireplace, boasts extensive views. The larger than life well equipped family bathroom, complete with a walk in a shower and a freestanding bath still with space to spare, is ideal for every need.

This home is equipped with a range of modern comforts including UPVC double glazing and gas central heating from a combination boiler. Outside, a gated driveway provides off-street parking, while the enchanting rear garden provides a picturesque setting perfect for outdoor entertaining and relaxation, and allowing convenient side access.

Combining period charm with contemporary living, this property offers a rare opportunity to secure a truly remarkable family home in a highly desirable location.

Lounge 15'5" into bay x 12'10" into recess (4.70 into bay x 3.93 into recess)

Dining Room 13'5" x 11'1" into recess (4.09 x 3.39 into recess)

Kitchen/Breakfast Room 17'1" x 11'8" both at max (l shaped) (5.22 x 3.57 both at max (l shaped))

Conservatory 20'0" x 6'7" (6.10 x 2.01)

Utility 6'2" x 4'5" (1.88 x 1.36)

Ground Floor Cloakroom 2'8" x 2'7" (0.83 x 0.80)

Bedroom One 13'6" x 12'5" both at max (l shaped) (4.13 x 3.79 both at max (l shaped))

En-Suite 6'10" x 2'7" (2.10 x 0.79)

Bedroom Two 15'7" into bay x 11'6" into recess (4.77 into bay x 3.51 into recess)

Bedroom Three 13'5" x 11'1" into recess (4.09 x 3.40 into recess)

Bathroom 16'11" x 11'8" both at max (l shaped) (5.18 x 3.57 both at max (l shaped))

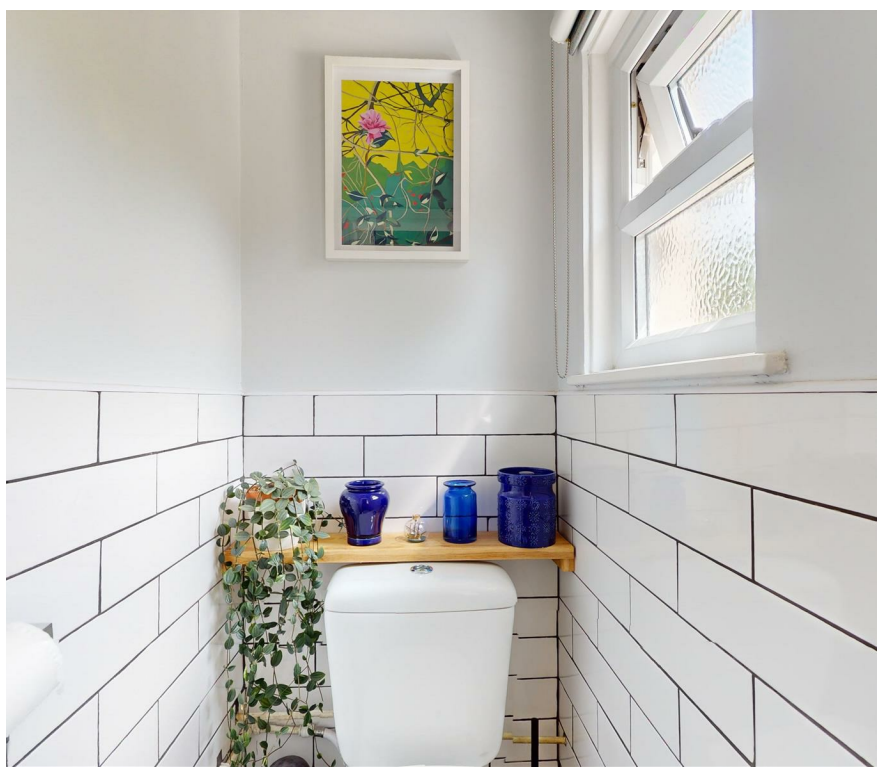
Tenure - Freehold

Council Tax Band - D

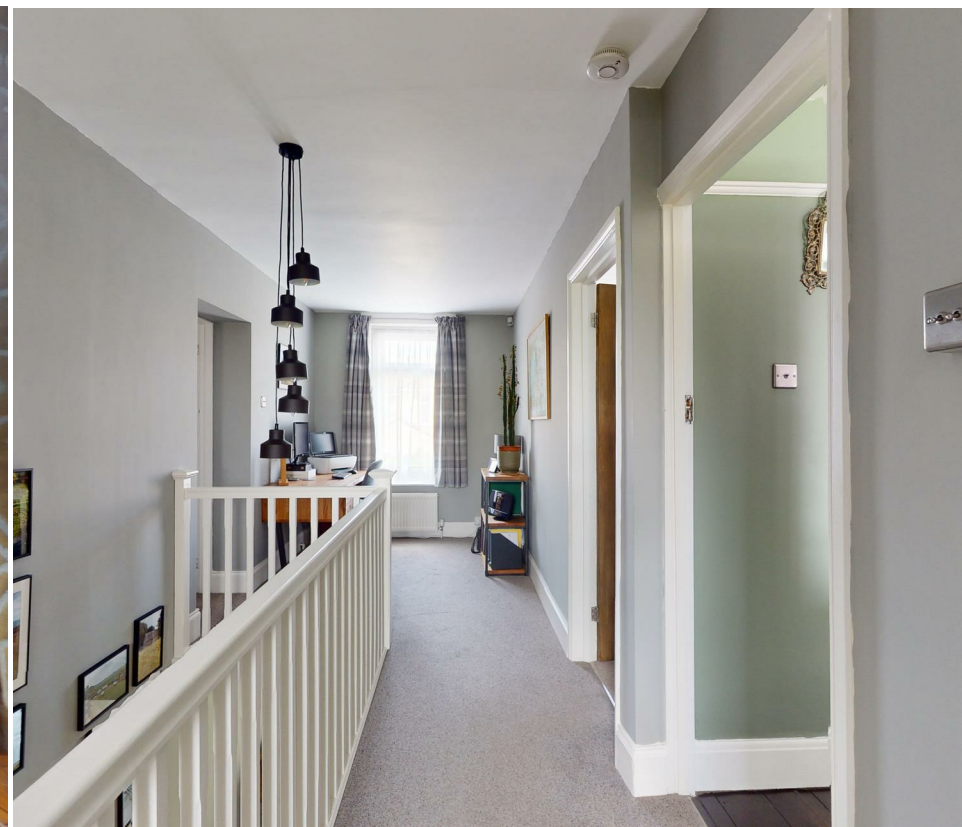


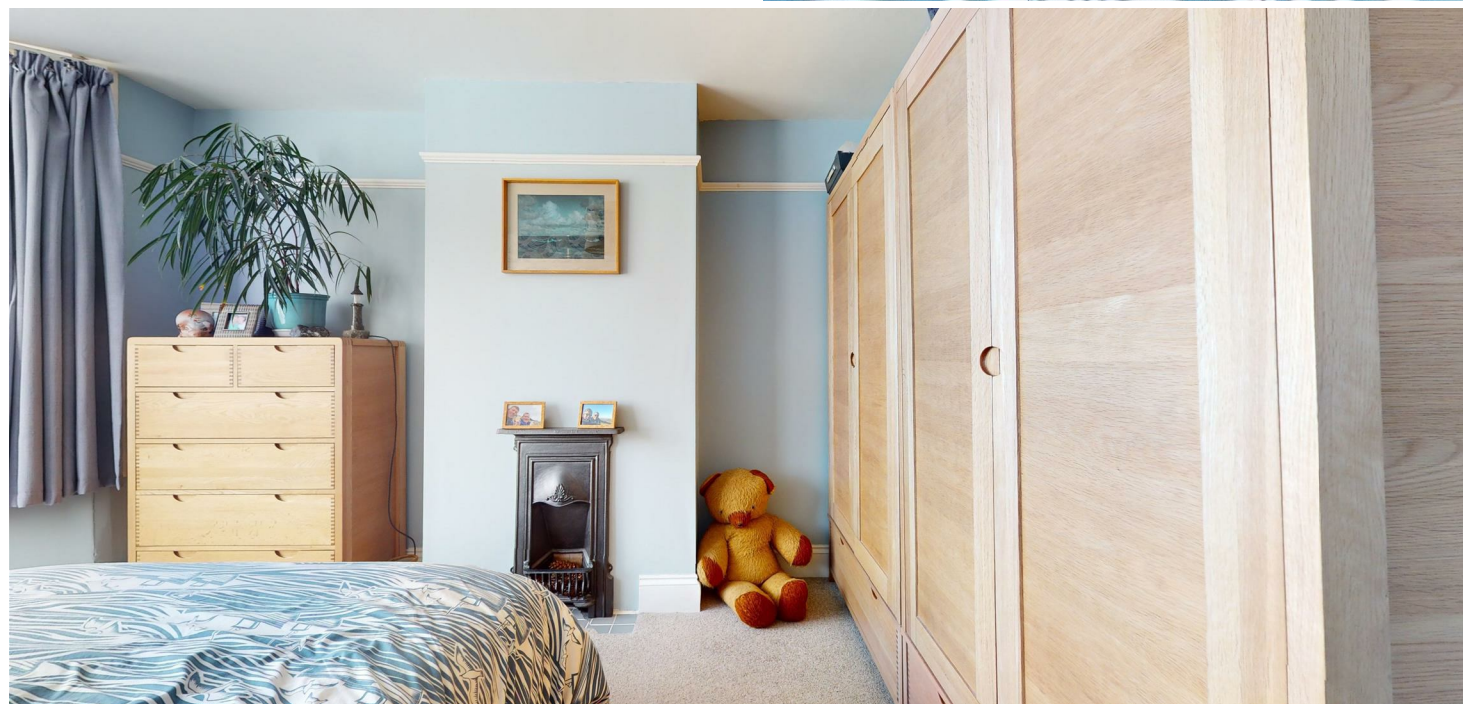




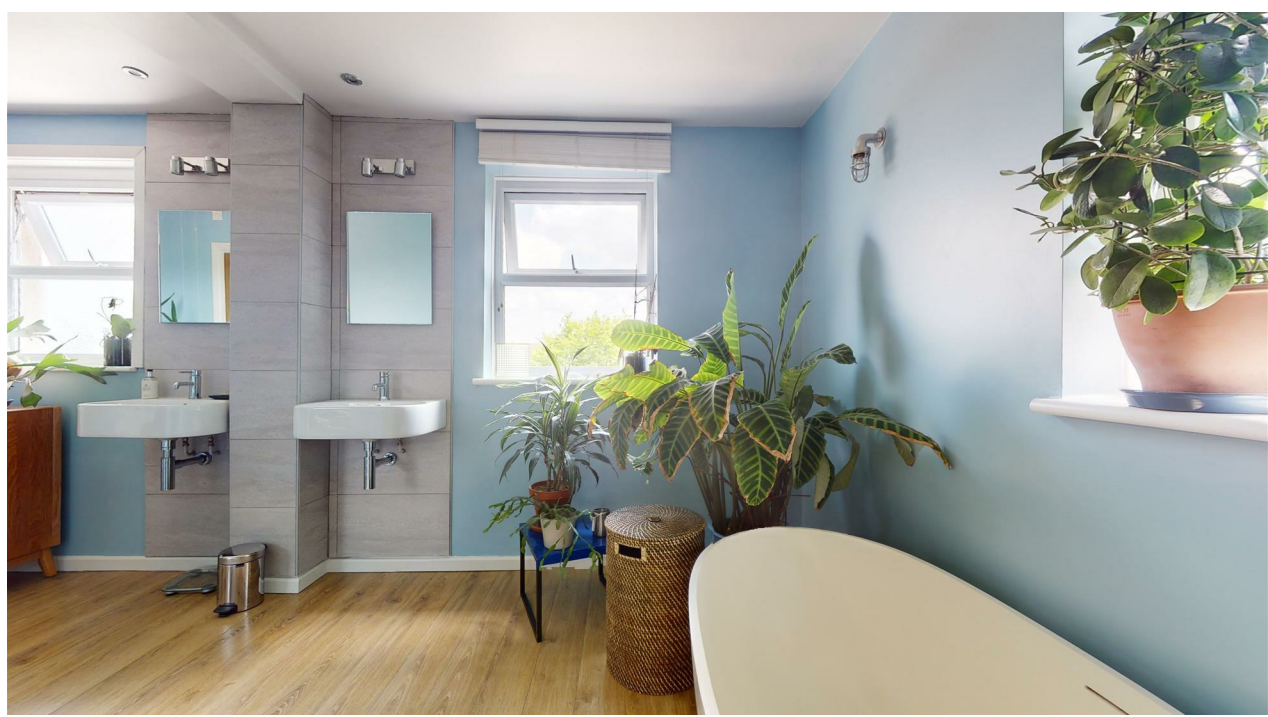






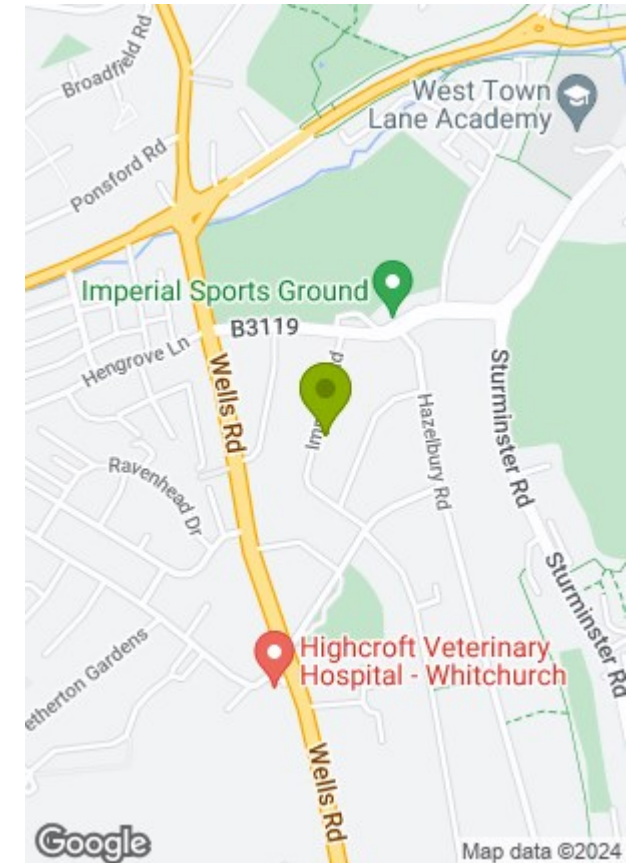




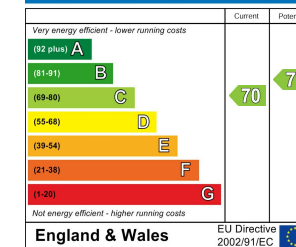




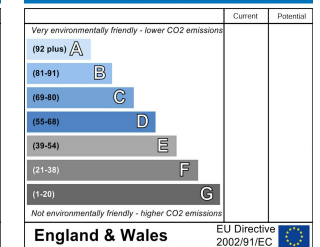
© Greenwoods Property Centre 2024



Energy Efficiency Rating



Environmental Impact (CO₂) Rating



These particulars, whilst believed to be accurate are set out as a general outline only for guidance and do not constitute any part of an offer or contract. Intending purchasers should not rely on them as statements of representation of fact, but must satisfy themselves by inspection or otherwise as to their accuracy. No person in this firm's employment has the authority to make or give any representation or warranty in respect of the property.