



16 Rugby Road, Bristol , Somerset BS4

£1,500 Per Month

- Three double bedrooms house
- Downstairs bathroom
- Lovely garden
- Council Tax B
- Security deposit £1730
- Modern kitchen with white goods included
- Separate toilet
- EPC D
- Ideal for a professional couple or a family
- Holding deposit £346

Nestled in the vibrant area of Brislington, Bristol, this charming three-bedroom terrace house offers a delightful blend of character and modern living.

Upon entering, you are greeted by a welcoming entrance hall that leads to a spacious sitting room.

The dining room flows seamlessly into a modern kitchen, which is equipped with all necessary appliances.

You will then find a separate toilet and a bathroom with shower over the bath.

Upstairs, the accommodation comprises a master bedroom providing ample space and natural light and a second double bedroom.

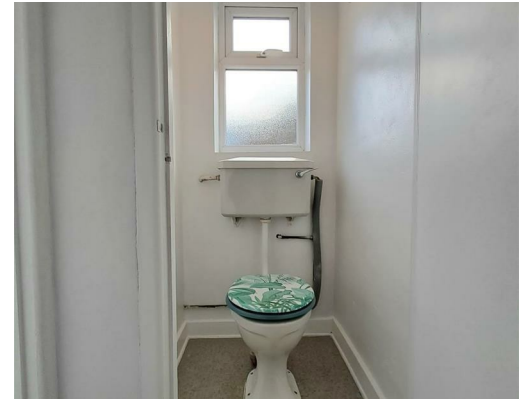
A further third bedroom offers versatility for a home office a third bedroom.

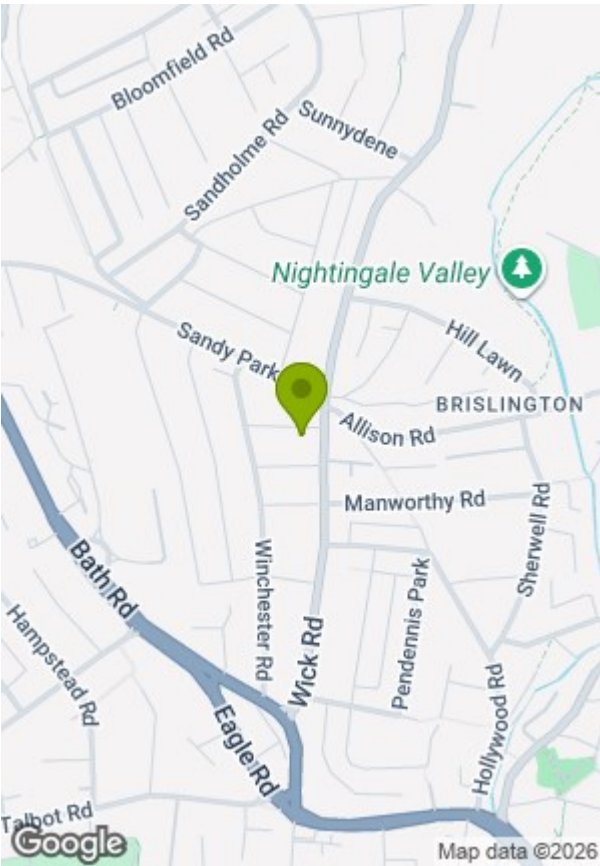
Outside, the property offers a low-maintenance garden.

Situated within walking distance to Sandy park Road amenities, including local shops, cafes, as well as being conveniently close to central Bristol and Temple Meads Train Station, this home is perfectly positioned for both convenience and lifestyle.

Available now.







Energy Efficiency Rating			Environmental Impact (CO ₂) Rating		
	Current	Potential		Current	Potential
Very energy efficient - lower running costs			Very environmentally friendly - lower CO ₂ emissions		
(92 plus) A		84	(92 plus) A		
(81-91) B			(81-91) B		
(69-80) C			(69-80) C		
(55-68) D	66		(55-68) D		
(39-54) E			(39-54) E		
(21-38) F			(21-38) F		
(1-20) G			(1-20) G		
Not energy efficient - higher running costs			Not environmentally friendly - higher CO ₂ emissions		
England & Wales	EU Directive 2002/91/EC		England & Wales	EU Directive 2002/91/EC	

These particulars, whilst believed to be accurate are set out as a general outline only for guidance and do not constitute any part of an offer or contract. Intending purchasers should not rely on them as statements of representation of fact, but must satisfy themselves by inspection or otherwise as to their accuracy. No person in this firms employment has the authority to make or give any representation or warranty in respect of the property.