



New Fosseway Road, Whitchurch

£280,000

- Energy Rating - D
- Lounge
- Two Double Bedrooms
- Off Street Parking
- Upvc Double Glazing

- Terraced House
- Kitchen / Diner
- First Floor Bathroom
- Gas Central Heating
- Good Size Rear Garden

This charming 1930s-style two-bedroom home is ideally located on New Fosseway Road in Whitchurch, making it a fantastic choice for first-time buyers. Conveniently positioned close to local schools, a range of amenities, and excellent bus routes, the property offers both comfort and practicality.

The ground floor accommodation features a bright and airy lounge, as well as a generous 15ft kitchen/dining room - perfect for entertaining or family mealtimes. French doors open onto a fully enclosed rear garden, which is laid to lawn with a decked seating area, ideal for enjoying the warmer months.

Upstairs, you'll find two double bedrooms and a modern bathroom complete with a shower over the bath.

Additional benefits include a driveway providing off-street parking, uPVC double glazing, and gas central heating powered by a combination boiler.

Living Room 13'1" x 11'5" (4 x 3.5)

Kitchen/Diner 16'4" x 12'5" (5 x 3.8)

Bedroom One 13'1" x 11'5" (4 x 3.5)

Bedroom Two 10'5" x 9'10" (3.2 x 3)

Bathroom 5'10" x 5'10" (1.8 x 1.8)

Tenure Status - Freehold

Council Tax - Band B





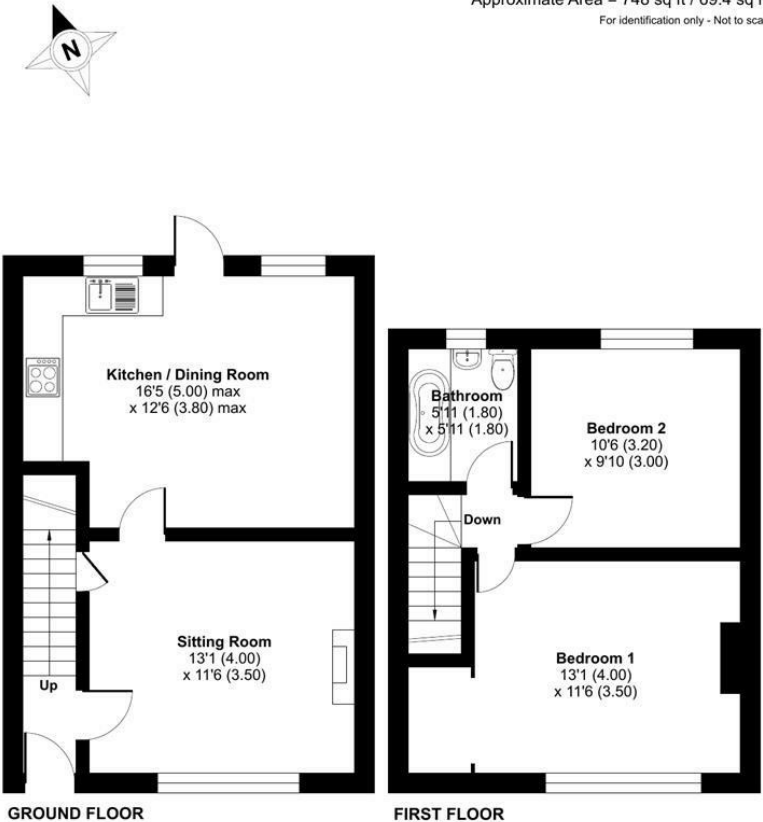






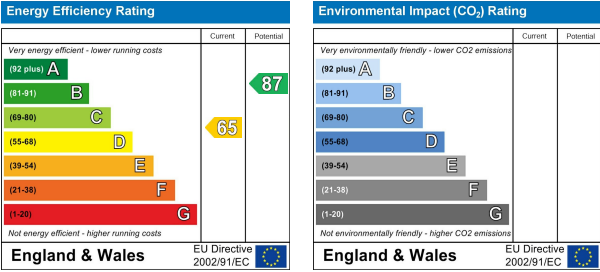
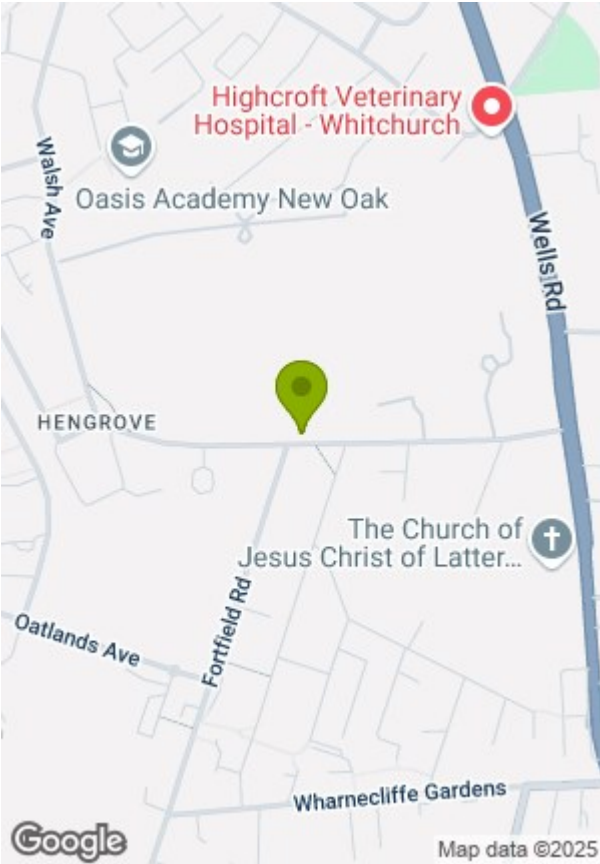
New Fosseway Road, Bristol, BS14

Approximate Area = 748 sq ft / 69.4 sq m  
For identification only - Not to scale



Floor plan produced in accordance with RICS Property Measurement 2nd Edition, Incorporating International Property Measurement Standards (IPMS2 Residential). Produced for Greenwood's Property Centre. REF: 1281779

© nlshecom 2025. GREENWOODS SALES • LETTINGS • COMMERCIAL



These particulars, whilst believed to be accurate are set out as a general outline only for guidance and do not constitute any part of an offer or contract. Intending purchasers should not rely on them as statements of representation of fact, but must satisfy themselves by inspection or otherwise as to their accuracy. No person in this firms employment has the authority to make or give any representation or warranty in respect of the property.