



Lampton Avenue, Hartcliffe

£275,000

- Energy Rating - C
- Double Driveway
- Kitchen/Diner
- Modern Shower Suite
- Three Bedroom Home
- Rear Garden
- Separate Living Room
- Entrance Porch

This delightful terraced house on Lampton Avenue offers a wonderful opportunity for families and first-time buyers alike. With three well-proportioned bedrooms, this property provides ample space for comfortable living.

You are welcomed into the property via the porch to the tiled hallway. To the left is the living room, an ideal space to relax and unwind. Flowing through to the back of the property we find a generous space designed to be used as a kitchen diner, built with plenty of worktop space and storage units throughout. The patio door allows you out onto the low maintenance rear garden which boasts further storage spaces.

Upstairs are three well proportioned rooms, two of which being generous doubles. The shower room boasts a modern white three piece suite.

Completing the property is a driveway large enough for two cars, a terrific bonus to a property that's ready to find it's next owners.

Living Room/Reception Room 12'10" x 11'8" (3.91m x 3.56m)

Kitchen/Diner 18'1" x 9'4" (5.51m x 2.84m)

Bedroom One 13'10 x 12'10 (4.22m x 3.91m)

Bedroom Two 13'10" x 9'4" (4.22m x 2.87m)

Bedroom Three 9'3" x 8'9" (2.83m x 2.67m)

Hallway 12'10 x 6' (3.91m x 1.83m)

Showerroom

Tenure - Freehold

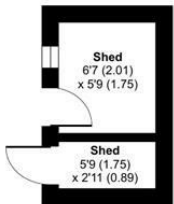
Council Tax Band - B



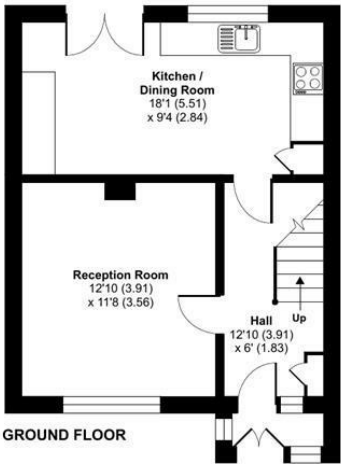


Lampton Avenue, Bristol, BS13

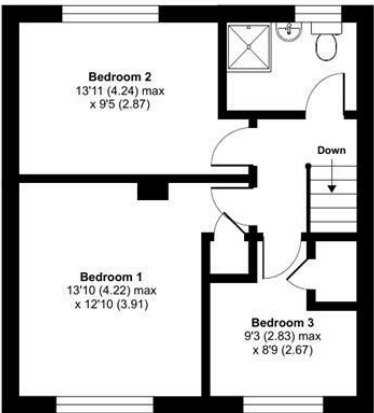
Approximate Area = 883 sq ft / 82 sq m
Outbuilding = 58 sq ft / 5.4 sq m
Total = 941 sq ft / 87.4 sq m
For identification only - Not to scale




OUTBUILDING

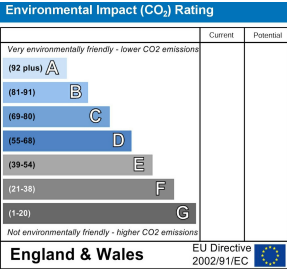
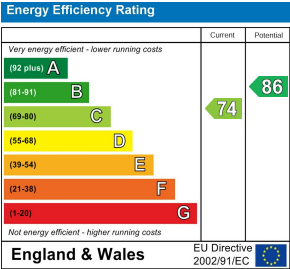
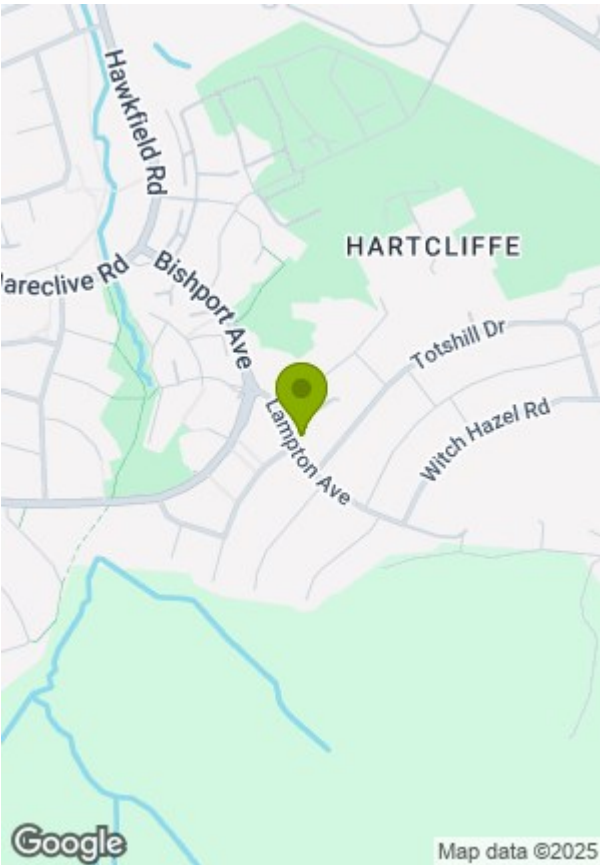


GROUND FLOOR



FIRST FLOOR

 Floor plan produced in accordance with RICS Property Measurement 2nd Edition, Incorporating International Property Measurement Standards (IPMS2 Residential). © nrichcom 2025. Produced for Greenwood's Property Centre. REF: 1261011



These particulars, whilst believed to be accurate are set out as a general outline only for guidance and do not constitute any part of an offer or contract. Intending purchasers should not rely on them as statements of representation of fact, but must satisfy themselves by inspection or otherwise as to their accuracy. No person in this firms employment has the authority to make or give any representation or warranty in respect of the property.